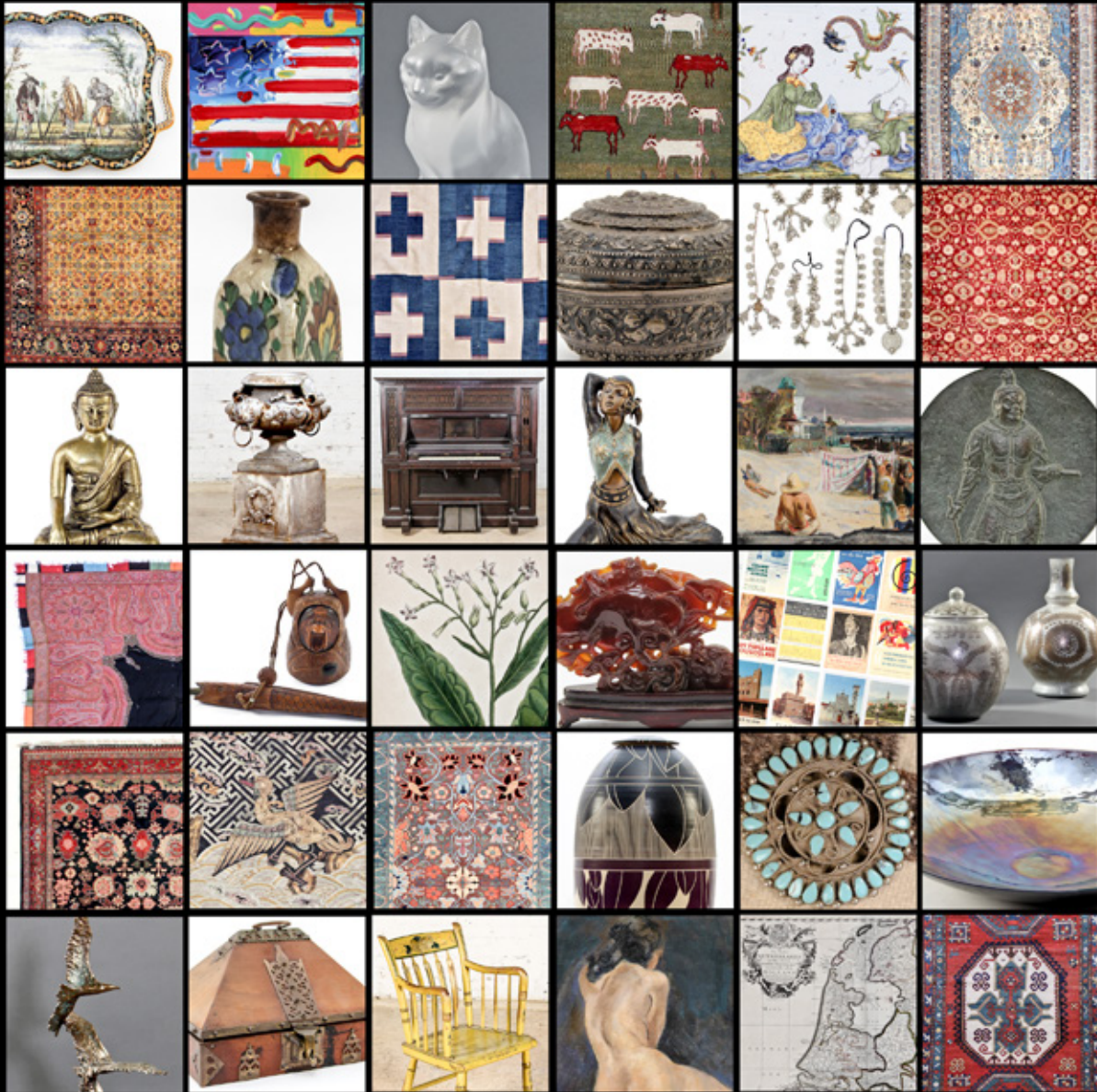


material culture



AUCTION

March 30, 2013 | 11AM

EXHIBITION

March 27 - 29 | 10AM-6PM Daily



1



2



3



4



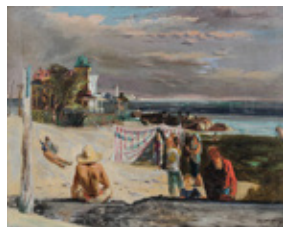
5



6



7



8



9

1. The Dutch Netherlands or the Seven United Provinces commonly called Holland, John Senex, circa 1721. Medium: Hand Colored Engraving. Size: 29" x 32.5" (73 x 82 cm) (frame); 18.75" x 22" (47 x 55 cm) (sight). Provenance: GlaxoSmithKline LLC. **\$200-300**

2. Elizabeth Blackwell (British/American, 1821-1910), Botanical: Tobacco A Curious Herbal, Vol I, Plate 146, 19th c. Medium: Handcolored engraving. Size: 19.5" x 15.25" (49 x 38 cm). Blackwell was the first woman to receive a medical degree in the United States, as well as the first woman on the UK Medical Register. Provenance: GlaxoSmithKline LLC. **\$60-80**

3. Elizabeth Blackwell (British/American, 1821-1910), Botanical: Wild Valerian, Vol II, Plate 271. Medium: Handcolored engraving. Size: 19.5" x 15.25" (49 x 38 cm). Provenance: GlaxoSmithKline LLC. **\$60-80**

4. Elizabeth Blackwell (British/American, 1821-1910), Botanical: Nux Vomica of the Shops, A Curious Herbal, Vol II, Plate 395. Medium: Handcolored engraving. Size: 19.5" x 15.25" (49 x 38 cm). Provenance: GlaxoSmithKline LLC. **\$60-80**

5. Elizabeth Blackwell (British/American, 1821-1910), Botanical: White Poppy - A Curious Herbal, Vol II, Plate 483. Medium: Handcolored engraving. Size: 19.5" x 15.25" (49 x 38 cm). Provenance: GlaxoSmithKline LLC. **\$60-80**

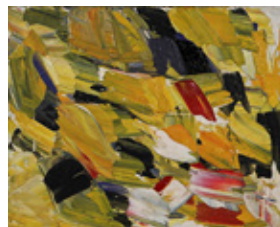
6. Elizabeth Blackwell (British/American, 1821-1910), Botanical: The Common Aloes-A Curious Herbal, Vol I, Plate 229, 19th c. Medium: Handcolored engraving. Size: 19.5" x 15.25" (49 x 38 cm). Provenance: GlaxoSmithKline LLC. **\$60-80**

7. A Pair of Framed Restrike Engravings including: 1) Prospectus Palatii Comitum Pathiani, engraving on wove paper. Size: 16.25" x 20.25" (41 x 51 cm); 2) Templum Parochiale St. Michael's, engraving on wove paper. Size: 16.25" x 20.25" (41 x 51 cm). Provenance: GlaxoSmithKline LLC. **\$100-200**

8. Walter Stuempfig (American, 1914-1970), Cape May Point, oil on canvas, signed. Size: 36" x 46" (91 x 116 cm) (stretcher), 42" x 52.5" (106 x 133 cm) (frame). Condition: Relined, minor inpainting. Provenance: a private Philadelphia, PA collection. **\$5000-7000**

9. Peter Max (American, b.1937), Pop Art American Flag, mixed media - acrylic paint over print, circa 2002, signed with dedication on back of frame. Size: 11.5" x 15.5" (29 x 39 cm) (sight), 25" x 29" (63 x 73 cm) (frame). Provenance: a private Philadelphia, PA collection. **\$1000-2000**

10. Sanford Greenberg (American, 20th century), Composition in Yellow, 1948, an abstract mid-century oil painting on canvas, signed, framed. Size: 24" x 30" (60 x 76 cm) stretcher, 30.5" x 24.5" (77 x 62 cm) frame. Condition: repairs, cracking. **\$200-400**



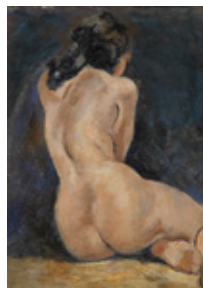
10

11. Francis Wharton Stork (American, 1912-2001), oil on board, abstract figurative painting, signed, framed. Size: 30" x 24" (76 x 60 cm) board, 31.5" x 25" (80 x 63 cm) frame. **\$200-400**



11

12. Laura Marie Greenwood (American, 1897-1951), oil on canvas board depicting a nude female figure, signed in pencil on back, framed. Size: 12" x 9" (30 x 22 cm) board, 17.5" x 14" (44 x 35 cm) frame. **\$200-300**



12

13. Alain Rousseau (French/American b. 1926), oil on linen canvas depicting an impressionist beach scene, signed, framed. Size: 18" x 21.75" (45 x 55 cm) stretcher, 24.5" x 28" (62 x 71 cm) frame. **\$600-800**



13

14. The City of Philadelphia, Birds Eye View, Currier & Ives, NY, lithograph in colors, under glass in a wood frame. Size: 22.5" x 33" (57 x 83 cm) sight, 31.5" x 41.5" (80 x 105 cm) frame. **\$100-200**



14

15. Manning DeVilleneuve Lee, (1894-1980), ink and gouache illustration art depicting a fictionalized Revolutionary War battle scene, signed, under glass in a wood frame. Size: 19" x 11.75" (48 x 29 cm) sight; 28.25" x 20.5" (71 x 50 cm) frame. **\$400-600**



15

16. N. Green (American School, 20th Century), Oil painting on board depicting a waterfront scene with boats, mid-century, signed, framed. Size: 14" x 15" (35 x 38 cm) board, 17.25" x 18.5" (43 x 46 cm) frame. **\$100-200**



16

17. Cesare A. Ricciardi (American/Italian, 1892-1973), Landscape painting depicting an Autumn Scene, 1962, signed, framed. Size: 24" x 36" (60 x 91 cm) stretcher, 25" x 37" (63 x 93) frame. **\$200-400**



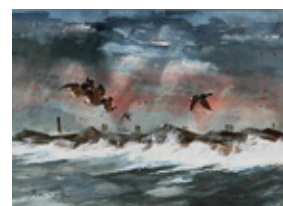
17

18. Hobson Pittman (American, 1890-1972), watercolor depicting sailboats, signed, float mounted in a gilt frame under glass. Size: 5" x 7" (12 x 17 cm) sheet, 14" x 15.5" (35 x 39 cm) frame. Condition: pin holes in corners, most likely original to the work. **\$300-500**



18

19. Ralph Scharff (American, 1922-1993), watercolor depicting birds in flight, signed, framed. Size: 19.5" x 27.5" (49 x 69 cm) sight, 28" x 36" (71 x 91 cm) frame. **\$300-500**



19



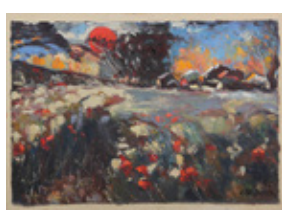
20



21



22



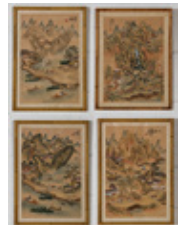
23



24



25



26



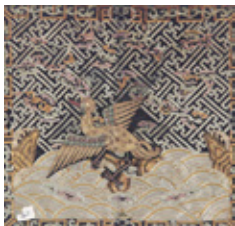
27



28



29



30

20. Edward Strawbridge (American, 20th Century), "Still Life Arrangement in Warm Tones", Oil on canvas board, signed, framed. Size: 14.5" x 18.5" (36 x 46 cm). **\$200-400**

21. Large Mid-19th century Landscape Painting, Oil on Canvas, signed C.W. King with large Gold Frame. Size: Sight: 16 x 25 (stretcher), 25.5 x 34.5 (frame). **\$600-800**

22. Otto Albert Hirth (German, 1899-1969), oil on board, painting of an Ocean Sunset with mountains. Size: 6 x 7.5 x 1.25 inches (15 x 19 x 3 cm). **\$200-400**

23. A. Zaldshnja Oil Painting (Albanian), Village Sunset, oil on board, dated 1992. Dimension: 13 x 18.5 inches (33 x 46 cm). **\$200-400**

24. Cristoforo Sparagna (Italian, 1905-1983), L'uomo del Campo (Man of the Field), 1946, oil on canvas. Size: 25.25" x 19.25" (stretcher), 31.25" x 25.5" x 1.75" (frame). **\$100-200**

25. Antique Family Tree Collage - Mixed Media Framed on Board. Size: 23" x 26.5" x 1" (58 x 67 x 2 cm). **\$100 -150**

26. Group of 4 Hand Painted Japanese Village Scenes on Silk, each signed and framed. Various frame sizes: 16.75" x 12.75" (42 x 32 cm) to 21" x 15" (53 x 38 cm). **\$100-150**

27. Mixed lot of 18 vintage 50's posters announcing varying European events, venues and locales. All dated throughout the 50's. Of particular interest are 2 French sporting event posters; one of an "American Football" game and the other of an "Air Meet." The remaining posters are travel and exhibition related. Sizes range from the smallest 18.5" x 12" to largest 39" x 27". **\$100-200**

28. Lot of 15 vintage 50's European gallery exhibition posters all dated throughout the 1950's. There are hand painted and hand decorated examples and several with recognizable artist's names. Sizes vary from the smallest measuring 23.5" x 15.5" to the largest 39" x 27". **\$50-100**

29. Lot of 39 vintage 50's European museum exhibition posters all dated throughout the 1950's. Examples from France, Italy, Germany and the Netherlands are included with many notable artists and events named. Sizes range from the smallest 23.5" x 15.5" to the largest 39" x 27". **\$200-300**

30. Framed antique Chinese gold and silver thread embroidered Rank Badge aka Mandarin Square signifying the civilian official rank. 19th Century. Size: 13" x 13.5" x 1.75" (33 x 34 x 4 cm). Provenance: Max Garb, Chicago, Illinois. **\$100-200**

31. 18th C English Carved Snuff Box. Size: 4" x 2" x 1" (10 x 5 x 2 cm). **\$100-200**



31

32. Four Asian Seals, one is of bamboo cut from a root section, and 3 carved from antler or horn. Tallest measures 3.5" x 1" x .75"; Bamboo block measures 1.5" x 2" x 1.5"; Elder Figure measures 1.5" x 1" x .5"; Trapezoidal stamp measures 1.75" x 1" x .75". Provenance: Max Garb, Chicago, Illinois. **\$100-200**



32

33. Japanese pipe (Kiseru) case in figural carved sheath (Kiseruzutsu) in the shape of a fish and pendant figural (Daruma) tobacco box (Tonkotsu) in mixed woods, bamboo, fruitwood, and boxwood. Featuring brass and ivory fittings. Circa 1870. Size: 16" x 2.5" x 2.25" (41 x 6 x 6 cm). Provenance: Max Garb, Chicago, Illinois. **\$400-600**



33



34

34. Japanese pipe (Kiseru) case in figural carved sheath (Kiseruzutsu) in the shape of a bearded man with mouth agape and pendant figural (Daruma) tobacco box (Tonkotsu) in mixed woods, bamboo, fruitwood, and boxwood. Featuring brass and ivory fittings. The mouthpiece and bowl of the pipe are heavy brass castings featuring cranes in flight. Also, a kidney shaped brass bean (Ojime) hangs on the cord and features a bee on top and an inset silver plaque engraved with a maker's mark. Circa 1870. Size: 16" x 2.5" x 2.25" (41 x 6 x 6 cm). Provenance: Max Garb, Chicago, Illinois. **\$400-600**



35



36

35. Giltwood Carved Buddhist Monk, circa 1900. Size: 6" x 9" x 8" (15 x 23 x 20 cm). Provenance: Max Garb, Chicago, Illinois. **\$100-150**

36. Carved Burl figure- Japanese Immortal. Accession number on underside. Size: 4" x 4" x 2.5" (10 x 10 x 6 cm). Provenance: Max Garb, Chicago, Illinois. **\$100-200**

37. Erotic Geisha Figure on stand. Carved boxwood. Size: 3.75" x 2.25" x 2" (10 x 6 x 5 cm). Provenance: Max Garb, Chicago, Illinois. **\$100-200**



37



38

38. Signed antique bronze Japanese Oni Noh Mask on Stand. Several marking on inside, including painted plaque with signature and accession numbers. Remnants of red and green paint, otherwise nice patina. Size: 7" x 7" x 4" (18 x 18 x 10 cm). Provenance: Max Garb, Chicago, Illinois. **\$200-400**



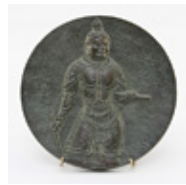
39. Ethnographic Grouping, including: 1) Primitive ring. Size: 1.5" x 1.375" x 1.375" (4 x 3 x 3 cm); 2) 3 Silver Bull's Head Baubles. Size: 1.375" x 1.25" x 0.75" (3.5 x 3 x 2 cm); 3) Ceremonial Bronze Dagger. Size: 10.5" x 3.5" x 2" (27 x 9 x 5 cm); Provenance: Max Garb, Chicago, Illinois. **\$100-200**



39



40



41

40. Group of two Chinese pewter teapots. The first is of stoneware with a pewter overlay featuring pierced and incised design of typical fortune charms and characters, size: 6.25" x 8" x 6". The other is of all pewter with an embossed foliate design bejeweled with carved jade, size: 5" x 7" x 5.5". **\$50-100**

41. Bronze Samurai Medallion. Size: 8.625" x 8.625" x .5". Provenance: GlaxoSmithKline LLC. **\$100-200**



42



43

42. Pair of Antique Blue Cloissone Vases. Size: 9.5" x 4" x 4" (24 x 10 x 10 cm). **\$100-150**

43. Antique Persian Ceramic Vase, pre 1900. Size: 7.5" x 3.5" x 3.5" (19 x 8 x 8 cm). **\$50-100**



44



45

44. Two Antique Asian Cloissone Items. Small Blue Bowl and Plate. Bowl: 4" x 4.5" x 4.5" (10 x 11 x 11 cm); Plate: 5.5" x 4" x .5" (13 x 10 x 1 cm). **\$100-150**

45. Antique Chinese Teapot with Plate. Size: 5" x 7" x 7" (12 x 17 x 17 cm) (Teapot); 6" diameter x .5" (15 cm diameter x 1 cm) (Plate). Stand not included. **\$100-150**



46



47

46. Antique Chinese Root Carving, composite baby in a basket. Size: 5" x 8" x 5" (12 x 20 x 12 cm). **\$100-200**

47. Antique Chinese Teapot and Jar with Lid. Size: 3" x 7" x 5" (7 x 17 x 12 cm) (Teapot); 6" x 5" x 5" (15 x 12 x 12 cm) (Jar). **\$100-200**



48



49

48. Authentic Early 20th C. Chinese Advertisement Poster. Size: 13.5" x 29" (34 x 73 cm). **\$100-200**

49. Authentic Early 20th C. Chinese Advertisement Poster. Size: 13.75" x 28.5" (34 x 72 cm). **\$100-200**



50



51

50. Antique Chinese Reverse Painted Glass. Size: 22" x 16" x 1" (55 x 40 x 2 cm). **\$100-200**

51. Chinese Carved Agate Figurine on Stand. Size: 5" x 6" x 2" (12 x 15 x 5 cm). **\$100-200**



52



53

52. Antique Chinese Porcelain Vase. Size: 6" x 3" x 3" (15 x 7 x 7 cm). **\$200-300**

53. Pre 1800 Asian Ceramic Vase. Size: 5" x 3.5" x 3.5" (12 x 8 x 8 cm). **\$100-200**

54. Vintage Asian Scroll, size approximately: 10' x 1'0". \$200-300



54

55. Tibetan Mandala Painting; 19th C. Size: 31" x 33" (78 x 83 cm). \$100-200



55

56. Antique Carved Wooden Thai Temple Figure. Size: 14" x 6" x 4.5" (35 x 15 x 11 cm). \$150-250



56

57. Antique Asian Silver Bowl with Cover, pre 1900. Size: 4" x 5" x 5" (10 x 12 x 12 cm). \$300-500



57

58. Antique Chinese Porcelain Bowl. Size: 3" x 5" x 5" (7 x 12 x 12 cm). \$100-150



58

59. Bronze Seated Buddha, pre 1900. Size: 9" x 6" x 4" (22 x 15 x 10 cm). \$200-300



59

60. Antique Amber Kubera, seated figure. Size: 4" x 3" x 2" (10 x 7 x 5 cm). \$200-300



60

61. Vintage Bronze Thai Dancing Figure. Size: 11.5" x 10" x 3" (29 x 25 x 7 cm). \$100-200



61

62. Antique Chinese Blue and White Cup with Dish and Saucer. Size: 3.5" x 4" x 4" (8 x 10 x 10 cm). \$100-150



62

63. Vintage Blanc De Chine Vase. Size: 13" x 7" x 7" (33 x 17 x 17 cm). \$100-200



63

64. Asian Jade and Hardstone Tree Arrangement in Champleve Pot. Size: 10.5" x 10" x 8.5" (26 x 25 x 21 cm). \$50-100



64

65. Vintage Asian Jewelry Box. Size: 12" x 8" x 6" (30 x 20 x 15 cm). \$40-60



65

66. Antique Chinese or Tibetan Painting of Buddha on Cloth. Size: 27" x 44" (68 x 111 cm). \$200-400



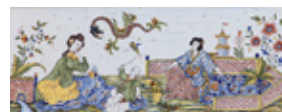
66

67. Antique Chinese Painting on Cloth. Size: 26" x 52" (66 x 132 cm). \$200-400



67

68. Antique Painted Chinese Porcelain Plaque. Size: 21.5" x 9" x 1" (54 x 22 x 2 cm). \$200-300



68



69



70

69. Fine Engraved Islamic Copper Basin, pre 1900. Size: 6" x 10" x 10" (15 x 25 x 25 cm). **\$100-200**

70. 18th C. Middle Eastern Brass Mounted Box. Size: 8" x 12" x 9" (20 x 30 x 22 cm). **\$500-700**



71



72

71. Pre Columbian Urn, polychrome, broken foot. Size: 10" x 6" x 6" (25 x 15 x 15 cm). **\$100-200**

72. Pedestal Pottery Bowl. Size: 6" x 7" x 7" (15 x 17 x 17 cm). **\$200-400**



73



74

73. Redware Pottery Vessel. Size: 4" x 4.5" x 4.5" (10 x 11 x 11 cm). **\$200-400**

74. Two Blackware Pottery Vessels, pre 1900. Ranging in size from 6.5" x 10" x 2" (16 x 25 x 5 cm) to 8" x 6" x 3.5" (20 x 15 x 8 cm). **\$200-300**



75



76

75. Chancay False Head Mummy Bundle, circa 1000-1470. Size: 19" x 16" x 5" (48 x 40 x 12 cm). Provenance: Millea Bros., lot 16, 2/19/11. **\$1500-2000**

76. Nishapur Glazed Ceramic Bowl with Kufic Script, eastern Iran, 10th c. Size: 3.5" x 9.5" x 9.5" (8 x 24 x 24 cm). Provenance: lot 413, Millea Bros., 2/20/11. **\$800-1200**



77



78

77. Seljuk Bronze Tripod Cauldron, circa 1016-1153. Size: 7" x 17" x 17" (17 x 43 x 43 cm). Provenance: Millea Bros. lot 674, 2/20/11. **\$800-1200**

78. Geode Cross-Section. Size: 9.5" x 11" x 2.75" (24 x 27 x 6 cm). **\$100-150**



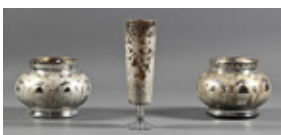
79



80

79. Tom Philabaum glass sculpture signed "Philabaum Carlson F35 1984" Contemporary. Size: 18" x 7.5" x 4.5" Provenance: GlaxoSmithKline LLC. **\$100-200**

80. Dale Chihuly (American, b. 1941), Blue Seaform Vase, Glass, 1997, signed, engraved "PP'97". Size: 8.5" x 9" x 9" (21 x 22 x 22 cm) (vase), 14" x 12.5" x 12.5" (35 x 31 x 31 cm) (plexibox). Provenance: a private Philadelphia, PA collection. **\$1500-2500**



81

81. Lot of 3 copper wheel etched mercury glass vessels- 2 shallow bowls and 1 tall stemmed vase. Size: 13" x 4" x 4" (33 x 10 x 10 cm); 8" x 10" x 10" (20 x 25 x 25 cm). **\$100-200**

82. Lot of 3 copper wheel etched mercury glass vessels- 1 baluster shaped bottle, 1 gourd shaped vessel, and 1 lidded bowl. Size: 14" x 12" x 12" (35 x 30 x 30 cm); 19" x 10" x 10" (48 x 25 x 25 cm); 15" x 12" x 12" (38 x 30 x 30 cm). **\$150-250**



82



83

83. Pair tall etched glass vases with silvered bases. Size: 24" x 9" x 9" (60 x 22 x 22 cm); 16" x 11" x 11" (40 x 27 x 27 cm). **\$150-250**

84. Lot of 3 wheel etched mercury glass vessels with oxidized finish. Size: 18" x 10" x 10" (45 x 25 x 25 cm); 15" x 12" x 12" (38 x 30 x 30 cm); 15.5" x 12" x 12" (39 x 30 x 30 cm). **\$150-250**



84



85

85. Lot of 3 wheel etched mercury glass vessels on contrasting oxidized silver field. Size: 16" x 9" x 9" (40 x 22 x 22 cm); 11" x 14" x 14" (27 x 35 x 35 cm); 9" x 14" x 14" (22 x 35 x 35 cm). **\$150-250**



86



87

86. Pair of Green Glass Carboys. Size: 19" x 13" x 13" each (48 x 33 x 33 cm). **\$150-250**

87. Pair of Mercury Glass Carboys. Size: 19" x 13" x 13" each (48 x 33 x 33 cm). **\$150-250**

88. Mixed lot of two glass vessels; 1) Milk glass gourd shaped vessel; 2) Amber glass carboy. Size: 19" x 13" x 13" each (48 x 33 x 33 cm). **\$150-250**



88



89

89. Pair wheel cut stemmed hurricane lustres. Size: 15" x 9" x 9" (38 x 22 x 22 cm) each. **\$150-250**

90. Pair of Wheel Cut Glass Bottles. Size: 20" x 6" x 6" (50 x 15 x 15 cm) each. **\$100-200**



90



91

91. Lot of 2 Pair frost etched glass vases- 1 pair compote form vases and 1 pair stemmed hurricane vases. Size: 16" x 7" x 7" (40 x 17 x 17 cm) each; 12" x 8" x 8" (30 x 20 x 20 cm) each. **\$200-300**

92. Lot of 2 pair cut and pressed glass table accessories- 1 pair candlesticks and 1 pair chalice form lustres. Size: 13" x 2.5" x 2.5" (33 x 6 x 6 cm) each; 16" x 7" x 7" (40 x 17 x 17 cm) each. **\$100-200**



92



93

93. Group of Four Glass Candlesticks. 1) Pair of clear glass candlesticks, size: 16.5" x 3" x 3" (41 x 7 x 7 cm) each; 2) Pair black glass candlesticks, size: 15" x 3" x 3" (38 x 7 x 7 cm) each. **\$100-200**



94

94. Lalique Cat Figure- Marked "Chat Assis" Size: 8.5" x 5.5" x 3.5". **\$500-700**



95



96

95. Lalique Pressed Glass Vase - Peonies. Size: 9.75" x 6.25" x 6.25". **\$200-300**

96. Lalique "Dampierre" Vase - Birds. Size: 4.75" x 4.5" x 4.5". Condition: minor firing bubble. **\$150-200**



97



98

97. Lalique Vase - "Ondines" Bathers. Size: 9.38" x 7.5" x 7.5". **\$800-1000**

98. Pair of Lalique Cat Paperweights, Marked Kitten, 1993. Size: 5" x 3" x 1.75" each. **\$300-400**

99. Lalique Parfum Bottles- Anemone and Flask. Size: 6.25" x 5.5" x 3.5" and 6.5" x 5.5" x 1.75". **\$400-600**



99



100

100. Art glass bowl marked Marquis by Waterford. Flashed glass in bluish/green tint with turned in and pendant lip design. Contemporary. Size: 3" x 7" diameter (7 x 17 cm). Condition: Imperfections on lip. **\$50-100**



101



102

101. Decorative opalescent glass shallow bowl with brass rim and filigree handles inset with inset porcelain painted plaques. Foliate design, in high relief on the bowl's underside, is marked "Leunox, France" and features the hops vines motif. Plaques feature paintings of young courtesans at leisure. Circa 1950. Size: 2.5" x 14.25" x 12" (6 x 36 x 30 cm). Size of bowl without handles is 12" diameter (30 cm). **\$200-300**

102. Iridescent Murano glass charger marked "Yalos Casa, Murano. Size: 3.125" x 17.5" diameter (7 x 44 cm). **\$200-300**



103



104

103. 18th C painted and gilt decorated Sevres vase mounted with bronze fittings on bronze base. Base is stamped "FRANCE" on underside and porcelain socle bears the "Double Louis c" hallmark. Circa 1750. Size: 9" x 4" x 4" (22 x 10 x 10 cm). **\$400-600**

104. Twin-handled polychrome salt glaze and Sgraffito decorated stoneware vase. Possibly Korean. Motif features a costumed nomadic figure traveling through a fantasy landscape against an azure sky. Circa 1920's. Size: 12.5" x 6.25" x 6.25" (31 x 15 x 15 cm). Condition: Losses to base. **\$50-100**



105



106

105. Fenton style violet satin stretch glass bowl. Unmarked. Contemporary. Size: 4.75" x 9.25" x 9.25" (12 x 23 x 23 cm). **\$50-100**

106. Asian carved soapstone figural group featuring Carp / Koi and Lotus. Size: 6" x 3.5" x 2" (15 x 8 x 5 cm). Condition: losses. **\$50-100**

107. Twin arboreal handled Art Nouveau painted and gilt decorated vase marked "Turn Teplitz Bohemia, RStK, Made in Austria" on the underside. Hallmark dates 1899-1905. Size: 7.5" x 5" x 4.25" (19 x 12 x 10 cm). **\$250-350**



107

108. German painted porcelain plaque of a peasant boy mounted in an ornate plated metal frame. No marking on plaque. Size: Plaque 1.5" x 1.125" (3 x 2 cm) Frame 5.75" x 4.5" (14 x 11 cm). Condition: light surface abrasion thru hair/face. **\$200-300**



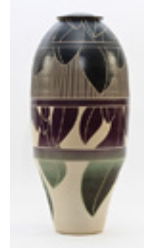
108

109. Art Deco style polychrome patinated metal spelterware "Dancer" figure. Unsigned. Unmarked. Contemporary. Size: 21.75" x 23.5" x 10" (55 x 59 x 25 cm). **\$800-1200**



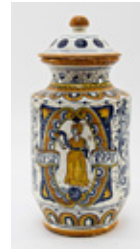
109

110. Wayne L. Bates (American, 20th C.), Massive Sgraffito Stoneware Vase, 1982. Size: 27" height (68 cm). Provenance: GlaxoSmithKline LLC. **\$100-200**



110

111. Custom painted Majolica apothecary jar. Numbered 15/50, dated 1997 and bearing a stylized fleur de lis hallmark on the underside. Size: 14.5" x 7.5" Provenance: GlaxoSmithKline LLC. **\$100-200**



111



112

112. Mid Century Ceramic Vase, possibly Danish. Size: 7" x 5" x 5" (17 x 12 x 12 cm). **\$100-150**

113. 18th C. Rustic English Spatterware Pitcher. Size: 10.5" x 6" x 6". **\$100-200**



113



114

114. Group of 3 American, 19th Century Stoneware Vessels. 1) 1.2 gallon vessel, size: 7.5 x 10 x 10 inches (19 x 25 x 25 cm), hairline crack; 2) Unmarked handmade vessel, size: 5.5 x 7.5 x 7.5 inches (13 x 19 x 19 cm); 3) Black Glazed Pitcher, size: 8 x 6.5 x 6.5 inches (20 x 16 x 16 cm), minor imperfections. **\$100-150**



115



116

115. Pair of American, 19th Century Decorated Stoneware Vessels. 1) Vase with Cobalt Blue Floral Motif, size: 10 x 8.5 x 8.5 inches (25 x 21 x 21 cm); 2) Two Gallon, Cowden & Wilcox, Harrisburg, Pa. Stoneware Jar with Cobalt Blue Floral design, size: 12 x 8.5 x 8.5 inches (30 x 21 x 21 cm). Condition: Hairline cracks in both. **\$150-250**

116. Large American, 19th Century Five Gallon Stoneware Crock Pot with Cobalt Blue Bird Design by Haxton & Co., Port Edward, New York. Size: 12.5 x 13 x 13 inches (31 x 33 x 33 cm). Condition: Hairline cracks, and losses, but stable overall. **\$100-150**



117

117. Carved Blackware Bowl. Size: 6" x 10" x 10" (15 x 25 x 25 cm). **\$100-200**



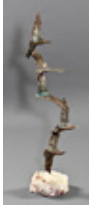
118



119

118. French Hand-Painted Faience Tray, 19th c. Size: 17" x 13" x 1" (43 x 33 x 2 cm). **\$300-500**

119. Nude Female Torchiere Blackamoor style carved polychromed wood sculptural lamp. Size: 76" x 17" x 13" (193 x 43 x 33 cm). **\$800-1200**



120



121

120. Curtis Jere Modernist Bronze and Marble Table Top Sculpture depicting Birds in Flight, signed. Size: 30.5" x 6.5" x 8". Provenance: GlaxoSmithKline LLC. **\$200-300**

121. Patinated leaping frog fountain figure. Size: 27" x 14" x 19" (68 x 35 x 48 cm). **\$300-500**



122



123

122. Pair of Yellow Vaseline Glass Lamps. Size: 12" x 4" x 3.5" (30 x 10 x 8 cm). **\$50-100**

123. Decorative 3pc Mixed Porcelain Garniture lot consisting of one figural bisque lamp marked "Made in Japan" and 2 reticulated continental gilt and painted flask form vases with illegible markings. Figure measures 12" x 4" x 3" and vases measure 13" x 8.5" x 3.5". **\$40-60**



124



125

124. Carved and Polychrome Wooden Stallion, 2nd Quarter 19th C. Origin: India. Size: 15" x 14" (38 x 35 cm). Provenance: GlaxoSmithKline LLC. **\$100-200**

125. Wooden Wall Clock by Howard Miller Clock Co. Model: 612-210. Size: 25" x 16.5 x 5.5". Provenance: GlaxoSmithKline LLC. **\$40-60**



126



127

126. Carved, Bejeweled and Polychromed Horse. Size: 10.25" x 9.5" x 2.75" Provenance: GlaxoSmithKline LLC. **\$100-200**

127. Brass Rhino Sculpture by Frederick Cooper, Chicago. Size: 8.5" x 12" x 5.75" Provenance: GlaxoSmithKline LLC. **\$150-250**



128



129

128. Three Painted Wood Signs, Smith & Gilbert, 2000. Size: 27" x 36" (68 x 91 cm). Giant Chemical Co., 2000. Size: 47" x 26" (119 x 66 cm). Mahlon K. Smith, 2000. Size: 22" x 36.5" (55 x 92 cm). Provenance: GlaxoSmithKline LLC. **\$50-100**

129. Pair patinated cast iron horse heads mounted on backplate. Size: 13" x 8" x 10" (33 x 20 x 25 cm). **\$300-500**



130

130. Cast stone composite lion's head cartouche. Size: 25" x 17" x 13" (63 x 43 x 33 cm). **\$300-500**

131. Mounted stag head-wood. Size: 18" x 16" x 18" (45 x 40 x 45 cm). **\$200-400**



131

132. Mounted Stag head - plated metal. Size: 25" x 12" x 12" (63 x 30 x 30 cm). **\$200-400**



132

133. Industrial pendant caged lamp fixture. Size: 16" x 15" x 15" (40 x 38 x 38 cm) Lamp; 25" (63 cm) Chain. **\$100 -200**



133



134

134. Mirror w beveled mirror tile border. Size: 48" x 35.5" x 1" (121 x 90 x 2 cm). **\$250-350**

135. Palladian shaped metal framed mirror with concave dappled mirror border. Size: 67" x 31" x .5" (170 x 78 x 1 cm). **\$300-500**



135



136

136. Palladian shaped metal framed mirror with concave dappled mirror border. Size: 67" x 31" x .5" (170 x 78 x 1 cm). **\$300-500**

137. Group of 3 faience apothecary jars. Size: 11" x 5" x 5" (27 x 12 x 12 cm) each. **\$100-150**



137

138. Group of 3 faience apothecary jars. Size: 11" x 5" x 5" (27 x 12 x 12 cm) each. **\$100-150**



138

139. Victorian Needle Case, 19th c. 3.75 x 0.75 inches (9 x 1 cm) (case). **\$50-70**



139

140. Antique Asian Carved Fan. Size: 8.25 x 1 x 0.5 (20 x 2 x 1 cm) (Collapsed), 8.25 x 13.75 (20 x 34 cm) (Expanded). **\$50-100**



140

141. Collection of Fourteen Tea Cups and Saucers, Hand Painted Rosenthal, KPM, Asian cup without handle, and 2 Turkish alabaster cups. Ranging in Size from 2" x 2.5" to 4.5 (diameter) x .5 inches (5 x 6 - 11 x 1 cm). **\$80-120**



141

142. Bronze "Window to my Heart" Sculpture. Size: 15" x 11" x 11" (38 x 27 x 27 cm). **\$100-200**



142

143. Rococo Style Giltwood Wall Clock. Originally made for Bailey Banks & Biddle Co. Marked on transverse "Gotene, Ljungstroms Uriodalaabrik, made in Sweden. Original movement replaced with quartz movement. Size: 22" x 12" x 4.5" (55 x 30 x 11 cm). **\$50-100**



143



144



145

144. Haitian Metal Dish and Hand Hammered Metal Sculpture. Size: 4" x 13.5" x 13.5 (10 x 34 x 34 cm) (DISH); 21" x 17" x 4" (53 x 43 x 10 cm). **\$100-200**

145. Religious Hanging Cabinet Box, 20th c. Size: 23" x 14" x 4" (58 x 35 x 10 cm). **\$100-150**



146



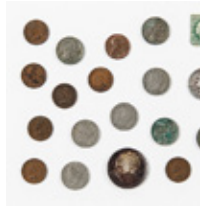
147

146. Antique Wooden Hand Painted Wall Barometer. Size: 38" x 4" x 1.5" (96 x 10 x 3 cm). **\$100-200**

147. Estate Box Lot of Bachelor's Conquest Souvenirs. A varied collection of keepsakes from soirees, functions, and fetes. **\$40-60**



148



149

148. Lot of Two Phoenixville Ironworks Patterns, wood, paint, early 20th c. Size: 48" x 19" x 4" (121 x 48 x 10 cm); 17" x 25" x 17" (43 x 63 x 43 cm). **\$50-100**

149. Numismatists' starter collection of coins. Featuring 1 Sesquicentennial Silver Half Dollar, 1 Sesquicentennial Gold \$2.5 Coin, 1 Silver 1942 Quarter, 3 Buffalo Nickels, 5 1883-1912 Nickels, 7 Indian Head Pennies and 1 1946 Wheat sheaf penny. Also including a 1 cent stamp. **\$400-600**



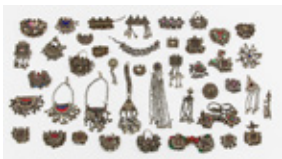
150



151

150. Ten Tribal Necklaces. Sizes Ranging in length from: 24" - 68" (60 - 172 cm). **\$100-150**

151. Eleven Misc. Old Tribal Necklaces. Length Ranging From: 14" - 42" (35 - 106 cm). **\$100-200**



152



153

152. Large Collection of Old Tribal Jewelry. **\$100-200**

153. Large Collection of Old Tribal Jewelry. **\$100-200**



154



155

154. Indian Necklace with Bells. Size: 13.25 x 7.25 inches (33 x 18 cm). **\$50-100**

155. Navajo Ring. Size: 2.13 x 1.06 x 1.06 inches. Weight: 19 grams. **\$50-100**



156



157

156. Navajo Turquoise Watch Band. Size: 1.75 x 2.75 x 2.25 inches (4 x 6 x 5 cm). **\$150-250**

157. Navajo Turquoise Coral Watch Band by David F. Garcia. Size: 1 x 3 x 2 inches (2 x 7 x 5 cm). **\$100-150**

158. Native American Santa Domingo Necklace. Length: 17 inches (43 cm). **\$200-300**



158

159. Navajo Turquoise Pin. Size: 3.25 x 3.25 inches (8 x 8 cm). **\$100-150**



159

160. Sterling Silver Kachina Pendant Necklace. Pendant Size: 2.5 x 1.5 x 0.5 inches (6 x 3 x 1 cm), Chain Length: 9.5 inches (24 cm). Weight: 24.0 grams. **\$100-150**



160



161

161. Native American Beaded Earrings. Size: 2 x .75 x .75 inches (5 x 1 x 1 cm). **\$60-90**

162. Navajo Sterling Silver, Feather Earrings, inscribed. Size: 3.25 x .75 x .25 inches (8 x 1 x 1 cm). Weight: 10.3 grams. **\$60-90**



162



163

164. Native American Bear Fetish / Pendant. Size: .75 x 1.75 x .75 inches. **\$30-50**



164



165

165. Cast Metal George Washington Medallion. Size: 4" diameter (10 cm diameter). **\$40-80**

166. Two Antique Copper Ladles, tin residue. Size: approx. 21 x 6 inches each (53 x 15 cm). **\$50-100**



166



167

167. Lot 3 Decorative Large Scale Graduated copper tubs. Size: 8" x 31" x 31" (20 x 78 x 78 cm); 6" x 22" x 22" (15 x 55 x 55 cm). **\$200-300**

168. Group of 5 Copper pots- polished. Sizes Ranging: 6" x 10" x 10" (15 x 25 x 25 cm) - 10" x 13" x 13" (25 x 33 x 33 cm). **\$100-200**



168



169

169. Lot 5 Copper Pots- Oxidized finish. Sizes Ranging: 6" x 11" x 11" (15 x 27 x 27 cm) - 8" x 13" x 13" (20 x 33 x 33 cm). **\$150-250**

170. Lot 6 Copper Pails w/ Wrought Iron Handles. Sizes Ranging: 6" x 7" x 7" (15 x 17 x 17 cm) - 9" x 10" x 10" (22 x 25 x 25 cm). **\$100-200**



170



171

171. Lot 5 Graduated hanging copper pots. Pots Ranging: 3" x 8" x 8" (7 x 20 x 20 cm) to 4" x 12" x 12" (10 x 30 x 30 cm); Chains ranging in size: 14" to 19" (35 - 48 cm). **\$100-200**



172



173

172. Lot 5 copper ewers. Ranging in Size: 12" x 9.5" x 9.5" (30 x 24 x 24 cm); 15" x 12" x 12" (38 x 30 x 30 cm). **\$100-200**

173. Lot 5 Large Scale Graduated Copper Saute Pans w/ Wrought Iron Handles. Ranging in Size: 3" x 12" x 12" (7 x 30 x 30 cm); 3" x 15" x 15" (7 x 38 x 38 cm). **\$100-200**



174



175

174. Lot 5 Graduated copper ladles. Size: 20" x 6" x 3" (50 x 15 x 7 cm). **\$100-200**

175. Service for 8- Decorative copper dinner ware- 40 pcs. Size: 1" x 7" x 7" (2 x 17 x 17 cm) - 2" x 10" x 10" (5 x 25 x 25 cm). **\$200-300**



176



177

176. Fine 19th C. Pennsylvania Dutch Chair, yellow paint and decoration, excellent condition, purchased in 1980's from Finkle and Daughter, Philadelphia. Size: 34" x 18.5" x 17" (86 x 46 x 43 cm). **\$200-400**

177. Shaker shawl rocker with delicately turned yoke over ladder splat back and woven tape seat, 19th c. Size: 41" x 23" x 31" (104 x 58 x 79 cm). **\$200-400**



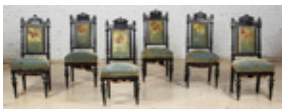
178



179

178. Antique Aesthetic Movement Parlor Armchair c. 1880. Ebonized frame with cut velvet upholstery and brocade panel inset on back cushion. Size: 45" x 26" x 22" (114 x 66 x 55 cm). **\$100-300**

179. Antique Aesthetic Movement Settee c.1880. Ebonized frame with cut velvet upholstery. Center back cushion inset with floral brocade panel. Remnants of floral appliques on flanking side back cushions. Size: 46" x 65" x 24" (116 x 165 x 60 cm). **\$200-400**



180



181

180. 6 Antique Aesthetic Movement Side Chairs c. 1880. Ebonized frames with cut velvet seats and remnants of floral appliques. Size: 41" x 18" x 17.5" (104 x 45 x 44 cm). **\$400-600**

181. Cuban mahogany American Empire drop leaf pedestal dining table with carved lion legs and single drawer circa 1830. Size: 30 x 42 x 25 inches (collapsed), 30 x 57 x 42 inches (extended). **\$400-500**



182

182. A Regency mahogany double pedestal side-board, circa 1820 with three drawers and two shelved storage areas. Size: 39 x 60 x 19.5 inches. Condition: minor veneer lifting. **\$500-700**

183. 18th century English game table with book-matched Cuban mahogany top with inlay stringing. Size: 28 x 35.5 x 17 inches (collapsed), 28 x 35.5 x 34.5 inches (extended). Condition: one pull broken. **\$250-350**



183

186. Aeolian Orchestrelle Player Reed Organ #8027, Style#1 with Two Chairs, One Bench, and 133 Music rolls. Size: 59" x 61" x 27" (149 x 154 x 68 cm) (Piano); 36" x 19" x 17" (91 x 48 x 43 cm) (Chair 1); 38" x 18" x 17" (96 x 45 x 43 cm) (Chair 2); 23" x 23" x 12" (58 x 58 x 30 cm) (Bench). Condition: Inoperable. **\$500-700**



186

187. Corbusier Style Sofa. Size: 29" x 60" x 26" (73 x 152 x 66 cm). **\$100-300**



187



188

188. Corbusier Style Club Chair. Size: 29" x 35" x 26" (73 x 88 x 66 cm). **\$100-200**



189

189. Danish Modern rocker. Size: 27" x 28" x 28" (68 x 71 x 71 cm). **\$100-200**



190

190. Danish Modern credenza. Size: 30" x 64" x 18" (76 x 162 x 45 cm). **\$200-300**

191. Danish Modern wall hung secretary/desk. Size: 49" x 55" x 13" (124 x 139 x 33 cm). **\$100-200**



191

192. Group of 3 Mid-century modern side chairs. Size: 39" x 17" x 17" (99 x 43 x 43 cm); 39" x 18" x 17" (99 x 45 x 43 cm). **\$100-200**



192

193. Two Reclining Vintage Chairs and an Ottoman. Made from water hyacinth and teak; Thailand. Size: 32" x 27" x 48" (81 x 68 x 121 cm) Chairs; 15" x 27" x 15" (38 x 68 x 38 cm) Ottoman. **\$200-400**



193

194. 50's Dinette Table with Chrome Legs and Porcelain Enamel Top. Two retracting leaves and utensil drawer. Size: 32" x 40" x 25" (81 x 101 x 63 cm) when closed; 32" x 46" x 25" (81 x 116 x 63 cm) when extended. **\$50-100**



194

195. 50's Steel and Porcelain Enamel Dinette Table. Bent tube legs, two retracting leaves, and utensil drawer. Size: 31" x 40" x 25" (78 x 101 x 63 cm) when closed; 31" x 45" x 25" (78 x 114 x 63 cm) when extended. **\$50-100**



195

196. Hand Painted Four Panel Floor Screen with Peacocks. Size: 72" x 64" (182 x 162 cm). **\$200-300**



196



197



198

197. Pair twin handled cast iron garden urns on pedestal bases. Lion and wreath motifs. Size: 26" x 16" x 16" (66 x 40 x 40 cm). **\$700-900**

198. Wrought iron garden trellis/pergola flanked by planter boxes. Painted surface. Size: 95" x 82" x 16" (241 x 208 x 40 cm). **\$400-600**



199



200

199. Wrought iron Birdcage on stand. Size: 61" x 18" x 14" (154 x 45 x 35 cm). **\$200-300**

200. Pair stylized wrought iron topiaries. Size: 49" x 8" x 8" (124 x 20 x 20 cm). **\$100-150**



201



202

201. Pair Regency style iron and wood planters w/ lion face/paw details and ring handles. Size: 24" x 16" x 16" (60 x 40 x 40 cm). **\$500-700**

202. Two classical cast aluminum figural wall ornaments. Size: 60" x 16" x 4" (152 x 40 x 10 cm). **\$300-500**



203



204

203. Decorative Cast Aluminum Torso. Feature swing out prop for floor use or can be wall hung. Size: 50" x 14" x 5" (127 x 35 x 12 cm). **\$100-200**

204. Decorative Cast Aluminum Sculpture-Seated Torso on a Crag. Size: 25" x 17" x 3" (63 x 43 x 7 cm). **\$100-200**



205



206

205. Decorative Cast Aluminum Torso. Size: 55" x 17" x 7" (139 x 43 x 17 cm). **\$100-200**

206. Large Scale Decorative Industrial Saw Blade. Size: 47" x .25" (119 x .6 cm). **\$100-200**



207



208

207. Large Lot Primitive Farming Tools, 13 pcs. Contained in hollowed out log. Size: 29" x 17" x 17" (73 x 43 x 43 cm) (Bucket); Tools ranging in sizes from 39" - 82" (99 - 208 cm). **\$100-200**

208. Four Antique Saws. 3 Two-man Crosscut saws and one bow saw. Sizes Ranging: 23.5" - 72" (59 x 182 cm). **\$100-200**



209



210

209. Polychrome carved wood Santos figure with articulated arms. Size: 21" x 6" x 3" (53 x 15 x 7 cm). **\$200-300**

210. Painted tin Retablo Madonna set in a rustic frame with hints of gold paint. Circa 1900. Size: 15.5" x 10.5" x 1" (40 x 26 x 2 cm). Provenance: Max Garb, Chicago, Illinois. **\$100-200**

211. Lithographed stamped tin Russian icon frame marked "A. Zhako & Co. Moscow 1910." Size: 10" x 14.25" x 1" (25 x 36 x 3 cm). Provenance: Max Garb, Chicago, Illinois. **\$100-200**



211

212. Antique Mexican Painted Copper Mask Shaped as a Frog. Size: 16.25" x 10" x 5" (41 x 25 x 13 cm). Toile Painted Copper Owl Mask. Size: 16" x 11" x 2" (41 x 28 x 5 cm). Provenance: Max Garb, Chicago, Illinois. **\$150-250**



212

213. Antique Mexican and Guatemalan Dance Masks. 1) Red Painted Mexican Dance Mask. Size: 6" x 5" x 3.5" (15 x 13 x 9 cm); 2) Antique Guatemalan Dance Mask, patina, paint residue. Size: 7" x 6.5" x 5" (18 x 16 x 13 cm). Provenance: Max Garb, Chicago, Illinois. **\$100-200**



213



214

214. Eight Antique Mexican Carved Wood Dance Masks. Nice patina. Largest Mask measuring 7" x 9" x 6.5". Provenance: Max Garb, Chicago, Illinois. **\$400-600**

215. Old Northwest Coast Painted Kwakiutl Mask. Size: 9.5" x 7.5" x 4" (24 x 19 x 10 cm). Provenance: Max Garb, Chicago, Illinois. **\$400-600**



215



216

216. Old Northwest Coast Painted Kwakiutl Mask Size: 10" x 9" x 6" (25 x 23 x 15 cm). Provenance: Max Garb, Chicago, Illinois. **\$400-600**



217



218

217. Cassowary Femur Bone Dagger. Size: 12" x 1.75" x 1.5" (30 x 4 x 4 cm). Carved Antler- Figural Cormorant in the style of Stan Hill. Size: 8" x 1.5" x 2" (20 x 4 x 5 cm). Provenance: Max Garb, Chicago, Illinois. **\$50-100**

218. Incised Gourd Canteen. Affixed Label Reads: " Wood Canteen, African (Poss. Phillippine Schilling Museum.)" Size: 6" x 5.5" x 3" (15 x 14 x 8 cm). Provenance: Max Garb, Chicago, Illinois. **\$100-200**



219

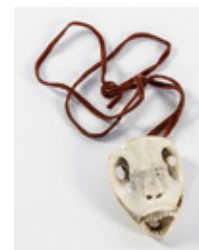


220

219. Lot of 11 West African Manillas aka Currency Bracelets. Eight (8) in heavy cast bronze, two (2) in cast white metal and one (1) hammered white metal. Ranging in size: 2.5" wide - 4.75" wide. Provenance: Max Garb, Chicago, Illinois. **\$100-200**

220. Stan Hill (Canadian Mohawk Tribe, b. 1921), Signed Tortoise Shell Owl 1980. Size: 6" x 3.5" x 0.5" (15 x 9 x 1 cm). Provenance: Max Garb, Chicago, Illinois. **\$300-500**

221. Stan Hill (Canadian Mohawk Tribe, b. 1921), Signed Carved Skull 1980. Skull of unknown animal carved and transformed to another menacing figure's skull. Size: 2.5" x 2" x 1" (6 x 5 x 2.5 cm). Provenance: Max Garb, Chicago, Illinois. **\$400-600**



221



222



223

222. Russ Hill (Canadian Mohawk Tribe, 20th Century), Carved Bone Skull, 1979. Size: 3.375" x 1" x 0.75" (8.5 x 2.5 x 2 cm). Provenance: Max Garb, Chicago, Illinois. **\$200-400**

223. Stan Hill (Canadian Mohawk Tribe, b. 1921), Carved Skull - Signed, No Date. Skull cap of unknown animal transformed to stylistic talisman Size: 2.5" x 2" x 1" (6 x 5 x 2.5 cm). Provenance: Max Garb, Chicago, Illinois. **\$200-400**



224



225

224. Lot of 3 Northwest Coast talismans. One carved of walrus ivory measuring 2.25" x 1.625" x .375" and two carved of whale bone the larger measuring 2.375" x 2.375". Provenance: Max Garb, Chicago, Illinois. **\$200-300**

225. Antique Sepik River Gable Mask. Remnants of red and white paint. Tightly woven reed. Bottom features a cup as if to be mounted on a staff. Size: 12" x 3.25" x 4" (30 x 8 x 10 cm). Provenance: Max Garb, Chicago, Illinois. **\$100-200**



226



227

226. Ogoni articulated mask, Nigeria. Stylized coiffure. Size: 7.5" x 5" x 5" (19 x 13 x 13 cm). Provenance: Max Garb, Chicago, Illinois. **\$100-200**

227. Bronze Ram's Head Mask on Stand. Possibly Benin. Patinated. Size: 10.5" x 5.75" x 4.75" (27 x 15 x 12 cm). Provenance: Max Garb, Chicago, Illinois. **\$200-300**



228



229

228. Dogon Mask on Stand. Label affixed on underside reads "Dogon Mask from Mali \$2200." Size: 12" x 6" x 6" (30 x 15 x 15 cm). Provenance: Max Garb, Chicago, Illinois. **\$200-300**

229. Old Mexican Dance Mask, carved polychrome wood. Size: 20" x 9" x 13" (51 x 23 x 33 cm). Provenance: Max Garb, Chicago, Illinois. **\$200-400**



230



231

230. Chokwe Tinted Ivory Divination Figure, patina, dense and heavy. Size: 9.5" x 3" x 2.5" (24 x 8 x 6 cm). Provenance: Max Garb, Chicago, Illinois. **\$100-200**

231. Carved Wood Figure/plaque. Size: 17" x 7" x 3" (43 x 18 x 8 cm). Provenance: Max Garb, Chicago, Illinois. **\$50-100**



232



233

232. Salampasu Tribe Woven Copper Mask. Size: 26.6" x 8" x 10" (68 x 20 x 25 cm). Provenance: Max Garb, Chicago, Illinois. **\$200-400**

233. Kota Reliquary Guardian, copper clad. Size: 24.5" x 14" x 4" (62 x 36 x 10 cm). Provenance: Max Garb, Chicago, Illinois. **\$100-200**

234. Kuba carved mask embellished with feathers, cowrie shells and attached to a woven helmet structure. Size: 22" x 7.5" x 12" (56 x 19 x 30 cm). Provenance: Max Garb, Chicago, Illinois. **\$100-200**



234

235. Yombe Power Figure, Congo, Burdened Fetish. Size: 12" x 4" x 9" (30 x 10 x 23 cm). Provenance: Max Garb, Chicago, Illinois. **\$100-200**



235

236. Yombe Female Figure on a Turtle, Congo, carved wood. Size: 14" x 4" x 6" (36 x 10 x 15 cm). Provenance: Max Garb, Chicago, Illinois. **\$100-200**



236



237

237. Carved Lidded Urn, Luba People, D.R. Congo. Size: 12" x 11" x 7" (30 x 28 x 18 cm). Provenance: Max Garb, Chicago, Illinois. **\$100-200**

238. Fang Reliquary Figure. Size: 21" x 6.5" x 7" (53 x 17 x 18 cm). Provenance: Max Garb, Chicago, Illinois. **\$100**



238



239

239. Fang Reliquary Figure. Size: 30" x 10" x 10" (76 x 25 x 25 cm). Provenance: Max Garb, Chicago, Illinois. **\$100**

240. West African Ram's Head Mask, Baule, Size: 12" x 15" x 6" (30 x 38 x 15 cm). Provenance: Max Garb, Chicago, Illinois. **\$100-200**



240



241

241. Kota Reliquary Guarding Figure, copper clad. Size: 25.5" x 10.5" x 3" (65 x 27 x 8 cm). Provenance: Max Garb, Chicago, Illinois. **\$100-200**

242. Carved Mask w/ Monkey Crown. Yaure. Size: 14.25" x 5.5" x 3.5" (36 x 14 x 9 cm). Provenance: Max Garb, Chicago, Illinois. **\$100-200**



242



243

243. Carved Chokwe mask w/ Jute Hair. Size: 11" x 6.75" x 10" (28 x 17 x 25 cm). Carved Mask- Braided Sisal Hair. Size: 9" x 7" x 8" (22 x 18 x 20 cm). Provenance: Max Garb, Chicago, Illinois. **\$100-200**

244. Terra Cotta Mask. Size: 13.25" x 5.5" x 5" (34 x 14 x 13 cm). Carved Mask- Bun Hair. Size: 11" x 7" x 5" (28 x 18 x 13 cm). Provenance: Max Garb, Chicago, Illinois. **\$100-200**



244



245

245. Two African Heddle spools, carved wood. Size: 5.5" x 2.25" x 1.5" (14 x 6 x 4 cm). Size: 8" x 3.5" x 2" (20 x 9 x 5 cm) and 8" x 3.5" x 2" (20 x 9 x 5 cm). Provenance: Max Garb, Chicago, Illinois. **\$100-200**



246



247

246. Vintage Tabwa Helmet Mask, carved wood, patina, cowrie shell. Size: 12" x 13" x 13" (30 x 33 x 33 cm). Spired Gola Helmet Mask, Liberia. Size: 25" x 9" x 9" (63.5 x 23 x 23 cm). Chokwe Carved Helmet Mask. Size: 12" x 14" x 14" (30 x 36 x 36 cm). Provenance: Max Garb, Chicago, Illinois. **\$200-300**

247. Luba Headrest, Zaire, carved wood, Woman on Antelope, Size: 6.5" x 6" x 3" (17 x 15 x 8 cm). Double Head, Size: 7.5" x 2.5" x 2" (19 x 6 x 5 cm.) 2 women in embrace, Size: 8" x 7" x 3" (20 x 18 x 8 cm). Provenance: Max Garb, Chicago, Illinois. **\$100-200**



248



249

248. African Fetish Doll, carved wood, fabric, sanguine. Size: 6.75" x 3.25" x 3.5" (17 x 8 x 9 cm). Pagan Mask-Fawn. Size: 10.5" x 5" x 4.5" (27 x 13 x 11 cm). Dogon Tellem Chief's funeral head. Red volcanic Stone Size: 9" x 3" x 6" (23 x 8 x 15 cm). Provenance: Max Garb, Chicago, Illinois. **\$100-200**

249. White mask w/ Raffia Hair. Size: 20" x 8.25" x 6" (51 x 21 x 15 cm). Painted and Carved Kuba Mask/ Raffia Hair. Size: 10" x 6" x 1.75" (25 x 15 x 4 cm). Carved and Painted Mask w/ Metal Bangles. Size: 19" x 10" x 3" (48 x 25 x 8 cm). Provenance: Max Garb, Chicago, Illinois. **\$100-200**



250



251

250. Three Vintage African Masks, carved wood. Sizes: 20" x 8" x 7" (50 x 20 x 17 cm). 12" x 9" x 4" (30 x 22 x 10 cm). 12" x 8" x 4" (30 x 20 x 10 cm). Provenance: Orest Pawluk. **\$100-200**

251. Four Vintage African Carved Masks. Size: 8" x 6" x 4.5" (20 x 15 x 11 cm). Dogon Carved Mask. Size: 7" x 6.75" x 4" (18 x 17 x 10 cm). Carved Mask-Sleepy Figure. Size: 11" x 7" x 5" (28 x 18 x 13 cm). Painted and Carved Mask. Size: 10" x 6.5" x 2.5" (25 x 17 x 6 cm). Provenance: Max Garb, Chicago, Illinois. **\$200-300**



252



253

252. West African Comb. Size: 7.75" x 2" x 1.5" (20 x 5 x 4 cm). Asante Akua'Ba Fertility Figure. Size: 10.75" x 5" x 1.25" (27 x 13 x 3 cm). Carved fetish. Size: 4" x 1.75" x 1" (10 x 4 x 2.5 cm). West African Fertility Figure. Size: 17" x 4" x 4" (43 x 10 x 10 cm). Provenance: Max Garb, Chicago, Illinois. **\$100-200**

253. Yellow Ashanti Cloth, strip woven. Gold Dust Pattern, small holes, 40-50 years old. Size: 2'8" x 6'4" (81 x 192 cm). Provenance: a Gentleman in California. **\$100-200**



254

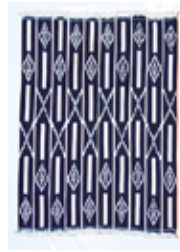


255

254. Indigo & Red Crosses Pattern, Heavy Handspun Cotton, Vai or Mewnde, Sierra Leone, 40-50 years old. Size: 4'6" x 5'8" (137 x 172 cm). Provenance: a Gentleman in California. **\$300-400**

255. Kuba Cloth, Raffia. Very good condition. Size: 2'2" x 9'6" (66 x 289 cm). Provenance: a Gentleman in California. **\$150-250**

256. Baule Cloth, Ivory Coast, natural indigo, strip woven. Small patch of light brown soiling. 40-50 years old. Size: 3'8" x 5'0" (111 x 152 cm). Provenance: a Gentleman in California. **\$100-200**



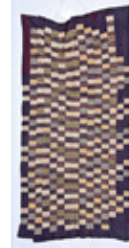
256



257

257. Fine West African Fulani Textile, early 20th c, natural dyes, hand spun cotton, narrow strip loom. Size: 3'9" x 5'9" (114 x 175 cm). Provenance: a Gentleman in California. **\$100-150**

258. Ashanti Cloth, early to mid 20th c, narrow strips sewn together in a dynamic and playful pattern. Size: 4'1" x 8'10" (124 x 269 cm). Provenance: a Gentleman in California. **\$150-200**



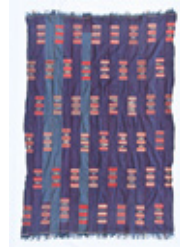
258



259

259. Ashanti Cloth, mid 20th c. Size: 5'10" x 9'0" (177 x 274 cm). Provenance: a Gentleman in California. **\$150-200**

260. Ewe Cloth, indigo with red, light yellow, light blue weft inserts. Strip woven, Togo or Benin, 40-50 years old. Size: 4'3" x 6'4" (129 x 192 cm). Provenance: a Gentleman in California. **\$200-300**



260



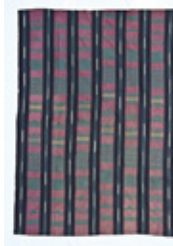
261

261. Vintage Ivory Coast Textile. Narrow strip loom, stripes. Size: 5'0" x 8'7" (152 x 261 cm). Provenance: a Gentleman in California. **\$100-200**

262. Yoruba Scholar's Robe, Nigeria, mid 20th c. Indigo with white embroidery, some wear at neckline. Size: 4'2" x 7'9" (127 x 236 cm). Provenance: a Gentleman in California. **\$200-300**



262



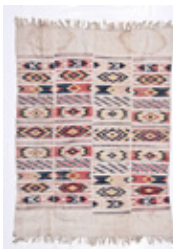
263

263. Yoruba Cloth, Nigeria, mid 20th c, narrow strip weave, sewn panels. Size: 4'6" x 6'5" (137 x 195 cm). Provenance: a Gentleman in California. **\$150-200**

264. West African Folk Textile, hand-spun white cotton with painted brown animal images. Size: 2'8" x 3'11" (81 x 119 cm). Provenance: a Gentleman in California. **\$100-200**



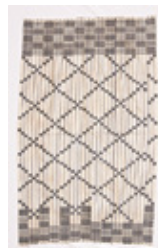
264



265

265. Nigerian Igbo Textile, mid 20th c, chevrons, sewn in 4 panels. Size: 5'0" x 6'7" (152 x 200 cm). Provenance: a Gentleman in California. **\$150-250**

266. Ashanti Woman's Wrap, Ghana, mid 20th c. Size: 3'3" x 5'1" (99 x 154 cm). Provenance: a Gentleman in California. **\$100-200**



266



267

267. Berber or Tuareg Textile, cotton and wool, mid 20th c. Size: 3'2" x 5'5" (96 x 165 cm). Provenance: a Gentleman in California. **\$100-200**



268



269

268. Old Kuba Textile, raffia. Size: 1'7" x 1'9" (48 x 53 cm).
Provenance: a Gentleman in California. **\$50-75**

269. Large West African Textile, early to mid 20th c, very fine weave, natural dyes. Size: 7'5" x 9'0" (226 x 274 cm). **\$200-300**



270



271

270. Hmong Embroidery, Blue Agricultural Scene. Size: 2'11" x 4'4" (89 x 131 cm). Provenance: a Gentleman in California. **\$100-150**

271. Hmong Embroidery, Blue Village Scene. Size: 2'7" x 4'0" (78 x 121 cm). Provenance: a Gentleman in California. **\$100-200**



272



273

272. Orange-red, brown, blue, green Thai women's skirt with horses and Tree of Life imagery, silk and cotton. Size: 1'8" x 12'9" (50 x 388 cm). Provenance: a Gentleman in California. **\$100-200**

273. Indian Wedding Shawl, early to mid 20th c, red madder ground with yellow, green, white embroidery, silk and cotton. Size: 4'6" x 6'10" (137 x 208 cm). Provenance: a Gentleman in California. **\$200-400**



274



275

274. Orange-red Indian Cloth, 2 strips attached together, with people and houses. Top half darker red; bottom half lighter. Size: 3'10" x 4'4" (116 x 131 cm). Provenance: a Gentleman in California. **\$150-250**

275. Laos, Xam Nena wall-hanging by Tai Deng Ethnic Group, mid 20th c. Embroidery on red silk background. Size: 1'5" x 6'6" (43 x 198 cm). Provenance: a Gentleman in California. **\$100-150**



276



277

276. Indian Kantha Textile, circa 1900, indigo ground cloth with golden/yellow silk embroidery, mirrors, very good condition. Size: 2'7" x 11'0" (78 x 335 cm). Provenance: a Gentleman in California. **\$300-500**

277. Sumba Ikat, mid 20th c. Size: 1'10" x 6'10" (55 x 208 cm). Provenance: a Gentleman in California. **\$100-200**



278



279

278. Orissa Folk Embroidery, India. Size: 3'8" x 5'0" (111 x 152 cm). Provenance: a Gentleman in California. **\$200-300**

279. American Flag Quilt. Size: 2'2" x 2'8" (66 x 81 cm). Provenance: a Gentleman in California. **\$100-150**



280

280. Inuit Blanket, 20th c, green wool with sealskin applique. Size: 2'11" x 2'0" (89 x 60 cm). Provenance: a Gentleman in California. **\$100-200**

281. Bhutanese Kira Textile. Early to mid 20th c. Size: 4'5" x 8'0" (134 x 243 cm). Provenance: a Gentleman in California. **\$150-250**



281



282

282. Fine Indonesian Ikat, early to mid 20th c, natural dyes, cotton. Size: 4'3" x 7'7" (129 x 231 cm). Provenance: a Gentleman in California. **\$300-400**

283. Guatemalan Embroidery, 20th c, bright colors, red, orange, yellow, green, dark blue. Size: 2'9" x 3'3" (83 x 99 cm). Provenance: a Gentleman in California. **\$100-200**



283



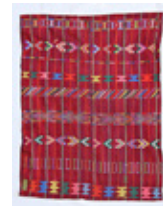
284

284. Navajo or Mexican Rug, early 20th c. Size: 3'1" x 4'7" (93 x 139 cm). **\$100-200**

285. Navajo Chinle "Bald Eagle" Rug, 20th c, natural dyes. Size: 2'5" x 2'10" (73 x 86 cm). Provenance: a Gentleman in California. **\$200-300**



285



286

286. Guatemalan Folk Textile, 20th c. Size: 2'10" x 3'9" (86 x 114 cm). **\$50-100**

287. Brown Felted Textile, 20th c, neolithic image. Size: 2'7" x 3'5" (78 x 104 cm). Provenance: a Gentleman in California. **\$100-200**



287



288

288. Old Iturbi Bark Cloth Drawing, Namibia. Size: 1'6" x 2'0" (45 x 60 cm). Provenance: a Gentleman in California. **\$100-200**

289. Amish Quilt, Center Diamond, Circa 1900, Lancaster County. Size: 79" x 79" (200 x 200 cm). Provenance: GlaxoSmithKline LLC. **\$300-600**



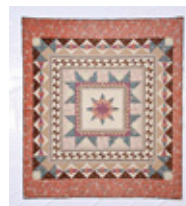
289



290

290. The North Carolina Pink Ribbon Quilt designed and made by Sandhill Quilters Guild, Spring 2000 to Honor Breast Cancer victims. Size: 62" x 82" Provenance: GlaxoSmithKline LLC. **\$50-100**

291. Jane Blair (American, 20th c), My Medallion, 1975. Handmade cotton fiber quilt. Size: 92.5" x 81.5" (234 x 207 cm). Provenance: GlaxoSmithKline LLC. **\$100-200**



291



292

292. Navajo Germantown Blanket, circa 1880, excellent condition. Size: 4'2" x 6'1" (127 x 185 cm). Provenance: GlaxoSmithKline LLC. **\$4000-8000**

293. Small Navajo Rug, 20th c. Size: 2'4" x 3'0" (71 x 91 cm). Provenance: a Gentleman in California. **\$200-300**



293



294



295



296



297



298



299



300



301



302



303



304



305



306



307



308

294. Fine Antique Continental White Lace. Size: 57.5" x 98" (146 x 248 cm). **\$100-200**

295. Navajo Pictorial Weaving, 20th c, village scene with cows. Size: 1'5" x 3'0" (43 x 91 cm). Provenance: a Gentleman in California. **\$200-300**

296. Vintage American Hooked Rug, 20th c. Size: 3'2" x 5'3" (38 x 160 cm). **\$50-100**

297. Antique Chinese Silk Embroidery. Size: 45" x 130" (114 x 330 cm). **\$300-500**

298. Antique Chinese Embroidered Silk Garment Patch. Size: 12" x 14" x 1" (30 x 35 x 2 cm). **\$100-150**

299. Pair of 19th C. Embroidered Turkish Sashes, silk on cotton, excellent condition. Size: 7.5" x 82" (19 cm x 208 cm) and 9.5" x 82" (24 cm x 208 cm). **\$200-300**

300. 19th C. Asian Silk Embroidery, floral sprays, very good condition. Size: 56" x 120" (143 cm x 305 cm). **\$300 -500**

301. Kashmir Shawl, India, 19th C, black center, inscription. Size: 6'6" x 6'6" (198 x 198 cm). **\$400-600**

302. Kashmir Shawl, India, 19th C, black center, inscription. Size: 5'11" x 5'10" (180 x 177 cm). **\$400-800**

303. Kashmir Shawl, India, 19th C, black center, holes, inscription. Size: 6'0" x 6'5" (182 x 195 cm). **\$400-600**

304. Victorian Paisley Shawl, 19th c. Size: 5'1" x 10'7" (154 x 322 cm). **\$200-300**

305. Victorian Paisley Shawl, 19th c. Size: 5'4" x 5'3" (162 x 160 cm). **\$200-300**

306. Victorian Paisley Shawl, 19th c. Size: 5'0" x 10'10" (152 x 330 cm). **\$200-300**

307. Victorian Paisley Shawl, 19th c. Size: 5'6" x 5'2" (167 x 157 cm). **\$200-300**

308. Victorian Paisley Shawl, 19th c. Size: 4'7" x 10'2" (139 x 309 cm). **\$200-400**

309. Large Bolt of Cut Velvet Brocade Fabric. Size: 4'9" x 59'10" (144 x 1823 cm). **\$100-300**



309



310

310. Large Bolt of Cut Velvet Brocade Fabric. Size: 4'9" x 33'0" (144 x 1005 cm). **\$100-200**

313. Silk Kimono Jacket with embroidered Dragon, Japan, early 20th c. Size: 57 x 60 inches (144 x 152 cm). **\$50-100**



313



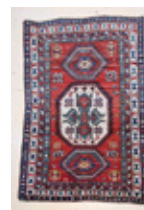
314

314. Kazak Rug, Caucasus, late 19th c. Size: 3'6" x 6'6" (106 x 198 cm). **\$400-600**

315. Kazak Rug, Caucasus, circa 1900. Size: 4'1" x 7'1" (124 x 215 cm). **\$600-900**



315



316

316. Lori Pambak Kazak Rug, Caucasus, circa 1900. Very good overall condition, recently cleaned. Size: 6'8" x 9'8" (203 x 294 cm). Provenance: a Philadelphia, Pennsylvania estate. **\$5000-7000**

317. Caucasian Style Hall Rug, modern, natural dyes. Size: 5'2" x 10'0" (157 x 304 cm). Provenance: Michaelian Kohlberg. **\$600-900**



317



318

318. West Persian Style Kurd Rug, modern, natural dyes. Size: 4'1" x 9'2" (124 x 279 cm). Provenance: Michaelian Kohlberg. **\$600-900**

319. Afshar Style Rug, 20th c, natural dyes. Size: 2'8" x 4'10" (81 x 147 cm). Provenance: Michaelian Kohlberg. **\$150-250**



319



320

320. Kazak Rug, Caucasus, late 19th c, extensive wear. Size: 4'8" x 8'3" (142 x 251 cm). **\$300-500**

321. Bidjar Style Rug, 20th c, natural dyes. Size: 6'0" x 8'9" (182 x 266 cm). Provenance: Michaelian Kohlberg. **\$1000-1500**



321



322

322. Turkish Milas Rug, late 19th c, old repairs, worn, frayed ends. Size: 41" x 62.5". **\$200-300**

323. Four Antique Oriental Rugs, including 1) Tekke, Size: 3'2" x 3'4" (96 x 101 cm); 2) Afshar, Size: 1'9" x 3'5" (53 x 101 cm); 3) Daghestan Prayer Rug, Size: 3'2" x 5' (96 x 152 cm); 4) Belouch, Size: 2'10" x 4'5" (86 x 134 cm). **\$200-300**



323



324

324. Kazak Rug, Caucasus, late 19th c, heavy wear. Size: 3'3" x 5'5" (99 x 165 cm). **\$200-400**



325



326



327



328



329



330



331



332



333



334



335



336



337

325. Four Small Antique Oriental Rugs, including a pair of West Persian Kurdish Bags, Size: 1'9" x 3'5" (53 x 104 cm); a Turkish Pillow, Size: 1'4" x 1'9" x 5" (40 x 53 x 12 cm); a Turkish Yastik, Size: 1'6" x 2'9" (45 x 83 cm); a Shiraz Kilim, Size: 2'1" x 1'10" (63 x 55 cm). **\$250-350**

326. Hamadan Pictorial Rug. Size: 4'9" x 7'6" (144 x 228 cm). **\$200- 300**

327. Beluch Prayer Rug, 20th c. Size: 2'11" x 4'7" (88 x 139 cm). **\$100-200**

328. Afghan War Rug, 1980's, excellent condition. Size: 2'2" x 2'6" (66 x 76 cm). Provenance: a Gentleman in California. **\$100-150**

329. Two Antique Bidjar Rugs. Room-size: 9'0" x 11'7" (274 x 353 cm), patch on back with glue residue, some surface mothing. Small: 2'8" x 4'1" (81 x 124 cm), cut and pieced. **\$500-1000**

330. Three Antique Turkish Sparta Carpets. Sizes: 2'6" x 4'5" (76 x 134 cm); 2'9" x 5'0" (83 x 152 cm); 2'10" x 8'0" (86 x 243 cm). **\$100-200**

331. Bahktiari Rug, Persia, 19th c, old repairs, damages. Size: 8'10" x 11'0" (269 x 335 cm), shows wear. **\$400-600**

332. Sarouk Rug, Persia, 20th c, very good condition, full pile. Size: 9'0" x 12'0" (274 x 365 cm). **\$1500-2500**

333. European Rug, possibly Russian, circa 1900, woven in 2 sections. Size: 9'4" x 12'2" (284 x 370 cm). **\$200-400**

334. Heriz Rug, Persia, early 20th c, good overall condition. Size: 8'3" x 11'4" (251 x 345 cm). **\$2000-3000**

335. Tabriz Rug, Persia, 20th c. Size: 7'9" x 11'6" (236 x 350 cm). **\$500-1000**

336. Serapi Style Rug, possibly Bulgarian or Russian, mid 20th c, very good condition. Size: 10'0" x 11'0" (304 x 335 cm). **\$1000-1500**

337. Chinese Art Deco Rug, early 20th c. Size: 9'0" x 12'0" (274 x 365 cm). **\$1000-1500**

338. Bahktiari Carpet, Persia, circa 1900, slight buckle. Size: 6'7" x 10'0" (200 x 304 cm). **\$1000-1500**



338



339

339. Bakhatiari Rug, Persia, circa 1900. Size: 2'9" x 5' (83 x 152 cm). **\$400-600**

340. West Persian Carpet, late 19th c, areas of wear. Size: 8'6" x 12'6" (259 x 381 cm). **\$1500-2500**



340



341

341. Afghan Ersari Rug, 20th c. Size: 8'10" x 11'7" (269 x 353 cm). **\$1000-2000**

342. Fine Agra Carpet, India, 20th c. Size: 9'0" x 12'0" (274 x 365 cm). Provenance: Michaelian Kohlberg. **\$2000-3000**



342



343

343. Fine Agra Carpet, India, 20th c. Size: 8'9" x 12'0" (266 x 365 cm). Provenance: Michaelian Kohlberg. **\$2000-3000**

344. Fine Agra Carpet, India, 20th c. Size: 9'0" x 11'1" (274 x 337 cm). Provenance: Michaelian Kohlberg. **\$2000-3000**



344



345

345. Sultanabad Style Carpet, 20th c, natural dyes, excellent color and condition. Size: 8'11" x 12'2" (271 x 370 cm). Provenance: Michaelian Kohlberg. **\$1500-2500**

346. Sultanabad Style Carpet, 20th c, natural dyes, excellent color and condition. Size: 8'10" x 11'11" (269 x 363 cm). Provenance: Michaelian Kohlberg. **\$2000-3000**



346



347

347. Mohtashem Kashan Style Carpet, modern, natural dyes. Size: 10'9" x 15'10" (327 x 482 cm). Provenance: Michaelian Kohlberg. **\$3000-5000**

348. Fine Persian Style Carpet, 20th c, natural dyes. Size: 11'1" x 16'6" (337 x 502 cm). Provenance: Michaelian Kohlberg. **\$3000-5000**



348



349

349. Fine Classical Agra Carpet, India, 20th c. Size: 11'9" x 17'6" (358 x 533 cm). Provenance: Michaelian Kohlberg. **\$3000-5000**

350. Outstanding Classical Agra Carpet, India, 20th c. Size: 14'3" x 16'1" (434 x 490 cm). Provenance: Michaelian Kohlberg. **\$4000-6000**



350



351

351. Tebriz Style Carpet, modern, natural dyes. Size: 7'9" x 10'1" (236 x 307 cm). Provenance: Michaelian Kohlberg. **\$1500-2500**



352



353

352. Tebriz Style Carpet, 20th c, overall pattern, natural dyes. Size: 7'10" x 9'10" (238 x 299 cm). Provenance: Michaelian Kohlberg. **\$2000-3000**

353. Khotan Style Carpet, modern, natural dyes. Size: 9'0" x 12'0" (274 x 365 cm). Provenance: Michaelian Kohlberg. **\$2000-3000**



354



355

354. Fine Agra Carpet, India, 20th c. Size: 9'2" x 13'0" (279 x 396 cm). Provenance: Michaelian Kohlberg. **\$2000-3000**

355. Hamadan Style Carpet, modern, natural dyes. Size: 8'6" x 11'6" (259 x 350 cm). Provenance: Michaelian Kohlberg. **\$700-1000**



356



357

356. Voysey Design Arts & Crafts Carpet, 20th c, natural dyes. Size: 7'9" x 12'6" (236 x 381 cm). Provenance: Michaelian Kohlberg. **\$1200-1800**

357. Bakshaish Style Carpet, modern, natural dyes, Tree of Life pattern. Size: 8'9" x 12'0" (266 x 365 cm). Provenance: Michaelian Kohlberg. **\$1500-2500**



358



359

358. West Persian Style Carpet, India, modern, natural dyes. Size: 6'0" x 8'11" (182 x 271 cm). Provenance: Michaelian Kohlberg. **\$600-900**

359. Sultanabad Style Carpet, 20th c, natural dyes, excellent color and condition. Size: 9'1" x 11'10" (276 x 360 cm). Provenance: Michaelian Kohlberg. **\$2500-3500**



360



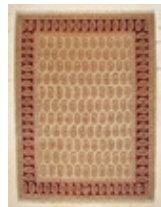
361

360. Fine Gold Ground Ferahan Carpet, India, modern, natural dyes, excellent color and condition. Size: 8'10" x 12'0" (269 x 365 cm). Provenance: Michaelian Kohlberg. **\$2500-3500**

361. Fine Tebriz Style Carpet, India, modern, natural dyes. Size: 9'0" x 12'2" (274 x 370 cm). Provenance: Michaelian Kohlberg. **\$2000-3000**



362



363

362. Fine Agra Carpet, India, 20th c. Size: 8'0" x 10'5" (243 x 317 cm). Provenance: Michaelian Kohlberg. **\$2000-3000**

363. Fine Agra Carpet, India, 20th c, overall repeat boteh pattern, natural dyes. Size: 9'2" x 12'3" (279 x 373 cm). Provenance: Michaelian Kohlberg. **\$1500-2500**



364

364. Fine West Persian Style Carpet, modern, natural dyes. Size: 9'0" x 12'0" (274 x 365 cm). Provenance: Michaelian Kohlberg. **\$2000-3000**

365. Fine West Persian Style Runner Rug, modern, natural dyes.
Size: 2'3" x 12'3" (68 x 373 cm). Provenance: Michaelian Kohlberg.
\$300-600

366. Tebriz Carpet, Persia, mid 20th c, full pile, excellent condition. Size: 12'6" x 9'4" (381 cm x 285 cm) Provenance: GlaxoSmithKline. **\$400-800**

367. Vintage West Persian Kilim, excellent condition. Size: 9'3" x 6'7" (282 cm x 201 cm). Provenance: GlaxoSmithKline LLC. **\$100-300**

368. Bokhara Rug, Pakistan, 20th c, full pile, excellent condition. Size: 8'10" x 6' (269 cm x 183 cm) Provenance: GlaxoSmithKline. **\$200-400**

369. Rare Mahindra Folk Rug, India, folk depiction of cows on a green field, lovely natural abrash. Size: 2'7" x 10'8" (78 x 325 cm). Provenance: Michaelian Kohlberg. **\$1000-1500**

370. Malayer Style Hall Rug, modern, natural dyes. Size: 2'9" x 12'0" (83 x 365 cm). Provenance: Michaelian Kohlberg. **\$700-1000**

371. Classical Indo-Persianate Rug, modern, natural dyes. Size: 4'7" x 13'2" (139 x 401 cm). Provenance: Michaelian Kohlberg. **\$1000-1500**

372. Tibetan "Cortez" Rug, 20th c. Size: 3'2" x 7'9" (96 x 236 cm). Provenance: Michaelian Kohlberg. **\$200-400**

373. Tibetan "Cortez" Rug, 20th c. Size: 3'3" x 12'1" (99 x 368 cm). Provenance: Michaelian Kohlberg. **\$500-700**

374. Arts and Crafts Rug, 20th c, natural dyes. Size: 2'8" x 9'10" (81 x 299 cm). Provenance: Michaelian Kohlberg. **\$400-600**

375. Tibetan Rug, 20th c, vines and berries. Size: 3'0" x 11'11" (91 x 363 cm). Provenance: Michaelian Kohlberg. **\$800-1200**

376. Tibetan Rug, 20th c. Size: 3'0" x 9'9" (91 x 297 cm). Provenance: Michaelian Kohlberg. **\$200-400**

377. Tibetan Rug, 20th c. Size: 2'10" x 7'10" (86 x 238 cm). Provenance: Michaelian Kohlberg. **\$200-400**

378. Tibetan Tiger Rug, 20th c. Size: 3'1" x 6'4" (93 x 193 cm). Provenance: Michaelian Kohlberg. **\$50-100**



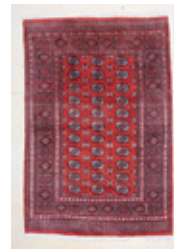
365



366



367



368



369



370



371



372



373



374



375



376



377



378



379



380

379. Tibetan Rug, 20th c, natural dyes. Size: 2'11" x 5'10" (88 x 177 cm). Provenance: Michaelian Kohlberg. **\$150-250**

380. Modernist Mahindra Rug, India, natural dyes. Size: 2'4" x 5'3" (71 x 160 cm). Provenance: Michaelian Kohlberg. **\$300-500**



381



382

381. Continental Style Carpet, 20th c. Size: 5'8" x 9'4" (172 x 284 cm). Provenance: Michaelian Kohlberg. **\$1000-1500**

382. Fine Tebriz Style Carpet, 20th c, natural dyes, excellent condition. Size: 8'9" x 12'2" (266 x 370 cm). Provenance: Michaelian Kohlberg. **\$1500-2500**



383



384

383. Fine European Style Floral Carpet, 20th c, natural dyes. Size: 8'0" x 10'4" (243 x 314 cm). Provenance: Michaelian Kohlberg. **\$1500-2500**

384. Hand Knotted European Style Floral Carpet. Size: 6'1" x 9'0" (185 x 274 cm). Provenance: Michaelian Kohlberg. **\$400-800**



385



386

385. Modernist Rug, natural dyes, excellent color and condition. Size: 5'11" x 8'4" (180 x 254 cm). Provenance: Michaelian Kohlberg. **\$800-1200**

386. Khotan Style Carpet, modern, natural dyes. Size: 5'11" x 8'10" (180 x 269 cm). Provenance: Michaelian Kohlberg. **\$400-800**



387



388

387. Fine "Caspian" Blue Rug, modern, natural dyes. Size: 5'8" x 8'6" (172 x 259 cm). Provenance: Michaelian Kohlberg. **\$600-900**

388. Fine "Caspian" Blue Rug, modern, natural dyes. Size: 5'10" x 8'9" (177 x 266 cm). Provenance: Michaelian Kohlberg. **\$600-900**



389

389. Aubusson Carpet, fine tapestry weave, 20th c. Size: 7'11" x 10'1" (241 x 307 cm). Provenance: Michaelian Kohlberg. **\$300-600**

390. Aubusson Carpet, fine tapestry weave, 20th c. Size: 5'10" x 8'11" (177 x 271 cm). Provenance: Michaelian Kohlberg. **\$200-400**



390



391

391. Aubusson Carpet, fine tapestry weave, 20th c. Size: 7'8" x 9'11" (233 x 302 cm). Provenance: Michaelian Kohlberg. **\$300-600**

392. Aubusson Carpet, fine tapestry weave, 20th c. Size: 7'8" x 10'5" (233 x 317 cm). Provenance: Michaelian Kohlberg. **\$300-600**



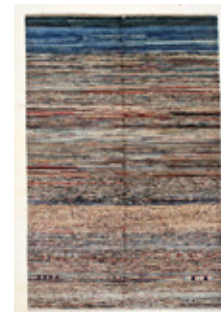
392



393

393. Modernist "Caspian" Carpet, natural dyes. Size: 5'8" x 9'4" (172 x 284 cm). Provenance: Michaelian Kohlberg. **\$400-800**

394. Modernist "Out of India" Carpet, natural dyes, excellent color and condition. Size: 6'0" x 8'11" (182 x 271 cm). Provenance: Michaelian Kohlberg. **\$1000-1500**



394



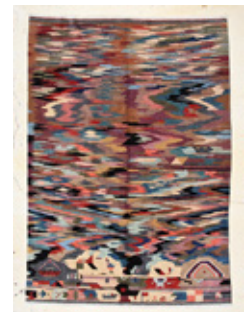
395

395. Moroccan Style "Granada" Shag Rug, modern, deep shag pile, excellent condition. Size: 6'9" x 8'9" (205 x 266 cm). Provenance: Michaelian Kohlberg. **\$900-1200**

396. Modernist "Kunlun" Rug, natural dyes. Size: 5'9" x 8'10" (175 x 269 cm). Provenance: Michaelian Kohlberg. **\$600-900**



396

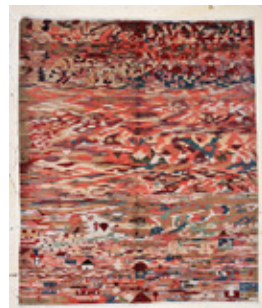


397

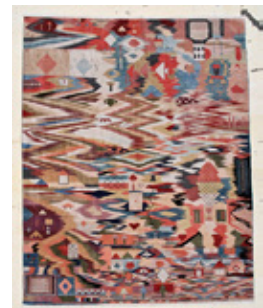
397. Fine "Caspian" Folk Rug, modern, natural dyes. Size: 5'9" x 8'1" (175 x 246 cm). Provenance: Michaelian Kohlberg. **\$600-900**

398. Fine "Caspian" Folk Rug, modern, natural dyes. Size: 6'4" x 7'7" (192 x 231 cm). Provenance: Michaelian Kohlberg. **\$600-900**

399. Fine "Caspian" Folk Rug, modern, natural dyes. Size: 7'0" x 8'9" (213 x 266 cm). Provenance: Michaelian Kohlberg. **\$800-1200**



398



399

Terms and Conditions of Sale

The property offered and sold through New Material Culture, Inc.'s (hereinafter MC) public auctions (hereinafter the Property) shall be offered and sold pursuant to the terms and conditions set forth below (hereinafter the Agreement). This Agreement constitutes the complete statement of the terms and conditions pursuant to which all Property is offered for sale. By bidding at the auction, whether in person, by agent, in writing, by telephone, internet bid or any other means, the buyer of the Property (hereinafter the Buyer) agrees to be bound by this Agreement.

PROPERTY SOLD AS IS. All Property is sold as is, where is, with all faults. Neither MC nor any consignor makes any guarantees, warranties or representations, expressed or implied with respect to the Property or the correctness of the catalogue or any other description of the Property. In no event shall MC or the consignor be responsible for the correctness, nor be deemed to have made any representation or warranty, of description, genuineness, authorship, attribution, provenance, period, culture, source, origin or condition of the Property. No statement made at the sale, or in the bill of sale, or invoice or elsewhere shall be deemed such a guarantee, warranty or representation.

WITHDRAWAL OF PROPERTY. MC reserves the right to withdraw any Property at any time for any reason and to default any sale in the event of an error or dispute.

COPYRIGHT AND REPRODUCTION RIGHTS. MC and its consignors make no warranty or representation, express or implied, that the Buyer will acquire any copyright or reproduction rights to any Property sold. MC expressly reserves the right to reproduce any image of the Property sold in the catalogue. The copyright in all images, illustrations and written material produced by or for MC relating to Property, including the contents of the catalogue, is, and shall remain at all times, the property of MC and shall not be used by the Buyer, nor by anyone else, without MC's prior written consent.

EXAMINATION OF PROPERTY. All Property is available for examination prior to bidding. The Buyer's bidding signifies that the Buyer has examined the Property as fully as desired or has chosen not to examine the Property. MC recommends that prospective bidders examine all items in which they have an interest prior to bidding.

BIDDING.

RESERVES. Some of the Property in the sale is offered subject to a reserve. The reserve is a confidential minimum price agreed upon by the consignor and MC below which the lot will not be sold. In most cases, the reserve will be set below the estimated range, but in no case will it exceed the estimates listed. If Property is offered with a reserve price the bidding will begin at that price. Otherwise, bidding will begin at a price appropriate in the auctioneer's discretion. The auctioneer always reserves the right to withdraw Property for any reason he deems appropriate. At the auctioneer's discretion, no bid of less than one half the low estimate will be accepted from any source, including but not limited to: phone bidding, absentee bidding, internet bidding or bidding in person at the auction.

ORDER OF BIDS. Unless otherwise announced by the auctioneer, all bids are per lot as numbered in the catalogue. MC reserves the right to determine any and all matters regarding the order, precedence or appropriate increment of bids or the constitution of lots.

ABSENTEE AND PHONE BIDDING. Absentee and phone bidding are permitted by prospective bidders who cannot be present at the auction. Please complete the Absentee Bid and/or Phone Reservation form. Absentee bids are executed competitively and confidentially. All reservations for phone bidding are held in the strictest confidence and must be received by 5 pm EST the day before the auction. No additional phone bids will be accepted at such time including additions when speaking with a staff person on the phone. Written absentee bids may be submitted on the Absentee Bid Form up to 30 lots before the item comes up for auction. Leaving an absentee or phone bid on a lot indicates your willingness to open the bidding at one half the printed estimate, and gives the auctioneer the authority to open the bidding at that level, or to open the bidding on a lot with a printed reserve at the reserve price. In the case of identical absentee bids, the bid received first will prevail. Bids left on liveauctioneers.com are not executed until the item is offered in the live auction and the order in which they are received is not a factor.

CUT BIDS. We do not accept cut bids, (bids less than the last interval) from the floor or from absentee bidders including phone and internet bidders. Thus, it is possible that a lot could go to another bidder for less than an absentee bid. For example, if the bids are progressing in \$10 dollar increments and an absentee falls at a \$5 increment we will not take the bid since it is less than the \$10 increment. Following are general guidelines for bidding increments:

\$0-\$100 by \$10 increments

\$100-\$500 by \$25 increments

\$500-\$1,000 by \$50 increments

\$1,000-\$3,000 by \$100 increments

\$3,000-\$5,000 by \$250 increments

\$5,000-\$10,000 by \$500 increments

\$10,000-\$30,000 by \$1,000 increments

\$30,000-\$50,000 by \$2,500 increments

\$50,000-\$100,000 by \$5,000 increments

\$100,000-\$200,000 by \$10,000 increments

Above \$200,000 auctioneer's discretion

HIGHEST BIDDER. The highest bidder as determined by the auctioneer shall be the Buyer. In the case of a disputed bid, the auctioneer shall have sole discretion in determining the Buyer and may also, at his or her election, withdraw the Property or reoffer the Property for sale. The auctioneer shall have sole discretion to refuse any bid, or refuse to acknowledge any bidder. At such time as the auctioneer has declared Property sold to a given Buyer, said Buyer thereupon assumes full risk and responsibility for the Property, agrees to sign any requested confirmation of purchase, and agrees to pay the full price, plus Buyer's Premium, therefore or such part, upon such terms as MC may require.

PAYMENT. Payment must be made by cash, approved check, wire transfer, Mastercard or Visa credit cards. MC reserves the right to require bank checks for purchases over \$5,000. Personal checks will be acceptable only if credit has been established with MC or if a bank authorization has been received guaranteeing a personal check. MC reserves the right to hold Property purchased by personal check until the check has cleared the bank. Buyer agrees to pay MC a handling charge of \$25.00 for any check dishonored by the drawee. MC reserves the right to not issue a Buyer's number or to withhold merchandise if appropriate credit has not been established. Credit arrangements must be made by the Friday prior to the day of auction so bank statements can be verified. Any bidder that plans on spending in excess of \$100,000 should make arrangements with the MC accounting department at least five (5) days in advance of the sale, as a deposit may be required to participate. All Property purchased must be paid for no later than 5 pm EST on the seventh business day following the sale. MC may impose, and the Buyer agrees to pay, a monthly interest charge of 1.5% of the purchase price of any Property not paid by the Buyer within thirty (30) days of the date of sale. MC reserves the right to rescind any sale of Property in the event payment is not received within thirty (30) days of sale.

BUYER'S PREMIUM. A Buyer's premium of 25% will be applied to the purchase price of all Property.

REMOVAL OF PROPERTY. All items must be picked up, or shipping arrangements made, within two weeks of the day of sale. Items not collected or shipped by the 15th day following the sale will incur storage fees at a rate of \$5.00 per lot per day regardless of the size or value of the lot. Items not collected by the 30th day following the sale may be sold by MC or sent by MC to a public warehouse at the sole risk of, and charge to, the Buyer and MC may prohibit the Buyer from participating, directly or indirectly, as a bidder or purchaser in any future sale. No Property may be removed from MC's premises until the Buyer has paid in full the purchase price including Buyer's premium. MC shall have no liability for any damage to Property left on its premises after the auction. A defaulting Buyer will be deemed to have granted and assigned to MC a continuing security interest of first priority in any Property or money of, or owing to such Buyer in MC's possession, and MC may retain and apply such Property or money as collateral security for the obligations due to MC. MC shall have all of the rights accorded a secured party under the Pennsylvania Uniform Commercial Code.

PACKING AND SHIPPING. Buyer agrees that packing and shipping are done at the Buyer's risk and that Buyer will pay in advance all packing expenses, materials, carrier fees and insurance charges. Shipping is the sole responsibility of the Buyer. MC will have no liability for any loss or damage to shipped items. Upon request, MC will provide a list of shippers who deliver to destinations within the United States and overseas.

TAXES. All purchases are subject to Pennsylvania sales tax unless the Buyer possesses a Pennsylvania sales tax exemption number. Exemption numbers from other states are accepted in Pennsylvania if presented with a business card or letterhead. Dealers, museums, and other qualifying parties can apply for a Pennsylvania exemption number prior to the auction. Buyer is responsible for any and all tariffs, taxes and assessments that might be made on the Property. International Buyers are responsible for tariffs, taxes, or assessments of shipped items to the Buyer's country.

IMPORT/EXPORT RESTRICTIONS. Some property that is sold at auction can be subject to laws governing export from the United States, such as items that include material from some endangered species. Import restrictions from foreign countries are subject to these same governing laws. Granting of licensing for import or export of Property from local authorities is the sole responsibility of the Buyer. Denial or delay of licensing will not constitute cancellation or delay in payment for the total purchase price of said Property.

BUYER'S BREACH. If the Buyer breaches any of its obligations under this Agreement, including its obligation to pay in full the purchase price of all Property for which it is the highest successful bidder, MC may exercise all of its rights and remedies under the law including, without limitation, (a) cancelling the sale and applying any payments made by the Buyer to the damages caused by the Buyer's breach, and/or (b) offering at public auction, without reserve, any lot or item for which the Buyer has failed to pay in full the purchase price, holding the Buyer liable for any deficiency plus all costs of sale.

GOVERNING LAW. These conditions of sale shall be governed by the laws of the Commonwealth of Pennsylvania (excluding the laws applicable to conflicts or choice of law). The Buyer agrees that any suit for the enforcement of this Agreement may be brought, and any action against MC in connection with the transactions contemplated by this Agreement shall be brought, in the courts of the Commonwealth of Pennsylvania or any federal court sitting therein. The Buyer consents to the nonexclusive jurisdiction of such courts and waives objections that it may now or hereafter have to the venue of any such suit.

AMENDMENTS TO TERMS AND CONDITIONS. No claimed modification or amendment of this Agreement on the part of any party shall be deemed extant, enforceable or provable unless it is in writing that has been signed by the parties to this Agreement. No course of dealing and no delay or omission on the part of MC in exercising any right under this Agreement shall operate as a waiver of such right or any other right and waiver on any one or more occasions shall not be construed as a bar to or waiver of any right or remedy of MC on any future occasion.

E=mc^a



Felipe Jesus Consalvos
sold on 5/5/12
for \$7300



Prince Twins Seven Seven
sold on 5/5/12
for \$7300



James Castle
sold on 5/5/12
for \$4100



Thangka, Tibet,
14th-16th Century
sold on 10/14/12
for \$46,000



Buddha, Ming Dynasty
sold on 5/26/12
for \$17,000



Ottoman Embroidery,
18th Century
sold on 5/26/12
for \$12,000



Kurdish Rug,
West Persia, circa 1800
sold on 10/14/12
for \$4750



Tibetan Tiger Rug,
19th Century
sold on 5/26/12
for \$4300



Samuel Robb
sold on 5/5/12
for \$35,000



Icon, Russia,
19th Century
sold on 5/5/12
for \$6800

Material Culture is dedicated to providing individualized attention to consignors, buyers and the artifacts up for sale throughout the entire auction process. Our expert staff works to stay up-to-date on the developments of the global market, and applies experience, attention and care from appraisal to promotion to final sale. Our long experience in the global art and antiques market contributes to the strong showing of buyers overseas as well as domestically, with educated bidders from 30+ countries regularly participating in our high-energy sales. Material Culture offers sellers a no-surprises, competitive low flat fee that takes into account all of the expenses associated with finding the best market for an item; there are no special add-on charges for photography, internet listings, insurance, etc. Material Culture aims to exceed expectations and make the auction experience the best it can be for both consignors and buyers.

Material Culture's exhibition galleries, nearly 20,000 square feet of spectacular, naturally-lit space, are housed under the same roof as Material Culture's 40,000+ square foot retail store and cafe, in the historic landmark Atwater Kent Radio Factory, only 10 minutes from Philadelphia's city center. This location is an easy, quick distance for either visitors or residents of the area, an advantage over auction houses far from a large metropolitan center. At the same time, our location provides abundant, free, hassle-free parking and easy access loading dock facilities, avoiding a problem that can plague auction houses in dense urban areas. Both exhibitions and auctions take place in Material Culture's spacious galleries, and participate in Philadelphia's status as a city of the arts. Material Culture has always believed that art is for everyone, and aims to make participation in the auction business easier and more accessible to a wide spectrum of the public, for the convenience of the local community, and to the benefit of collectors and enthusiasts worldwide.

Spring-Summer 2013 Auction Schedule

Sunday 4/14/13, 11 am **The GlaxoSmithKline Fine Art Collection** 500+ Lots



Benton Spruance



Lance Richbourg



Katherine Renninger



Moe Brooker



Stephen Woodburn



Karel Appel



Diane Burko



Sunday 4/28/13, 11 am
**The Max Garb Collection
of African & Ethnographic Arts**

Sunday 5/19/13, 11 am **May Estates Auction: Fine Art, Antiques & Decorative Arts**
Consignment deadline: 4/1/13



Folk Out Loud !

**From Timbuktu to Overtown
and The Great Beyond**
19th to 21st Century Art
& Roadside Findings

Auction

Sunday 5/26/13, 11AM

Exhibition

Wednesday 5/22/13 to
Saturday 5/25/13, 10AM-6PM

Reception

Saturday 5/25/13, 1PM-5PM
Live Music and Refreshments,
Open to the Public,
Unlimited Free Parking

left

Purvis Young (1943-2010)
Untitled (Leader of the Peoples), 1991
Assemblage with House Paint on Wood
Size: 8'4" x 4'4" x 2.75" (254 x 132 x 7 cm)
Provenance: Grumbacher-Viener collection

right

John L. Cromwell (1805-1873)
Cigar Store Indian with Hatchet, c. 1850
Carved and Painted Wood
Height: 7 ft. (213 cm)
Provenance: George & Sue Viener Collection



www.materialculture.com