

# material culture

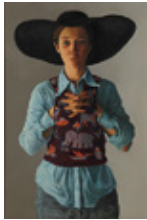
---



Sunday 5/19/13, 11 am

## **May Estates Auction**

**Fine Art, Antiques & Decorative Arts**



1



2



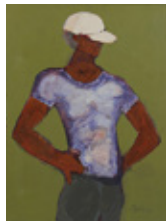
3



4



5



6



7



8



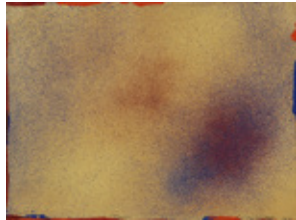
9



10



11



12



13



14

1. Deborah Deichler (American, b. 1948), Title on the reverse, "Lot's Wife" May 1978. Medium: Oil on Masonite. Framed. Size: 36" x 24". From an estate in Haverford, PA. **\$300-500**

2. George William Mote (British, 1832-1909). Medium: Oil on canvas. Size: 24" x 36" (stretcher); 31" x 43" (period wood frame). **\$6000-8000**

3. Richard Dey de Ribcowsky (American, 1880-1936). Seascape with Ship, 1911, signed lower right. Size: 16" x 20" (stretcher); 19" x 23" (period wood frame). **\$400-600**

4. Hudson River School Painting (American, 19th/20th c.). Medium: Oil on canvas. Size: 20.5" x 30" (stretcher); 27" x 36.5" x 3" (period carved wood frame). Condition: crackalure throughout. **\$500-700**

5. Oil Painting, signed "Hans Hofmann"; dated 1943, titled "Outer Mozart", oil on board. Size: 18" x 24" Board, 21.25" x 27.25" x 1" Frame. Provenance: property of a lady in Cherry Hill, New Jersey. **\$2000-4000**

6. Deryl Mackie (1949-2007) Painting. Size: 41" x 31". Framed in small 1/2" painted frame. From an estate in Haverford, PA. **\$200-400**

7. A. Falke (American, Early 20th C.) Portrait of a Man Smoking a Pipe and Reading The New York Herald, signed lower right. Medium: Oil on Canvas. Size: 27" x 21.75" (stretcher); 30.5" x 25.25" (wood frame). **\$300-500**

8. Salvador Dali Framed Lithograph "Dantes and Serants" with Certificate of Authenticity. Size: 21" x 16" (sight); 30.25" x 24.25" (metal sectional frame). **\$200-400**

9. Contemporary Watercolor, Man Entering Woods, Signed Manchester. Size: 8" x 9.5" Sight, 16" x 17.25" x 1" Frame. **\$30-50**

10. Sergio Gaggetta. Oil on canvas, framed. Venice scene. Size: 9.25" x 6.25" Sight, 16.25" x 13.25" x 2" Frame. **\$100-200**

11. Keith Ragone Monotype. Argus, 1981. Signed by the artist on reverse. Affixed label from the Marian Locks Gallery. Size: frame 32" x 24", sight 21" x 18". From an estate in Haverford, PA. **\$100-150**

12. Jules Olitski (American, 1922-2007) "Toora", 1986, screenprint in colors. Publisher: Institute of Contemporary Art, University of Pennsylvania, Philadelphia. Size: 30" x 38". From an estate in Haverford, PA. **\$400-600**

13. Dry point etching- signed illegibly. Size: 28" x 33". From an estate in Haverford, PA. **\$100-200**

14. Maurie Kerrigan (American, b. 1951) "Holy Cow," lithograph in colors, 1987. Size: 22" x 30". From an estate in Haverford, PA. **\$50-100**

**15. Mordechai Rosenstein Print. Solomon's Song of Songs #28/250. Medium: Serigraph Signed by the artist. Size: 20" x 24" frame, 14" x 18" sight \$50-100**



15

**16. Joseph Csaky (French, 1888-1971), Bronze Sculpture, from edition of 8. Size: 29" x 36" x 17.5". From an estate in Haverford, PA. \$5000-7000**



16

**17. French Art Deco Carved Glass Console Table. X-Form Steel Base Painted with Faux Burnish Finish. Size: 31" x 24" x 15". From a Haverford, PA estate. \$800-1200**



17



18

**18. Dennis Abbe Art Deco Revival Glass Fire Screen. Size: 51" x 60" x 15". Originally commissioned from the artist. From an estate in Haverford, PA. \$2000-3000**



19



20

**19. Safavid Style Tinned Copper ewer. Size: 17.25" x 13" x 7". From an estate in Haverford, PA. \$100-200**

**20. Two Safavid Style Tinned Copper Spouted Pots. Size: 15" x 8.5" x 5.5". From an estate in Haverford, PA. \$100 -200**



21



22

**22. Two Safavid Style Tinned Copper Twin Handled Jugs. Size: 12" x 10" x 7.5". From an estate in Haverford, PA. \$100-200**

**23. Antique Pair Heavy Brass Prickets. Lightly Engraved with family name and Archdiocese symbol. Size: 27" x 6" x 6" each. From an estate in Haverford, PA. \$200-400**



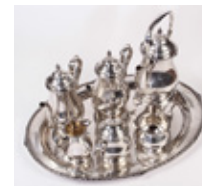
23



24

**24. Safavid Style Tinned Copper Lidded Urn. Size: 18" x 10" x 10". From an estate in Haverford, PA. \$100-200**

**25. Traditional English Sterling Silver Tea Service. Total weight approximately 240 oz. Ranging in Size from: 4" x 4" in diameter creamer, to 2" x 24" x 17.5" tray. From an estate in Haverford, PA. \$4000-6000**



25



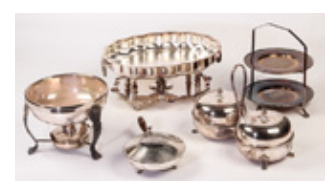
26

**26. Margo De Mexico Sterling Silver Tea Service. Total weight approximately 240 oz. Ranging in Size from: 3.5" x 4.5" x 3.25", to 16" x 10.5" x 6". From an estate in Haverford, PA. \$4000-6000**

**27. Mixed Group of Sterling Silver. Total Weighable Silver: 19 oz. Ranging in Size from: .75" x 2.75" in diameter, to 3" x 10" in diameter. From an estate in Haverford, PA. \$200-300**



27



28

**28. Five Piece Silverplate Service Group Lot. Ranging in Size from: 3.5" x 7.5" x 11.5", to 6.5" x 15.5" x 12". From an estate in Haverford, PA. \$200-300**

**29. Eight Pc Silverplate Service Group Lot. Ranging in Size from: 1" x 13.5" x 10", to 2" x 29" x 19". From an estate in Haverford, PA. \$200-300**



29





30



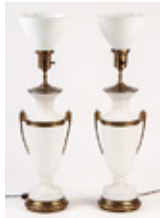
31



32



33



34



35



36



37



38



39



40



41



42



43

**30.** Large 24 Pc Silverplate Group Lot. Ranging in Size from: .5" x 3" x 3", to 1" x 21.75" x 14". From an estate in Haverford, PA. **\$200-300**

**31.** Egyptian Repousse Brass Brazier, early to mid 20th c. Size: 10" x 16.5" x 10.5". From the collection of a Virginia gentleman. **\$100-200**

**32.** Ivar Alenius Bjoerk. 2 Pair of candlesticks, Marked IAB. Made by Ystad Metall, Sweden. Size: 5" x 8.75" x 3". From a Philadelphia collection. **\$200-300**

**33.** Pair Italian Lamps- Martinelli Luce. Pipistrello table lamps with chrome and enamel base, white plastic shade. Adjustable height to 34". Size: 28" x 21" x 21" each. From a Haverford, PA estate. **\$700-900**

**34.** Pair Bronze Mounted Neo-Classical Milk Glass Lamps. Size: 30" x 8.5" x 8" each. From an estate in Haverford, PA. **\$200-300**

**35.** Figured Tulipwood Turned Bowl- signed Moulthrop. Losses to finish. Size: 9.5" x 15" x 15". From an estate in Haverford, PA. **\$200-300**

**36.** Jimmy (Key West) Wray. "Wormwood" Figural Wood Pedestal. Size: 35" x 11.25" x 11". From a Reading, PA collection. **\$200-300**

**37.** Jimmy Wray, Key West. Table- purpleheart Cuban mahogany free edge slab table atop geometric array base. Tree felled by Hurricane George. 2004. Size: 30" x 64.5" x 29 From a Reading, PA collection. **\$1000-2000**

**38.** Lot of 2 19th C Pennsylvania Windsor Chairs. Size: 1) 37" x 20" x 17"; 2) 30" x 18" x 19". From an estate in Haverford, PA. **\$200-300**

**39.** Queen Anne 18th c Tilt/Dish Top Candle Stand . Walnut, circa 1760-1770. Turned urn standard ending in snake feet. Size: 28" x 20" x 20". From an estate in Haverford, PA. **\$200-300**

**40.** Queen Anne 18th c Walnut Tilt Top Table. Dish top with a bird cage over turned urn pedestal and ending in snake feet. Circa 1760-1770. Size: 29" x 36" x 36". From an estate in Haverford, PA. **\$400-600**

**41.** Walnut Slant Front Desk. Delaware Valley c 1776. With quarter columns and ogee bracket feet. Tulip Poplar secondary wood. Size: 43" x 38.5" x 22". From an estate in Haverford, PA. **\$2500-3500**

**42.** Period Federal Cherry Wood Tall Chest, Pennsylvania. Tulip poplar secondary wood. Size: 68.5" x 42.5" x 22.5". From an estate in Haverford, PA. **\$3000-4000**

**43.** Five Piece Lot of Azure Field Cloisonne. Ranging in Size from: .5" x 3.75" x 3.75" to 2" x 4" x 3". From the collection of a Virginia gentleman. **\$100-150**

**44. Nine Piece Lot of Miscellaneous Cloisonne Articles. Ranging in Size from: 1.5" x 1" x 2.25" to 3.25" x 3.5" x 1.75". From the collection of a Virginia gentleman. \$100-150**



44

**45. Superb 10 Pc Lot of Chrysanthemum Cloisonne. Ranging in Size from: 1" x 2.5" x 1.5" to 7" x 7" x 7". From the collection of a Virginia gentleman. \$150-250**



45

**46. Nice 12 Pc Lot of Yellow Field Cloisonne. Ranging in Size from: 1" x 2.5" x 2.5" to 3" x 5" x 3.5". From the collection of a Virginia gentleman. \$100-200**



46

**47. Fine 10 Pc Lot of White Field Cloisonne. Ranging in Size from: .75" x 3.75" x 3.75" to 7.5" x 3" x 3". From the collection of a Virginia gentleman. \$400-600**



47

**48. Nice 12 Pc Lot of Emerald Field Cloisonne. Ranging in Size from: 1.75" x 1.5" x 1.5" to 12.5" x 5" x 5". From the collection of a Virginia gentleman. \$400-600**



48

**49. Exemplary 17 Pc. Lot of Black Field Cloisonne. Ranging in Size from: 1" x 2.5" x 1.5" to 9" x 5" x 5". From the collection of a Virginia gentleman. \$400-600**



49

**50. Large 32 Pc Lot of Rouge Field Cloisonne. Ranging in Size from: .75" x 3.75" x 3.75" to 8" x 6.5" x 6.5". From the collection of a Virginia gentleman. \$400-600**



50

**51. Fine 17 Pc Lot of Celadon Field Cloisonne. Ranging in Size from: 1.25" x 2" x 2" to 3" x 5.25" x 5.25". From the collection of a Virginia gentleman. \$400-600**



51

**52. Extensive 19 Pc Lot of Cobalt Field Cloisonne. Ranging in Size from: 1" x 2.5" x 2.5" to 6.5" x 4" x 4". From the collection of a Virginia gentleman. \$400-600**



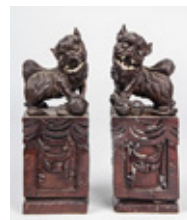
52

**53. Superb 24 Pc Lot of Turquoise Field Cloisonne. Ranging in Size from: .5" x 3" x 3" to 9" x 5" x 5". From the collection of a Virginia gentleman. \$400-600**



53

**54. Pair Carved Wood Foo Dogs. Glass eyes, bone teeth. Size: 10.5" x 3.75" x 3.75" From a Philadelphia collection. \$200-300**



54

**55. Manchu Dynasty Carved and Gilt Wood Figural Group. Carving of two figures and 3 legged frog. Once mounted as a lamp. Carved wood, paint, gilding and nacre chips. Paper label affixed on back possibly from an auction listing. Size: 12.5" x 5.5" x 4". From a Philadelphia collection. \$300-500**



55

**56. Superb 6 Pc Lot Chinese Temple Carvings. Relief carved wooden temple plaques and panels depicting various Chinese court scenes. Wood, paint, and gilding. Sizes ranging from 4" x 8" x 1.25" to 8" x 21" x 1.5" From a Philadelphia collection. \$400-600**



56

**57. Tall Chinese Relief Carved Bamboo Brush Pot. Size: 20.75" x 5.25" in diameter. \$100-200**



57



58



59



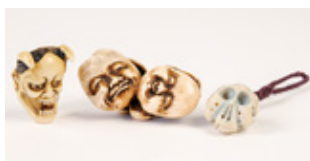
60



61



62



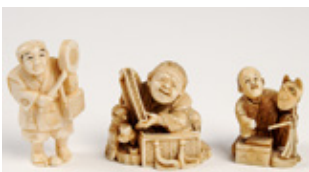
63



64



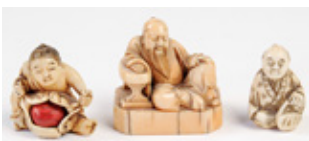
65



66



67



68



69



70

**58.** Two Japanese Woodblock Prints by Toyokuni in one frame. Size: 14" x 9.5" (each sight); 21.75" x 34.25" (wood frame). **\$150-250**

**59.** Hand Colored Asian Print. Boudoir Dressing Scene. Framed, marked. Marked "P.L.B. C16" Size: 11.75" x 8.75" Sight, 16.75" x 13.5" x 1" Frame. **\$50-100**

**60.** 2 Carved Ivory Ojime. Sizes: Largest: 1" x 1.5" in diameter. From the collection of a Pennsylvania gentleman. **\$20-40**

**61.** 2 Composite Items- Oxen Netsuke and Carved Mystery Ball. Sizes: 1) 1.25" x 2" x 1", 2) 2" in diameter. From the collection of a Pennsylvania gentleman. **\$30-40**

**62.** 2 Japanese Ivory Buttons- 1 w/ inset carved mouse, the other with Oni Mask. Sizes: 1) 2" in diameter, 2) 1.75" in diameter. From the collection of a Pennsylvania gentleman. **\$40-60**

**63.** 3 Carved Ivory Oni Netsukes. Sizes: Largest: 1" x 2" x 1". From the collection of a Pennsylvania gentleman. **\$40-60**

**64.** 2 Bone Netsukes- Carved Shell and Carved Bat (old losses). Sizes: 1) 1.75" x 2" x .5", 2) 1" x 1.75" x 1.25". From the collection of a Pennsylvania gentleman. **\$40-60**

**65.** 2 Japanese Carved Ivory Articles- Stamp and Mongoose Figure. Sizes: 1) 1.5" x .75" x .5", 2) 2" x .75" x .75". From the collection of a Pennsylvania gentleman. **\$40-60**

**66.** Three Pc Lot Carved Ivory Netsukes- Theater Figures. Sizes: Largest: 2" x 1.25" x .5". From the collection of a Pennsylvania gentleman. **\$50-100**

**67.** Three Pc Lot Carved Ivory Netsukes- Scholarly Figures. Size: Largest: 2" x 1.25" x .5". From the collection of a Pennsylvania gentleman. **\$50-100**

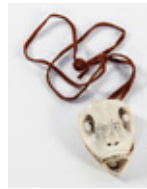
**68.** 3 Pc Lot Carved Ivory Netsukes- Scholarly Figures. Sizes: Largest: 1.25" x 1.5" x 1". From the collection of a Pennsylvania gentleman. **\$40-60**

**69.** Japanese pipe (Kiseru) case in figural carved sheath (Kiseruzutsu) in the shape of a bearded man with mouth agape and pendant figural (Daruma) tobacco box (Tonkotsu) in mixed woods, bamboo, fruitwood, and boxwood. Featuring brass and ivory fittings. The mouthpiece and bowl of the pipe are heavy brass castings featuring cranes in flight. Also, a kidney shaped brass bean (Ojime) hangs on the cord and features a bee on top and an inset silver plaque engraved with a maker's mark. Circa 1870. Size: 16" x 2.5" x 2.25" (41 x 6 x 6 cm). Provenance: Max Garb, Chicago, Illinois. **\$200-300**

**70.** Stan Hill (Canadian Mohawk Tribe, b. 1921), Signed Tortoise Shell Owl 1980. Size: 6" x 3.5" x 0.5" (15 x 9 x 1 cm). Provenance: Max Garb, Chicago, Illinois. **\$200-300**



**71.** Stan Hill (Canadian Mohawk Tribe, b. 1921), Signed Carved Skull 1980. Skull of unknown animal carved and transformed to another menacing figure's skull. Size: 2.5" x 2" x 1" (6 x 5 x 2.5 cm). Provenance: Max Garb, Chicago, Illinois. **\$200-300**



71

**72.** Stan Hill (Canadian Mohawk Tribe, b. 1921), Carved Skull - Signed, No Date. Skull cap of unknown animal transformed to stylistic talisman. Size: 2.5" x 2" x 1" (6 x 5 x 2.5 cm). Provenance: Max Garb, Chicago, Illinois. **\$200 -300**



72

**73.** Antique Chinese Export Porcelain Bowl. Size: 3.5" x 7.5" x 7.5". From an estate in Haverford, PA. **\$50-100**



73



74

**74.** Japanese Ceramic Bowl. Repaired. Size: 3" x 7" x 7". From an estate in Haverford, PA. **\$50-100**



75

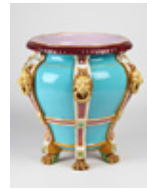


76

**75.** Pale Yellow Field Cloisonne Charger- Chrysanthemums. Size: 9" x 9" x 1". From a Philadelphia collection. **\$100-200**

**76.** 2 PC Bohemian Porcelain Plate Lot. Size: 7" x 7" x 1". **\$100-150**

**77.** Minton Majolica Lion Mask Jardiniere. Size: 17.5" x 19" x 19". From an estate in Haverford, PA. **\$200-300**



77



78

**78.** Minton Twin Handled Jardiniere on Balustrade Form Stand. Size: 47" x 16" x 12" overall. From an estate in Haverford, PA. **\$300-500**

**79.** Spelter and Bronze Figure- Girl in repose. Spelter figure on bronze base. Size: 6.5" x 6.5" x 3.75". **\$100-200**



79



80

**80.** Bronze Figure- Boy Among Fish. Size: 9.5" x 11" x 4.5". **\$300-500**

**81.** African Carved Stone Sculpture. Size: 11" x 3" x 5.5". **\$150-200**

**82.** Pair French Regimental Figurines. Drummer and Foot Soldier. The former bearing the mark of the crown over "N" and the latter the crown over "S" Size: 7.5" x 2" x 2". **\$150-250**



81



82

**83.** Weller Coppertone Style Frog Pitcher. Marked Weller on underside. Size: 8.5" x 13" x 5". **\$50-100**

**84.** Pair "Gay 90's" Gonder Arts Pail Carriers. Marked "copyright 1950, Gonder Ceramic Arts." Missing pails. Size: Man: 14" x 8" x 4", Woman: 14" x 8" x 5.5". **\$100-200**



83



84

**85.** 1930's French Chalkware Mantle Clock. Signed illegibly. Size: 16" x 11" x 6". **\$100-200**

**86.** 3 pc Mexican Pottery Lot- Catchall, 2 Vases. Various sizes up to 14.5" x 7" x 7". From an estate in Haverford, PA. **\$100-150**



85



86



87



88



89

**87. 2 Wedgwood Jasperware Pieces- Lidded Cake Plate, Footed Casserole. Sizes: 1) 11.5" x 10" x 10" ; 2) 4" x 8.5" x 8.5". From an estate in Haverford, PA. \$100-200**

**88. Mixed 3 PC Ceramic Lot- Delft Pitcher, Lidded Tureen, Continental Bud Vase. Ranging in size from 5.5" x 4.5" x 3" to 9" x 13" x 10". \$50-100**

**89. Pair Wedgwood Queen's Ware Vases- Barlaston Pattern. Size: 13" x 7.5" x 7.5". From an estate in Haverford, PA. \$50-100**



90



91



92

**90. Lalique Peacock. 14" x 9" x 4". From an estate in Haverford, PA. \$400-600**

**91. Lalique Swan. Size: 7" x 16" x 9". From an estate in Haverford, PA. \$500-700**

**92. Etched Glass Bowl with Fish, signed (Possibly Orrefores). Size: 6" x 7" x 7". \$100-200**



93



94



95

**93. 2 PC lot Art Glass Signed Hanson. Size: 6" x 5.5" x 5.5". \$150-250**

**94. Cobalt Glass Stoppered Decanter. Size: 13.5" x 4.5" x 4.5". \$50-100**

**95. 3 PC Lot Cut Glass - 2 Decanters, 1 Ewer. Ranging in size from 11" x 6" x 6" to 13.5" x 5" x 5". From an estate in Haverford, PA. \$100-200**



96



97



98

**96. End of Day Art Glass, Group of 3 Vessels. Size: Largest 11.5" x 5" x 5". \$150-250**

**97. Delaune Art Glass Vase. Size: 10.25" x 5" x 5". \$100-200**

**98. Cut Amberina Footed Glass Vase. Size: 10.5" x 7" x 7". \$300-500**



99



100



101

**99. Vaseline Glass Top Hat. Size: 6.5" x 9" x 7.5". \$200-300**

**100. 2 PC Glass Lot- Mercury and Onyx. Size: 3.5" x 11" x 11". \$50-100**

**101. Pressed Glass. Group of 3 Vessels. Size: 10.5" x 5.5" x 5.5". \$100-200**



102



103



104

**102. Fenton Amethyst Glass Compote and Basket. Size: 10" x 9" x 7" (largest). \$100-150**

**103. Murano Glass Compote Garniture. Compote and 2 Candlesticks. Size: 7.5" x 6.5" x 6.5". \$400-600**

**104. Pair of Venetian Glass Vases. Size: 9" x 4.5" x 4.5". \$200-300**



105



106

**105. 3 PC Carnival Glass Lot. Size: 5" x 12" x 10" (largest). \$100-150**

**106. 3 PC Wedding Basket Lot. Size: 7.5" x 8" x 7" (largest). \$300-500**



**107. 4 PC Boudoir Glass Lot.** Hobnob decanter, 2 dimpled glass vessels and a venetian glass bowl. Size: 7" x 4.5" x 4.5" (largest). **\$200-300**



107

**108. 3PC Loetz Glass Lot.** Amberina dimpled vase, cane glass bud vase and applied shallow bowl. Size: 6.5" x 3.5" x 3.5" (largest). **\$600-900**



108

**109. Art Glass Epergne Group.** Modern blown glass epergne and pressed glass sundae glass with applied crinkled rim. Size: 9.75" x 8" x 7". **\$100-200**



109

**110. Hand Painted and Signed Fenton Vase.** Size: 10.75" x 6" x 5". **\$100-200**



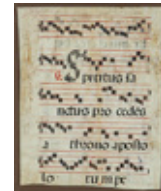
110

**111. Burmese Glass- Jack in the Pulpit Vase.** Size: 13" x 5.5" x 6". **\$200-300**



111

**112. Illuminated Manuscript. Medium: Ink on vellum.** Size: 18.25" x 14.5" (sheet); 25" x 21" (frame). **\$100-200**



112

**113. Haywood Hardy, Lithograph. Fox Hunt Scene.** Size: 22.5" x 28.5" (frame). **\$100-200**



113

**114. Hand-colored print, "Opening of the Centennial Exposition, May 10th 1876 - Scene on the Grand Plaza in front of Memorial Hall,"** London Illustrated News, May 25th, 1876. Size: 21.5" x 27.25" (frame), 15" x 20.5" (sight). **\$100-150**



114

**115. W. Dendy Sadler etching, published in London 1906, signed, framed.** Size: 15" x 11.25" (sight), 23.5" x 19.75" (frame). **\$100-150**



115

**116. Hand-colored print, "The Centennial-The Crush on Opening Day at the The Intersection of Elm and Belmont Avenues - Drawn by Schell and Hogan, Harpers Weekly, June 3rd, 1876 .** Size: 16 x 19.75 (frame), 10.25" x 14" (frame). **\$100-150**



116

**117. Hand-colored print, "Visit of Grand Commandery of the United States Knights Templars to the Exposition-The Column Passing The Masonic Temple in Broad Street, Philadelphia",** Historical Register of the Centennial Exposition. Size: 19.75" x 15.5" (frame), 14.25" x 9.75" (sight). **\$100-150**



117

**118. Hand-colored print, "The American Centennial Exhibition: one of the principal streets in Philadelphia" From The Illustrated London News, May 25th, 1876 .** Size: 15.75" x 19.5" (frame), 10.25" x 14" (sight). **\$100-150**



118

**119. Landscape Scene Engraving, Unknown Artist, ed. 350/74, framed.** Size: 17.25" x 13" (frame), 13.5" x 10.25" (sight). **\$100-150**



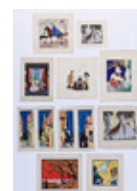
119

**120. Hand-colored print, "The Centennial- Knights Templar Parade in Philadelphia - From a Sketch by Theo. R. Davis, Harper's Weekly, June 24th, 1876. Size: 15.25" x 19.5" (frame), 10" x 14.25" (sight). **\$100-150****



120

**121. 10 PC Lot Pochoir Prints- Works by Nimoy, Chauvin, Chapuis, Miquette and Halouze. Ranging in Size from: 8"x 9", to 15" x 11". **\$100-200****



121



122



124



126



128



130



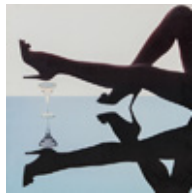
132



134



136



123



125



127



129



131



133



135



137

**122.** Mixed Lot Comics- Late 60's, Early 70's. 56 Comics. From a Philadelphia collection. **\$50-100**

**123.** Yuri Dojc. Czechoslovakian. Legs. Medium:Poster. Size: 27" x 27" . Provenance: GlaxoSmithKline LLC. **\$50 -100**

**124.** Hand Painted African American Plank Artwork. Colorful, intricately designed, with rich symbolism. It is well crafted, backed with both a plastic lining and canvas to protect from drying. Signed by artist (illegible). Measures 5' x 2'. **\$70-150**

**125.** Campaign Souvenir Lot- 7pcs. 2 offertory baskets, austere teak turned bowl, Saffron colored covered woven basket, pierced metal censer lid, Mandala medallion and campaign issue Looping anti-magnetic bronze alarm clock. Size: 1) 3" x 2.75" x 1" ; 2) 3" x 9.5" x 9.5". **\$100-200**

**126.** Antique Beaded Wall Pocket. Size: 3" x 5" x 9". **\$20-40**

**127.** Art Deco Stick Pin- Platinum, Gold Diamonds and Rubies. Possibly French. Marked illegibly starting with "DEPO" Size: 3" x .5" x .25". **\$300-500**

**128.** Vintage Military Locket Ring- Airborne Division. Opens to reveal tiny frame for loved one's photo. Marked sterling and stamped with patent number. Ring size: 10 Overall size: 1.25" x 1" x .75". **\$100-200**

**129.** Vintage Sterling Silver Military Locket Ring- Airborne Division. Opens to reveal tiny frame for loved one's photo. Marked Sterling and stamped with patent number. Ring size: 11.5 Overall size: 1.25" x 1" x .75". **\$100-200**

**130.** 4 MCM Curved Bentwood Bowling Alley Benches, excellent condition. Size: 31 x 72 37. **\$200-400**

**131.** Contemporary Butler's Tray Tea Cart. Size: 33" x 27.5" x 17". **\$50-100**

**132.** Autographed color photo of Gorbachev. Wood Frame under Plexi-glass. Size: 10.25" x 13.5" (sight); 18.5" x 22.5" x 1.75" (frame). **\$50-100**

**133.** Hand Painted "Lincolnshire" Lidded Porcelain Jar. Size: 11" x 11.5" x 9". From the collection of a Virginia gentleman. **\$50-100**

**134.** Carved and Painted Valet, wood. Size: 32.5" x 8" x 10". **\$100-150**

**135.** Early Carved Folk Ladle. Size: 22" x 2.5" x 6". **\$20-40**

**136.** 19th C Commode Chair- Wood grain painted. Nicely shaped arms in the Windsor style with lamb's ear shaped yoke. Size: 36.5" x 22.5" x 17". **\$100-200**

**137.** Estate Lot Coat Rack and Floor Lamp. Size: 59" x 16" x 16" (Side Table with Lamp); 68" x 19" x 19" (Hat and Coat Rack). **\$100-200**

**138.** Vintage "Antiques" Sign. Hand-painted and fashioned from a draft animal yoke. Size: 9.5" x 42" x 3.5". **\$100-150**



138

**139.** Dappled Metal Wall Pocket. Classical Relief Design. Size: 13" x 13" x 4". **\$40-60**



139

**140.** Old Queen Anne Style Kneehole Desk. Pecan Finish. Size: 31" x 41" x 20". From an estate in Haverford, PA. **\$100-200**



140



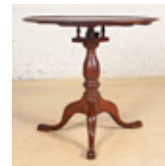
141

**141.** Pair Labeled Kittinger Night Stands. Size: 30" x 24" x 18". From an estate in Haverford, PA. **\$200-400**

**142.** 20th C Hepplewhite Style Dining Table. Inlaid Banded Top with Bell Flower Inlaid Marlborough Legs. Size: 31" x 60" x 17". **\$200-400**



142



143

**143.** Dish Top Birdcage Tea Table. Balustrade Form Column. Size: 27" x 30" x 30". **\$200-300**

**144.** Louis XV Style Wall Mounted Gilt Wood Console Table. Size: 31" x 26.5" x 10.5". **\$100-150**



144



145

**145.** Antique Hooded Pennsylvania Cradle. Wooden. Size: 26" x 40" x 22". **\$100-200**

**146.** Antique Wooden Cradle. Pierced heart shaped handles and lamb's ear detailing. Extended foot pedal for multitasking mother. Size: 18" x 36.5" x 24". **\$100-200**



146



147

**147.** Antique Hooded Pennsylvania Cradle. Blue milk paint. Size: 26.5" x 43" x 25". **\$100-200**

**148.** Antique Spindled Four Poster Cradle. Remnants of red milk paint. Size: 31" x 37" x 29". **\$100-200**



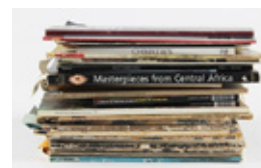
148



149

**149.** Rustic Painted Architectural Cupboard. Size: 88" x 30" x 20.5". **\$250-350**

**150.** Collector's Lot of Ethnographic Magazines and Exhibition Guides. Provenance: Max Garb, Chicago, Illinois. **\$20-50**



150



151

**151.** Haida Northwest Coast Carved and Painted Clapper. Carved faces on both sides. One side features a frog carved atop the brow. Nice patina. Size: 9.5" x 22.5" x 2.25". Provenance: Max Garb, Chicago, Illinois. **\$200-400**

**152.** Tlingit Headdress with Nacre Inlaid Fronlet. Carved and Painted Wood with Nacre Detailing. Cloth covered sub-frame embellished with ermine pelts. Size: 24" x 6" x 10". Provenance: Purchased by the collector from Allard Auctions in 1986. Max Garb, Chicago, Illinois. **\$500-1000**



152



153

**153.** Salish Northwest Coast Mask Signed Carl Larock, 1986. Carved and Painted Wood. Size: 8" x 7" x 4". **\$200-400**

**154.** Polychrome carved wood Santos figure with articulated arms. Size: 21" x 6" x 3" (53 x 15 x 7 cm). **\$50-100**



154



155

**155.** Figural Chip Carved Wood Shingle. Bearded Man. Size: 24.5" x 6.5" x .5". **\$50-100**





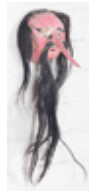
156



157



158



159



160



161



162



163



164



165



166



167



168



169



170



171

**156.** Figural Chip Carved Wood Shingle. Bearded Man.  
Size: 15" x 7.5" x .5". **\$50-100**

**157.** Lot 3 Iroquois False Masks Size: Provenance: Max Garb, Chicago, Illinois. Ranging in Size from: 10.5" x 6.5" x 4", to 11.5" x 7" x 6.25". **\$300-500**

**158.** Mexican Deer Dance Mask- Mascara. Red, Green and Yellow Painted wooden Mask with Hair. Size: 18" x 4.5" x 3". **\$200-300**

**159.** Guatemalan Festival Mask- Mascara. Pink Coconut Mask with Hair and Long Nose. Size: 17" x 5.5" x 6". **\$200-300**

**160.** Mexican Dance of the Negrito Mask- Mascara. From Mochitlan, Guerrero. Inscribed with description on reverse. Size: 14" x 5" x 3". **\$200-300**

**161.** Mexican Mask- Mascara. Dance of the suffering Moor. Carved and painted wood, coconut shell. Size: 4.5" x 4.5" x 5". Provenance: William Murray **\$50-100**

**162.** Primitive Mexican Butterfly Form Mask- Mascara. Dance of the Bat. San Francisco, Guerrero. Carved and painted wood. Size: 10" x 6.5" x 3.5". Provenance: William Murray **\$100-200**

**163.** Zoomorphic Mexican Festival Mask- Mascara. Bucktoothed Frog Mask with Horns. Carved and Painted Wood. Size: 12" x 9.5" x 8". **\$200-300**

**164.** Guatemalan Mask- Mascara. White and Red Painted Wood Mask. Size: 8.5" x 6" x 6". **\$100-200**

**165.** Mexican Festival Mask- Mascara. Hand Painted Wood Mask. Dance of Tlacololero from Amdonga Guerrero. Size: 11" x 7.5" x 6.5". **\$200-300**

**166.** Ape-like Wooden Mask with Articulated Jaw. Carved and painted wood. Applied hide with hair. Size: 6.5" x 6" x 3.5". **\$100-200**

**167.** Mexican Festival Mask of Nahual- Mascara. Dance of Nahual from Pinoleps, Oaxaca. Carved and Painted wood. Size: 8" x 9" x 5". **\$100-200**

**168.** Mexican Mask of Roldan- Mascara. Dance of the Christians and the Moors. From Puebla, Puebla. Size: 10.5" x 6" x 3.5". **\$100-200**

**169.** Mexican Mask of Roldan- Mascara. Bearded Male Mask. Dance of the Christians and the Moors. Size: 10" x 6.5" x 3.5". **\$100-200**

**170.** Mexican Animal Mask- Mascara. Red and White Painted Wood Mask. Size: 8" x 6" x 5". **\$100-200**

**171.** Mexican Fantasy Mask- Mascara. Abstract Wooden Mask with Figures and Reptile Heads. Dance of the "Siete Vicios" or seven deadly sins. From Guerrero. Carved wood and remnants of paint. Size: 10" x 7" x 6.5". Provenance: William Murray **\$200-300**

**172. Mexican Festival Mask- Mascara. Carved and Painted Wood.**  
Size: 9.5" x 8" x 4". **\$100-200**



172

**173. Mexican Dance Mask of Roldan- Mascara. Maroon Bearded Male Mask Dance of the Christians and the Moors.** Size: 10" x 7" x 4". **\$200-300**



173



174

**174. Mexican Mask of Roldan- Mascara. Dance of the Christians and Moors. From Puebla, Puebla. Carved and Painted Wood.** Size: 9" x 8" x 6". **\$100-200**

**175. Mexican Festival Mask- Mascara. Carved and Painted Wood.**  
Size: 7.5" x 6" x 4". **\$100-200**



175

**176. Metal Mexican Festival Mask- Mascara. Large Metal Feline Mask. Marked "Tierra Blanca 1914."** Size: 14" x 14" x 7". **\$200-300**



176



177

**177. Metal Mexican Mask- Mascara. Feline Mask. Marked "Tierra Blanca 1914"** Size: 7" x 9" x 4". **\$200-300**

**178. Mexican Zoomorphic Festival Mask. Large Fish Shaped Mask with Human Face. Guerrero. Carved and Painted Wood.**  
Size: 32" x 12" x 8". **\$200-300**



178



179



180

**179. Zoomorphic Mexican Festival mask- Mascara. Fish Shaped face Mask. Carved and Painted Wood.** Size: 20" x 11" x 7". **\$200-400**

**180. Mid 20th Century Mexican Viboras Mask- Mascara. Dance of the Tlacololeros. Carved Wood.** Size: 21" x 11" x 8". **\$200-300**

**181. Northwest Coast / Salish Style Totem Mask. Carved wood, bristle and fur, remnants of paint.** Size: 14" x 11.5" x 5.5".  
Provenance: William Murray **\$200-300**



181



182



183

**182. Indonesian Barong Naga Mask. Wood Carved Mask with Fangs.** Size: 21" x 14" x 8". Provenance: William Murray **\$200-300**

**183. Indonesian Leopard Mask. Carved and painted wood.**  
Size: 14" x 9" x 5". **\$100-200**

**184. Indonesian Barong Mask. Carved and Painted Wood. Monkey Form.** Size: 8.5" x 7" x 4". **\$100-200**



184



185



186

**185. Indonesian Mask. Painted and Carved Wood Mask.**  
Size: 8" x 6.5" x 5". **\$100-200**

**186. Indonesian Bejeweled Barong Metal Mask. Pave inlaid turquoise and coral jewels with bone eyes and wirework details.**  
Size: 8" x 7" x 2". **\$100-200**

**187. Lot 3 New Guinea Artifacts- 1 Mask and 2 Ancestry Boards.** Ranging in Size from: 14.5" x 11" x 4.5", to 35" x 7" x 3".  
Provenance: Max Garb, Chicago, Illinois. **\$200-300**



187

**188. Lot 2 New Guinea Artifacts- 1 Shield and 1 Ancestry Board.** Ranging in Size from: 31" x 9" x 1", to 44.5" x 7" x 1". Provenance: Max Garb, Chicago, Illinois. **\$200-300**



188



189



190



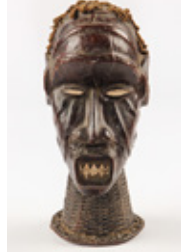
191



192



193



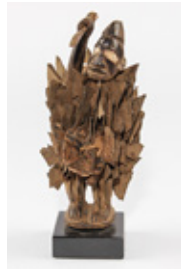
194



195



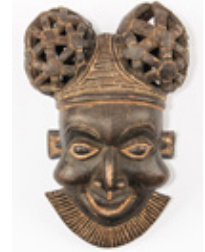
196



197



198



199



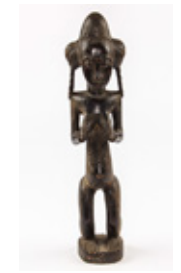
200



201



202



203



204



205

**189.** 2 New Guinea Ancestry Boards. Ranging in Size from: 41.5" x 9" x 1", to 43.5" x 10" x 1". Provenance: Max Garb, Chicago, Illinois. **\$200-300**

**190.** Collection of Six African and South American Ceramic Vessels, various ages. Various sizes ranging from 7" x 6" x 6" to 6.5" x 12" x 12". Provenance: Jane Steinsnyder. **\$300-500**

**191.** Moroccan Stoneware Pot. Size: 18.5" x 13" x 12". From an estate in Haverford, PA. **\$50-100**

**192.** African Fang Granary Door. Provenance: Max Garb, Chicago, Illinois. Size: 23.25" x 12" x 2". **\$200-400**

**193.** 2 Luba Memory Boards. Carved wood, paint and applied beads. Size: 16.5" x 8.5" x 3" and 17.5" x 8" x 6". Provenance: Max Garb, Chicago, Illinois. **\$200-300**

**194.** Ejagham Skin Covered Headdress. African. Tressed Carved Head on Woven Basketry Base. Size: 19" x 7" x 10". Provenance: Max Garb, Chicago, Illinois. **\$300-500**

**195.** African Mumuye Fertility Figure. Size: Provenance: Max Garb, Chicago, Illinois. Size: 34.5" x 9.5" x 10". **\$300 -500**

**196.** Fang Bieri Figure on Stand. Carved Wood. Size: 17" x 4" x 5". Provenance: Max Garb, Chicago, Illinois. **\$200 -300**

**197.** Kongo Nail Fetish. Carved Wood and Metal Shards. Size: Provenance: Max Garb, Chicago, Illinois. Size: 13.5" x 4" x 4". **\$200-300**

**198.** African Bambuti Fertility Figure. Molded and incised clay. Size: 8.25" x 5.5" x 4". Provenance: Max Garb, Chicago, Illinois. **\$100-200**

**199.** African Bamileke/Cameroon Mask. Carved and reticulated wood. Size: 19" x 13" x 8". Provenance: Max Garb, Chicago, Illinois. **\$200-300**

**200.** African Bambara Mask. Marka. Size: 28" x 9" x 7". Provenance: Max Garb, Chicago, Illinois. **\$200-400**

**201.** African Maternity Figure- Possibly Dogon. Size: 38" x 8" x 9". Provenance: Max Garb, Chicago, Illinois. **\$200-300**

**202.** Exemplary African Dengese Figure. Size: 39" x 5.5" x 6". Provenance: Max Garb, Chicago, Illinois. **\$300-500**

**203.** African Guro Fertility Figure. Carved Wood. Size: 27" x 5.5" x 4". Provenance: Max Garb, Chicago, Illinois. **\$200-300**

**204.** Lega Figure. Carved wood, pigment. Size: 34" x 7.5" x 7". Provenance: Max Garb, Chicago, Illinois. **\$200-300**

**205.** African Carved Wood Staff or Reliquary-- Possibly Chokwe. Size: 57.5" x 6.5" x 8.5". Provenance: Max Garb, Chicago, Illinois. **\$200-300**

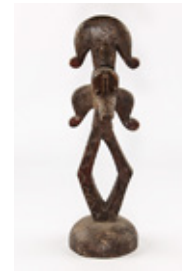


**206.** Bamileke Standing Mortar. Carved Wood Size: 33.5" x 9.5" x 7". Provenance: Max Garb, Chicago, Illinois. **\$200-300**



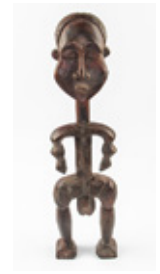
206

**207.** African Carved Wood Kota Reliquary. Size: 31.5" x 9.5" x 9". Provenance: Max Garb, Chicago, Illinois. **\$100 -200**



207

**208.** African Carved Wood Fertility Figure. Size: 32" x 8.5" x 2.5". Provenance: Max Garb, Chicago, Illinois. **\$100 -200**



208

**209.** Lot of 2 African Bulu Figures. Size: 16" x 5" x 7". Provenance: Max Garb, Chicago, Illinois. **\$200-300**



209

**210.** Lot of 2 African Colonial Figures- Possibly Igbo. Carved and Painted Wood. Provenance: Max Garb, Chicago, Illinois. Size: w/ stand: 19" x 5" x 3.5". **\$100-200**



210

**211.** African Colonial Carving- Portuguese Missionary. Size: 11" x 4" x 4". Provenance: Max Garb, Chicago, Illinois. **\$200-300**



211

**212.** African Benin Bronze Head. Size: 14" x 7" x 6.5". Provenance: Max Garb, Chicago, Illinois. **\$200-300**



212

**213.** African Benin Bronze Mask. Size: 12" x 6" x 4". Provenance: Max Garb, Chicago, Illinois. **\$100-200**



213

**214.** Three Pendants of Benin Bronze. Size: Provenance: Max Garb, Chicago, Illinois. Ranging in Size from: 5" x 3" x .5", to 9" x 5" x 2". **\$200-300**



214

**215.** Lot of 6 African Bronze Figures. Two pieces possibly Igbo. Four pieces possibly Dogon. Size: 6.5" x 2" x 7.5". Provenance: Max Garb, Chicago, Illinois. **\$200-300**



215

**216.** Stylized Curule Base Carved Wood Footstool Ashanti, mid 20th c. Size: 11" x 21.5" x 10.5". Provenance: William Murray **\$100-200**



216

**217.** African Leather Clad Drum With 2 Mallets. Size: 16" x 21" x 21". **\$100-200**



217

**218.** Two Baule Masks, Ivory Coast, mid 20th c. Sizes: 1) 14" x 6.5" x 5"; 2) 13" x 7" x 4.5". Provenance: estate of William Murray, Philadelphia. **\$200-300**



218

**219.** African Igbo Headdress. Brown Human Mask with Creature on Forehead and Chin. Carved and Painted Wood. Size: 23" x 8.5" x 7". Provenance: William Murray **\$200-400**



219

**220.** African Igbo Mask. Horned Human Mask. Carved and Painted Wood. Size: 11.5" x 7" x 5.5". **\$100-200**



220

**221.** Large Scale African Mask- Possibly Ibibio. Carved wood, fiber and applied metal sheets. Size: 18.5" x 14" x 9.5". Provenance: William Murray **\$200-300**

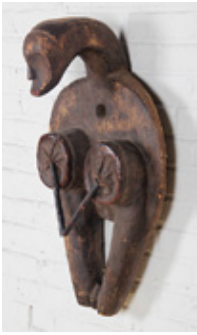


221

**222.** African Salampasu Mask. Large Wood Carved Mask. Size: 21" x 11.5" x 9". **\$200-300**



222



223



224



225



226



227



228



229



230



231



232



233



234



235



236



237

**223.** Carved African Fang Bellows, early 20th c, female form, carved wood, leather. Size: 29.5 x 17 x 11 inches. Provenance: estate of William Murray, Philadelphia. **\$200-300**

**224.** African Dan Tribe Fetish Mask. Wood Carved Crocodile with Headdress and Tin Accents. Size: 29" x 13" x 7". Provenance: William Murray **\$200-300**

**225.** Mid 20th Century African Igbo Mask. Carved and painted wood. Size: 22.5" x 10" x 7". **\$100-200**

**226.** Framed African Kuba Textile. Size: 1'8" x 1'8" (50 x 50 cm); Frame: 23" x 33" (58 x 83 cm). Provenance: a gentleman in Oregon. **\$100-150**

**227.** Framed African Kuba Textile. Size: 1'7" x 1'7" (48 x 48 cm); Frame: 23" x 33" (58 x 83 cm). Provenance: a gentleman in Oregon. **\$100-150**

**228.** Framed African Kuba Textile. Size: 1'8" x 1'8" (50 x 50 cm); Frame: 23" x 33" (58 x 83 cm). Provenance: a gentleman in Oregon. **\$100-150**

**229.** African Indigo Cloth with Beads, narrow strip loom, handspun cotton, excellent condition. Size: 82" x 40.5". **\$100-200**

**230.** West African Woman's Wrap, Burkina Faso; handspun cotton, narrow strip loom, natural dyes. Size: 70 x 51.5 inches. Provenance: William Murray **\$100-200**

**231.** Ivory Coast Strip Woven Blanket, early 20th c, hand spun cotton, indigo dyes, excellent condition. Size: 4'6" x 8'9" (137 x 266 cm). Provenance: Jane Steinsnyder. **\$300-400**

**232.** Two Silk Aleppo Tapestries, silk and metal thread. Syria, early 20th c. Size: 3'5" x 7'9" (each). Provenance: Jane Steinsnyder. **\$150-250**

**233.** Three Indian Rajsthani Textiles, early 20th c. Size: 1) 1'10" x 2'; 2) 2'4" x 2'5"; 3) 2'2" x 3'2". Provenance: Jane Steinsnyder. **\$50-100**

**234.** Lot of 2 Antique Chinese Silk Dressing Gowns. Size: Largest: 53.5" x 78". **\$100-200**

**235.** Southeast Asian Headdress, possibly Yao, early 20th c, stand included. Size: 12" x 22" x 14" (headdress). Provenance: Jane Steinsnyder. **\$150-250**

**236.** "Timbuwarra" Guardian Figure, Southern Highlands, New Guinea, mid 20th c, woven natural fiber, pigments, stand included. Size: 38" x 15" (figure). Provenance: Jane Steinsnyder. **\$150-250**

**237.** Nomadic Persian Tent Band, 4" x 18'6" (1 x 563 cm) braiding at one end, excellent condition. **\$100-200**



**238.** Kuba Raffia Panel, Congo, early 20th c. Size: 2'1" x 12'5" (63 x 378 cm). Provenance: Jane Steinsnyder. **\$200 -300**



238

**239.** Old Tapa Cloth, New Guinea, bark, natural pigments. Size 1'10" x 8'7" (55 x 261 cm). Provenance: Jane Steinsnyder. **\$150-250**



239

**240.** Grey Hills Rug; Circa 1900. Size: 4' x 6'. Provenance: A private collector from Michigan. **\$200-400**



240

**241.** Crystal Navajo Rug. Size: 4' x 7'. Provenance: A private collector from Michigan. **\$200-400**



241

**242.** Navajo Rug. Size: 3'9" x 5' (114 x 152 cm). Provenance: a gentleman in Oregon. **\$200-400**



242

**243.** Star Quilt, American, circa 1900, fraying. Size: 5'4" x 6'8" (162 x 203 cm). **\$50-100**



243

**244.** George Washington Hooked Rug, Lancaster County, Pennsylvania, modern. Size: 2'4" x 2'4". Weight: 2lbs. **\$100-200**



244

**245.** Fine Gabbeh Carpet, Persia, excellent color and condition; interpretation of Navajo design. Size: 6'2" x 9'2" (187 x 284 cm). Provenance: west coast collection. **\$600-900**



245

**246.** Gabbeh Carpet, Persia, ikat pattern, excellent color and condition. Size: 6'1" x 8'9" (185 x 266 cm). Provenance: west coast collection. **\$600-900**



246

**247.** Modernist Gabbeh Carpet, Persia, natural dyes. Size: 4'1" x 6' (124 x 152 cm). Provenance: west coast collection. **\$200-400**



247

**248.** Anatolian Carpet, Turkey, modern, excellent color and condition. Size: 7'11" x 9'11" (241 x 302 cm). Provenance: west coast collection. **\$1000-1500**



248

**249.** Anatolian Carpet, Turkey, modern, excellent color and condition. Size: 8' x 9'11" (243 x 302 cm). Provenance: west coast collection. **\$1000-1500**



249

**250.** Modernist Handwoven Hemp and Wool Carpet. Size: 4'10" x 8' (147 x 243 cm). Provenance: west coast collection. **\$200-400**



250

**251.** Sultanabad Style Carpet, Pakistan, modern, natural dyes. Size: 9'3" x 12' (281 x 365 cm). **\$1000-2000**



251

**252.** Sultanabad Style Carpet, Pakistan, modern, natural dyes. Size: 9'6" x 11'10" (289 x 360 cm). **\$1000-2000**



252

**253.** Indo Persian Carpet, handwoven, wool. Size: 2'6" x 9'10" (76 x 299 cm). **\$100-200**



253

**254.** Shirvan Prayer Rug, Caucasus, 19th c., wear, damages. Size: 3'10" x 4'9" (116 x 144 cm). Provenance: a gentleman in Oregon. **\$200-300**



254

**255.** West Anatolian Village Rug, Turkey, late 19th c, very good overall condition, old repair to kilim end. Size: 3' x 2'10" (91 x 86 cm). Provenance: Jane Steinsnyder. **\$1000-1500**



255





256



257



258



259



260



261



262



263



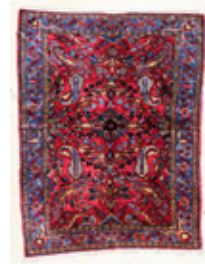
264



265



266



267



268



269



270



271



272



273

**256.** Two Antique Rugs, including a late 19th c. Turkish Kirshehir Prayer Rug and a southwest Persian bagface. Sizes: 5'9" x 3'3" and 1'9" x 2'2". Provenance: Philadelphia estate. **\$200-300**

**257.** Afshar-Neriz Rug, Persia, early 20th c. Size: 1'5" x 1'11" (43 x 58 cm). Provenance: a gentleman in Oregon. **\$200-400**

**258.** Afshar Bird Rug: 5'9" x 4'3", Persia, circa 1900. Provenance: a gentleman in Oregon. **\$200-400**

**259.** Beshir Jolar, Afghanistan, circa 1900, damages. Size: 5'1" x 3'3". **\$100-150**

**260.** Kiva Carpet, Afghanistan, late 19th c. Size: 6'11" x 7'5" (210 x 226 cm). Extensive wear. **\$100-200**

**261.** Shiraz Village Rug, Persia, circa 1900, areas of localized wear. Size: 5' x 6'5". Provenance: A private collector from Michigan. **\$200-400**

**262.** Caucasian Rug, circa 1900, fraying, localized wear. Size: 3'1" x 5'6". Provenance: A private collector from Michigan. **\$200-300**

**263.** Gabbeh Carpet, Persia, 20th c, lustrous handspun wool, minor end fraying. Size: 4'2" x 4'9" (127 x 144 cm). **\$100-200**

**264.** Gabbeh Carpet, Persia, 20th c. Size: 4' x 7'5" (121 x 226 cm). Provenance: west coast collection. **\$200-400**

**265.** Herati Carpet, Afghanistan, mixed flatweave and pile. Size: 4' x 6'6" (121 x 198 cm). Provenance: west coast collection. **\$200-300**

**266.** Silk Afghan Carpet. Size: 3'10" x 5' (116 x 152 cm). Provenance: west coast collection. **\$200-400**

**267.** Lilihan Carpet, Persia, circa 1920's. Generally good condition. Size: 5'1" x 6'8" (154 x 203 cm). Provenance: a gentleman in Oregon. **\$300-500**

**268.** Hamadan Carpet, Persia, mid 20th c. Size: 9'2" x 6'5". Provenance: Philadelphia estate. **\$100-200**

**269.** Iranian Hand Knotted Turkoman Rug. Size: 9'2" x 6'2". Weight: 33lbs. **\$200-400**

**270.** Chinese Peking Rug, circa 1900, generally good condition, fresh from a Philadelphia estate. Size: 11'6" x 8'10". **\$400-600**

**271.** Antique Sarouk Rug, circa 1900-1920, good estate condition, lustrous wool, mostly full pile with some lower areas: 10'10" x 13'4" (330 x 406 cm). **\$1000-2000**

**272.** Mahal Carpet, 20th c, evenly worn, overall pattern on ivory field. Size: 9'8" x 13'10" (294 x 421 cm). **\$1000-2000**

**273.** Palace Size Tebriz Rug, Persia, early 20th c., generally good estate condition with some areas of localized wear. Size: 23'0" x 13'7". **\$3000-4000**

**274.** Turkish Rubia Carpet, 20th c. Size: 9'4" x 7'3". **\$600-900**



274

**275.** Central Anatolian Village Rug, approx 30 years old, generally good condition but in need of wash. Size: 9'6" x 6'1". **\$200-400**



275

**276.** Two 19th C. Oriental Rugs, including a pictorial Turkish Kayseri rug and a Persian Gashgai rug, both heavily worn, damages. Sizes: 1) 7'0" x 5'0"; 2) 6'0" x 3'9". **\$100-200**



276

**277.** European Art Nouveau Period Carpet, worn with stains. Size: 11'6" x 8'11". Provenance: Philadelphia estate. **\$50-100**



277

**278.** Matched pair of Chinese Nichols Rugs. Size: 12'0" x 8'9" each. **\$400-800**



278

**279.** Two Room-Size Antique Carpets, including a central medallion west Persian carpet and an Ersari Main Carpet; heavy wear, damages. Size: 13'9" x 7'11". Provenance: Philadelphia estate. **\$100-200**



279

**280.** Antique Chinese Carpet. Size: 11'6" x 9'. Provenance: Philadelphia estate. **\$200-400**



280

**281.** Mohtashem Kashan, Persia, late 19th c. Pastel shades, kok wool, larges areas dry and cracking, heavy wear. Size: 19'4" x 12'10". **\$500-1000**



281



# E=mc<sup>a</sup>



**Felipe Jesus Consalvos**  
sold on 5/5/12  
for \$7300



**Prince Twins Seven Seven**  
sold on 5/5/12  
for \$7300



**James Castle**  
sold on 5/5/12  
for \$4100



**Thangka, Tibet,**  
14th-16th Century  
sold on 10/14/12  
for \$46,000



**Buddha, Ming Dynasty**  
sold on 5/26/12  
for \$17,000



**Ottoman Embroidery,**  
18th Century  
sold on 5/26/12  
for \$12,000



**Kurdish Rug,**  
West Persia, circa 1800  
sold on 10/14/12  
for \$4750



**Tibetan Tiger Rug,**  
19th Century  
sold on 5/26/12  
for \$4300



**Samuel Robb**  
sold on 5/5/12  
for \$35,000



**Icon, Russia,**  
19th Century  
sold on 5/5/12  
for \$6800

Material Culture is dedicated to providing individualized attention to consignors, buyers and the artifacts up for sale throughout the entire auction process. Our expert staff works to stay up-to-date on the developments of the global market, and applies experience, attention and care from appraisal to promotion to final sale. Our long experience in the global art and antiques market contributes to the strong showing of buyers overseas as well as domestically, with educated bidders from 30+ countries regularly participating in our high-energy sales. Material Culture offers sellers a no-surprises, competitive low flat fee that takes into account all of the expenses associated with finding the best market for an item; there are no special add-on charges for photography, internet listings, insurance, etc. Material Culture aims to exceed expectations and make the auction experience the best it can be for both consignors and buyers.

Material Culture's exhibition galleries, nearly 20,000 square feet of spectacular, naturally-lit space, are housed under the same roof as Material Culture's 40,000+ square foot retail store and cafe, in the historic landmark Atwater Kent Radio Factory, only 10 minutes from Philadelphia's city center. This location is an easy, quick distance for either visitors or residents of the area, an advantage over auction houses far from a large metropolitan center. At the same time, our location provides abundant, free, hassle-free parking and easy access loading dock facilities, avoiding a problem that can plague auction houses in dense urban areas. Both exhibitions and auctions take place in Material Culture's spacious galleries, and participate in Philadelphia's status as a city of the arts. Material Culture has always believed that art is for everyone, and aims to make participation in the auction business easier and more accessible to a wide spectrum of the public, for the convenience of the local community, and to the benefit of collectors and enthusiasts worldwide.



## **Terms and Conditions of Sale**

The property offered and sold through New Material Culture, Inc.'s (hereinafter MC) public auctions (hereinafter the Property) shall be offered and sold pursuant to the terms and conditions set forth below (hereinafter the Agreement). This Agreement constitutes the complete statement of the terms and conditions pursuant to which all Property is offered for sale. By bidding at the auction, whether in person, by agent, in writing, by telephone, internet bid or any other means, the buyer of the Property (hereinafter the Buyer) agrees to be bound by this Agreement.

**PROPERTY SOLD AS IS.** All Property is sold as is, where is, with all faults. Neither MC nor any consignor makes any guarantees, warranties or representations, expressed or implied with respect to the Property or the correctness of the catalogue or any other description of the Property. In no event shall MC or the consignor be responsible for the correctness, nor be deemed to have made any representation or warranty, of description, genuineness, authorship, attribution, provenance, period, culture, source, origin or condition of the Property. No statement made at the sale, or in the bill of sale, or invoice or elsewhere shall be deemed such a guarantee, warranty or representation.

**WITHDRAWAL OF PROPERTY.** MC reserves the right to withdraw any Property at any time for any reason and to default any sale in the event of an error or dispute.

**COPYRIGHT AND REPRODUCTION RIGHTS.** MC and its consignors make no warranty or representation, express or implied, that the Buyer will acquire any copyright or reproduction rights to any Property sold. MC expressly reserves the right to reproduce any image of the Property sold in the catalogue. The copyright in all images, illustrations and written material produced by or for MC relating to Property, including the contents of the catalogue, is, and shall remain at all times, the property of MC and shall not be used by the Buyer, nor by anyone else, without MC's prior written consent.

**EXAMINATION OF PROPERTY.** All Property is available for examination prior to bidding. The Buyer's bidding signifies that the Buyer has examined the Property as fully as desired or has chosen not to examine the Property. MC recommends that prospective bidders examine all items in which they have an interest prior to bidding.

### **BIDDING.**

**RESERVES.** Some of the Property in the sale is offered subject to a reserve. The reserve is a confidential minimum price agreed upon by the consignor and MC below which the lot will not be sold. In most cases, the reserve will be set below the estimated range, but in no case will it exceed the estimates listed. If Property is offered with a reserve price the bidding will begin at that price. Otherwise, bidding will begin at a price appropriate in the auctioneer's discretion. The auctioneer always reserves the right to withdraw Property for any reason he deems appropriate. At the auctioneer's discretion, no bid of less than one half the low estimate will be accepted from any source, including but not limited to: phone bidding, absentee bidding, internet bidding or bidding in person at the auction.

**ORDER OF BIDS.** Unless otherwise announced by the auctioneer, all bids are per lot as numbered in the catalogue. MC reserves the right to determine any and all matters regarding the order, precedence or appropriate increment of bids or the constitution of lots.

**ABSENTEE AND PHONE BIDDING.** Absentee and phone bidding are permitted by prospective bidders who cannot be present at the auction. Please complete the Absentee Bid and/or Phone Reservation form. Absentee bids are executed competitively and confidentially. All reservations for phone bidding are held in the strictest confidence and must be received by 5 pm EST the day before the auction. No additional phone bids will be accepted at such time including additions when speaking with a staff person on the phone. Written absentee bids may be submitted on the Absentee Bid Form up to 30 lots before the item comes up for auction. Leaving an absentee or phone bid on a lot indicates your willingness to open the bidding at one half the printed estimate, and gives the auctioneer the authority to open the bidding at that level, or to open the bidding on a lot with a printed reserve at the reserve price. In the case of identical absentee bids, the bid received first will prevail. Bids left on liveauctioneers.com are not executed until the item is offered in the live auction and the order in which they are received is not a factor.

**CUT BIDS.** We do not accept cut bids, (bids less than the last interval) from the floor or from absentee bidders including phone and internet bidders. Thus, it is possible that a lot could go to another bidder for less than an absentee bid. For example, if the bids are progressing in \$10 dollar increments and an absentee falls at a \$5 increment we will not take the bid since it is less than the \$10 increment. Following are general guidelines for bidding increments:

**\$0-\$100 by \$10 increments**

**\$100-\$500 by \$25 increments**

**\$500-\$1,000 by \$50 increments**

**\$1,000-\$3,000 by \$100 increments**

**\$3,000-\$5,000 by \$250 increments**

**\$5,000-\$10,000 by \$500 increments**

**\$10,000-\$30,000 by \$1,000 increments**

**\$30,000-\$50,000 by \$2,500 increments**

**\$50,000-\$100,000 by \$5,000 increments**

**\$100,000-\$200,000 by \$10,000 increments**

**Above \$200,000 auctioneer's discretion**

**HIGHEST BIDDER.** The highest bidder as determined by the auctioneer shall be the Buyer. In the case of a disputed bid, the auctioneer shall have sole discretion in determining the Buyer and may also, at his or her election, withdraw the Property or reoffer the Property for sale. The auctioneer shall have sole discretion to refuse any bid, or refuse to acknowledge any bidder. At such time as the auctioneer has declared Property sold to a given Buyer, said Buyer thereupon assumes full risk and responsibility for the Property, agrees to sign any requested confirmation of purchase, and agrees to pay the full price, plus Buyer's Premium, therefore or such part, upon such terms as MC may require.

**PAYMENT.** Payment must be made by cash, approved check, wire transfer, Mastercard or Visa credit cards. MC reserves the right to require bank checks for purchases over \$5,000. Personal checks will be acceptable only if credit has been established with MC or if a bank authorization has been received guaranteeing a personal check. MC reserves the right to hold Property purchased by personal check until the check has cleared the bank. Buyer agrees to pay MC a handling charge of \$25.00 for any check dishonored by the drawee. MC reserves the right to not issue a Buyer's number or to withhold merchandise if appropriate credit has not been established. Credit arrangements must be made by the Friday prior to the day of auction so bank statements can be verified. Any bidder that plans on spending in excess of \$100,000 should make arrangements with the MC accounting department at least five (5) days in advance of the sale, as a deposit may be required to participate. All Property purchased must be paid for no later than 5 pm EST on the seventh business day following the sale. MC may impose, and the Buyer agrees to pay, a monthly interest charge of 1.5% of the purchase price of any Property not paid by the Buyer within thirty (30) days of the date of sale. MC reserves the right to rescind any sale of Property in the event payment is not received within thirty (30) days of sale.

**BUYER'S PREMIUM.** A Buyer's premium of 25% will be applied to the purchase price of all Property.

**REMOVAL OF PROPERTY.** All items must be picked up, or shipping arrangements made, within two weeks of the day of sale. Items not collected or shipped by the 15th day following the sale will incur storage fees at a rate of \$5.00 per lot per day regardless of the size or value of the lot. Items not collected by the 30th day following the sale may be sold by MC or sent by MC to a public warehouse at the sole risk of, and charge to, the Buyer and MC may prohibit the Buyer from participating, directly or indirectly, as a bidder or purchaser in any future sale. No Property may be removed from MC's premises until the Buyer has paid in full the purchase price including Buyer's premium. MC shall have no liability for any damage to Property left on its premises after the auction. A defaulting Buyer will be deemed to have granted and assigned to MC a continuing security interest of first priority in any Property or money of, or owing to such Buyer in MC's possession, and MC may retain and apply such Property or money as collateral security for the obligations due to MC. MC shall have all of the rights accorded a secured party under the Pennsylvania Uniform Commercial Code.

**PACKING AND SHIPPING.** Buyer agrees that packing and shipping are done at the Buyer's risk and that Buyer will pay in advance all packing expenses, materials, carrier fees and insurance charges. Shipping is the sole responsibility of the Buyer. MC will have no liability for any loss or damage to shipped items. Upon request, MC will provide a list of shippers who deliver to destinations within the United States and overseas.

**TAXES.** All purchases are subject to Pennsylvania sales tax unless the Buyer possesses a Pennsylvania sales tax exemption number. Exemption numbers from other states are accepted in Pennsylvania if presented with a business card or letterhead. Dealers, museums, and other qualifying parties can apply for a Pennsylvania exemption number prior to the auction. Buyer is responsible for any and all tariffs, taxes and assessments that might be made on the Property. International Buyers are responsible for tariffs, taxes, or assessments of shipped items to the Buyer's country.

**IMPORT/EXPORT RESTRICTIONS.** Some property that is sold at auction can be subject to laws governing export from the United States, such as items that include material from some endangered species. Import restrictions from foreign countries are subject to these same governing laws. Granting of licensing for import or export of Property from local authorities is the sole responsibility of the Buyer. Denial or delay of licensing will not constitute cancellation or delay in payment for the total purchase price of said Property.

**BUYER'S BREACH.** If the Buyer breaches any of its obligations under this Agreement, including its obligation to pay in full the purchase price of all Property for which it is the highest successful bidder, MC may exercise all of its rights and remedies under the law including, without limitation, (a) cancelling the sale and applying any payments made by the Buyer to the damages caused by the Buyer's breach, and/or (b) offering at public auction, without reserve, any lot or item for which the Buyer has failed to pay in full the purchase price, holding the Buyer liable for any deficiency plus all costs of sale.

**GOVERNING LAW.** These conditions of sale shall be governed by the laws of the Commonwealth of Pennsylvania (excluding the laws applicable to conflicts or choice of law). The Buyer agrees that any suit for the enforcement of this Agreement may be brought, and any action against MC in connection with the transactions contemplated by this Agreement shall be brought, in the courts of the Commonwealth of Pennsylvania or any federal court sitting therein. The Buyer consents to the nonexclusive jurisdiction of such courts and waives objections that it may now or hereafter have to the venue of any such suit.

**AMENDMENTS TO TERMS AND CONDITIONS.** No claimed modification or amendment of this Agreement on the part of any party shall be deemed extant, enforceable or provable unless it is in writing that has been signed by the parties to this Agreement. No course of dealing and no delay or omission on the part of MC in exercising any right under this Agreement shall operate as a waiver of such right or any other right and waiver on any one or more occasions shall not be construed as a bar to or waiver of any right or remedy of MC on any future occasion.