

material culture



Lot 42. Yuan Silk Embroidered Thangka (detail)

Antique Textiles, Carpets and Ethnographic Arts

Featuring : The Bill Liske Collection of Antique
Tibetan Textiles, Carpets and Artifacts

Auction : Saturday, May 26, 2012 at 11 am

Preview : May 19 - May 25, 10 am-6 pm

4700 Wissahickon Avenue, Philadelphia, PA 19144

215-849-8030 | Open everyday 10-6pm

www.materialculture.com



Lot 14. Dharmapala (Wrathful Deity) Coral Dance Mask



Lot 1. Three Makonde Helmet Masks



1



2



3



4



5



6



7



8



9



10

1. Three Makonde Helmet Masks; Tanzania, mid 20th c, carved wood, hair, patina and scars. Prov: Philadelphia estate, purchased in the 1950's-1960's; 10" tall x 7" wide; \$800-1,200

2. Finely Carved Lobi Stool; West Africa, mid 20th c, old patina on dense, heavy wood; 28" wide x 7" tall x 7" deep; \$300-500

3. Finely Carved Lobi Stool; West Africa, mid 20th c, old patina on dense wood; 7.5" tall x 20" wide x 4" deep (19cm x 51cm x 10cm); \$300-500

4. Songye Statue; Congo, mid 20th c, Carved wood, pigments, cloth, hide, metal, organic horn. Prov: Philadelphia estate, purchased in the 1950's-1960's; 34" tall (86cm); \$200-300

5. African Anthropomorphic Earthenware Vessel; Burkina Faso, early to mid 20th c, bulbous body with undulating surface, lid; 30" tall x 17" diameter; \$400-600

6. Chimu Blackware Stirrup Vessel; Peru, 900-1100 ce, h: 11" (28cm); 11" tall (28cm); \$200-300

7. Mochica Mask; Peru, 200-500 ce; h: 4" (10cm), silver, red pigment; \$200-300

8. Felt and Goat Hide Shaman/Story-Tellers Mask; Tibet, late 19th-early 20th c. Prov: Bill Liske; 46" tall x 25" wide (117cm x 64cm); \$2,000-3,000

9. Nepali Middle Hills Mask; Nepal, 18/19th c, carved wood, animal fur. Prov: Bill Liske; 9.5" tall x 7.5" wide; \$1,600-2,400

10. Nobleman's Dance Mask; Tibet, 18/19th c, polychrome, carved wood. Prov: Bill Liske; 9.5" tall x 9" wide; \$2,000-2,500

11. Dharmapala (Wrathful Deity) Dance Mask; Tibet/Bhutan, 19th c or earlier, polychrome, paper mache, fabric. Prov: Bill Liske; 12" tall x 14" wide (31cm x 36cm); \$2,000-3,000



11



12

12. Dharmapala (Wrathful Deity) Dance Mask; Tibet/Bhutan, 19th c or earlier, polychrome, paper mache, fabric. Prov: Bill Liske; 12" tall x 11" wide (31cm x 28cm); \$2,000-3,000

13. Shaman Skull With Silver Inlay; Tibet, 18th c or earlier, human skull with silver decoration, silver inlay through the interior, lidded; 9" tall x 6" diamter (23cm x 15cm); \$2,000-4,000



13



14

14. Dharmapala (Wrathful Deity) Coral Dance Mask; Mongolia, early 20th c, polychrome, paper mache, fabric, embellished in coral; 18" tall x 17" wide (48cm x 43cm); \$6,000-8,000



15



16

15. Painted Manuscript Cover; Tibet, 18th c, polychrome wood; 30" wide x 10" tall (76cm x 25cm); \$3,000-4,000

16. Tibetan Saddle; Tibet, 18/19th c, wooden saddle with silver and brass relief and silk brocade; 11" tall x 20" wide x 25" deep (28cm x 51 cm x 64 cm); \$4,000-6,000



17



18

17. Repousse Makara Head; Tibet, 17th-18th c;; Height: 8"; \$3,000-4,000

18. Cast Bronze Arm; Tibet, 14th c; Length: 14"; \$2,000-3,000

19. Cast Copper Hand; Tibet, 14th c; Length: 14"; \$2,000-3,000



19



20

20. Silver Gilt Lion's Head; Tibet, 17th c; Height: 8"; \$4,000-6,000

21. Cast Bronze Budhisativa Head; Tibet, 18th c; Height: 3"; \$1,500-2,000



21



22

22. Pair of Repousse Dancing Figures; Western Tibet, 12th c; 13.5" tall x 6.5" wide (34cm x 17cm); \$6,000-8,000



23



24

23. Black Lacquer Box; China, 17th c; 11" tall x 15" wide x 8" deep (28cm x 38cm x 20cm); \$4,000-5,000

24. Carved Wood and Jade Screen; China, early 20th c, white jade; 13.5" tall x 12" wide x 5" deep (34cm x 31 cm x 13 cm); \$800-1,200



25



26

25. Black Lacquer Sign; China, 17th-18th c; 11"x3'11"; \$8,000-12,000

26. Japanese Thangka; Japan, circa 1900; \$600-900



27



28

27. Tibetan Padmasambhava Thangka; Tibet, 18th/early 19th c, flanked by his two wives and set in a landscape setting with scenes from his life. Prov: Christies New York, Indian and Southeast Asian Art, Sept 17, 1999, lot 153; 27 1/2" x 20" (69cmx51cm) ; \$4,000-6,000

28. Pair of Brass Indian Deities; South India, 19th c; Height:3.5"; \$400-600



29



30

29. Pair of Luristan Bronze Finials; Iran, 8th c BCE; Height: 8", 6"; \$1,000-1,500

30. Three West African Wood Carvings; Two early 20th c Ashanti fertility figures, one Nigerian ceremonial bell in female form, carved wood. Purchased in the 1960's; Height: 13",16",14"; \$300-500



31



32

31. Pair of Pre Columbian Pechera Panels; Peru, 400-800CE, ceremonial chest ornaments, feathers, cotton, wool, sewn and mounted on a stretcher; 15"x7"; \$1,000-1,500

32. Three Kuna Dolls; Panama, San Blas Islands, early 20th c, carved polychrome wood, stands; Height: 12",7",9"; \$100-200



33



34

33. Nepali Middle Hills Mask; Nepal, 19th c or earlier, carved wood; \$600-900

34. Tibetan/Nepali Carved Wood Durga; 16-17th c, carved polychrome wood figure of Durga and Shakti; Height: 12"; \$600-900

35. African Carved Ivory Horn; Early 20th c, on stand. Prov: Philadelphia estate, purchased in the 1950's-1960's; 1'11" length x 3" diameter; **\$300-500**



35

36. African Carved Ivory Horn; Gabon, early 20th c; length: 1'7"; **\$300-500**



36

37. Ming Carved Gilt Buddha; China or Tibet, 16th c, carved wood, gilt; Ht: 25"; **\$4,000-5,000**



37

38. Rare Liao or Jin Silk Textile Fragment; Tibet, 10th-13th c, silk, white with gold phoenix shield pattern, red monastery stamp. Provenance: Bill Liske; 10" x 26" (25cm x 66cm); **\$1,600-2,000**



38

39. Rare Liao or Jin Silk Textile Fragment; Tibet, 10th-13th c, silk, light blue with gold phoenix pattern. Provenance: Bill Liske; 1'11" x 1' (58cm x 30cm); **\$1,200-1,600**



39

40. Rare Liao or Jin Silk Textile Fragment; Tibet, 10th-13th c, silk, red with gold dragon roundels. Prov: Bill Liske; 12" x 21" (30cm x 53cm); **\$1,600-2,000**



40

41. Yuan or Ming Calligraphic Textile; Tibet, Yuan or Ming d, lantsa mantra silk and gold thread. Prov: Bill Liske; 1'0" x 0'7.5" (30cm x 19cm); **\$1,000-1,500**



41

42. Yuan Period Tibetan Thangka; Tibet, silk floss embroidery, seated Buddha. Literature: HALI magazine, issue 169, Tom Cole, "Tale From the Hills" Prov: Bill Liske; 0'10" x 1'3" (25cm x 38cm); **\$4,000-6,000**



42

43. Yuan Period Embroidered Mandala; Tibet, Yuan d, silk embroidered mandala. Prov: Bill Liske; 1'7" x 1'7" (48cm x 48cm); **\$2,000-3,000**



43

44. Tashi Taki Embroidery; China, Yuan d, silk floss on silk ground. Prov: Bill Liske; 11" x 1'9" (28cm x 53cm); **\$2,500-3,000**

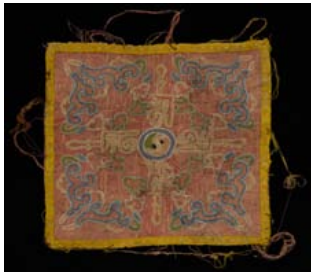


44

45. Gold on Gold Safavid Silk Fragment; Persia, 17th c, rare "frog foot" pattern. Literature: HALI magazine, issue 169, Tom Cole, "Tale From the Hills". Prov: Bill Liske; 7" x 1'7" (18cm x 48cm); **\$800-1,200**



45



46



47



48



49



50



51



52



53



54



55

46. Early Ming Silk Embroidered Panel; Tibet, early Ming d, small loop or chain stitch silk embroidered panel with double dorje and Tibetan script. Prov: Bill Liske; 7" x 7" (18cm x 18cm); **\$600-900**

47. Early Silk Gauze with Zoomorphic Shapes; China/Tibet, probably Yuan d, mirrored zoomorphic shapes in pearl roundels. Prov: Bill Liske; 2'3" x 2'2" (69cm x 66cm); **\$600-800**

48. Ming Gold Silk Imperial Dragon Fragment; China/Tibet, Ming d, gold silk imperial dragon fragment. Prov: Bill Liske; 9" x 12" (23cm x 30cm); **\$400-600**

49. Yuan or Early Ming Silk Dragon Roundel; China, Yuan or early Ming, silk roundel dragon fragment. Prov: Bill Liske; 5" x 6" (13cm x 15cm); **\$600-800**

50. Early Ming Silk Brocade Fragment; China, Ming d, silk, complex lattice design pattern. Prov: Bill Liske; 6" x 9" (15cm x 23cm); **\$400-600**

51. Assamese Silk Textile; 16/17th Century, silk, depicting elephants and dragons. Prov: Bill Liske; 4'2" x 1'1" (127cm x 33cm); **\$600-800**

52. Ming Embroidered Dragon Square; China, Ming d, silk, light blue embroidered dragon square with pieced brocade border. Prov: Bill Liske; 2'4" x 2'3" (71cm x 69cm); **\$900-1,200**

53. Silk Calligraphic Textile; China, possibly Ming d, dark blue silk with 3 gold Shou calligraphic panels. Prov: Bill Liske; **\$1,000-1,500**

54. Ming Silk Velvet Dragon Textile; China/Tibet, Ming d, double sided gold silk velvet pouch with dragon head and lotus, folded in half. Prov: Bill Liske; open: 10"x22"; **\$800-1,200**

55. Ming Silk Velvet Textile; China/Tibet, Ming d, double sided gold and purple silk velvet pouch with floral design, folded in half. Prov: Bill Liske; open: 10"x22"; **\$400-600**

56. Ming Silk Velvet Textile; China/Tibet, Ming d, double sided russet silk velvet pouch with gold floral design, folded in half. Prov: Bill Liske; Open: 10"x22"; **\$600-800**



56

57. Ming Silk Velvet Textile; China/Tibet, Ming d, double sided russet silk pouch with dragon motif, folded in half. Prov: Bill Liske; open: 10"x22"; **\$600-800**



57

58. Ming Silk Velvet Textile; China/Tibet, Ming d, double sided brown silk velvet pouch with orange and red floral pattern, folded in half. Prov: Bill Liske; Open: 10"x20"; **\$400-600**



58

59. Ming Silk Textile; China/Tibet, Ming d, double sided gold floral brocade pouch, folded in half. Prov: Bill Liske; Open: 10"x20"; **\$400-600**



59

60. Tibetan Silk Collar; Tibet, silk, composed of Ming textiles. Prov: Bill Liske; 3'4"x3'4" (94 cm x 94 cm); **\$600-900**



60

61. Pair of Tibetan Boots; Tibet, 19th-early 20th c, wool, leather. Prov: Bill Liske; 1'1" wide x 1'7" tall (33 cm x 48 cm); **\$300-400**



61

62. Tibetan Dance Costume; Tibet, 19th c or earlier, silk. Prov: Bill Liske; 4'4" wide x 5'6" tall (132 cm x 167 cm); **\$3,000-4,000**



62

63. Nomad Woman's Dress; Tibet/Ladakh, 19th c, Chang Tang Plateau, nomad woman's dress with multi-colored tie-dye tigma crosses. Literature: HALI magazine, issue 169, Tom Cole, "Tale From the Hills". Prov: Bill Liske; 4'7" wide x 3' 10" tall (140 cm x 117 cm); **\$2,000-3,000**



63

64. Tibetan Tiger Rug; Tibet, 19th c or earlier, tiger khaden rug. Prov: Bill Liske; 2'3" x 4'1" (69cm x 124cm); **\$4,000-5,000**



64

65. Tibetan Tiger Rug; Tibet, 19th c or earlier, tiger saddle rug. Prov: Bill Liske; 2' x 3'10" (61cm x 117cm); **\$1,500-2,000**



65



66



67



68



69



70



71



72



73

66. Rare Cut Loop Tibetan Saddle Rug; Tibet, 19th c, extremely rare cut-loop embroidered makden saddle bottom with "frog foot" motif. Literature: HALI magazine, issue 169, Tom Cole, "Tale From the Hills" Prov: Bill Liske; 4'2" x 2'0" (127cm x 61cm); **\$4,000-5,000**

67. Archaic "Frog Foot" Tibetan Rug; Tibet, 19th c, warp face back khaden. Prov: Bill Liske; 2'8" x 5'8" (81cm x 173cm); **\$3,000-4,000**

68. Archaic "Frog Foot" Tibetan Rug; Tibet, 19th c, 3 medallion khaden with wide flatweave border. Literature: HALI magazine, issue 169, Tom Cole, "Tale From the Hills" Prov: Bill Liske; 2'10" x 5'2" (86cm x 157cm); **\$2,500-3,500**

69. Tibetan Meditation Rug; Tibet, 19th c, warp face back khagangma lama's meditation rug. Prov: Bill Liske; 2'5" x 2'9" (74cm x 84cm); **\$3,000-3,500**

70. Tibetan Meditation Rug; Tibet, 19th c, red field with gold crossed dorje, warp face back khagangma lama's meditation rug. Literature: HALI magazine, issue 169, Tom Cole, "Tale From the Hills"; 2'8" x 2'8" (81cm x 81cm); **\$3,000-3,500**

71. Tibetan Meditation Rug; Tibet, 19th c, extremely large knot "frog foot" khagangma meditation rug. Literature: HALI magazine, issue 169, Tom Cole, "Tale From the Hills" Prov: Bill Liske; 2'3" x 2'5" (69cm x 74cm); **\$2,000-2,500**

72. Tibetan Meditation Rug; Tibet, 19th c, four-square warp face back khagangma lama's meditation rug. Prov: Bill Liske; 2'9" x 2'10" (84cm x 86cm); **\$2,000-2,500**

73. Tibetan Meditation Rug; Tibet, 19th c, archaic wine red field with swastika center. Prov: Bill Liske; 2'5" x 2'7" (74cm x 79cm); **\$1,000-1,500**

74. Tibetan Meditation Rug; Tibet, 19th c, archaic green field with endless knot motif. Prov: Bill Liske; 2'1" x 2'4" (64cm x 71cm); **\$600-800**



74

75. Pair Tibetan Meditation Rugs; Tibet, 19th c, pair of red field single medallion khagangma meditation squares Prov: Bill Liske; 2'8" x 2'10" (81cm x 86cm); **\$1,500-2,000**



75

76. Pair Tibetan Meditation Rugs; Tibet, 19th c, pair of green field latticed khagangma meditation squares. Prov: Bill Liske; 2'6" x 2'5" (76cm x 74cm); **\$1,500-2,000**



76

77. Tibetan Long Kyongden Rug; Tibet, 19th c, blue/gold warp face back kyongden rug. Prov: Bill Liske; 2'3" x 7'4" (69cm x 224cm); **\$3,000-3,500**



77

78. Tibetan Long Kyongden Temple Rug; Tibet, 19th c, soft red field with floral medallion. Prov: Bill Liske; 2'7" x 12'9" (79cm x 389cm); **\$4,000-5,000**



78

79. Tibetan Long Kyongden Temple Rug; Tibet, 19th c, gold/red kyongden temple rug. Prov: Bill Liske; 2'4" x 9'6" (71cm x 290cm); **\$3,000-3,500**



79

80. Tibetan Long Kyongden Temple Rug; Tibet, 19th c, blue/brown kyongden temple rug. Prov: Bill Liske; 2'0" x 10'2" (61cm x 310cm); **\$3,000-3,500**



80

81. Tibetan Three Medallion Khaden Rug; Tibet, 19th c, soft red field with cloud motif and wool fringe. Prov: Bill Liske; 1'10" x 4'0" (56cm x 122cm); **\$2,200-2,600**



81

82. Tibetan Tiger Meander Rug; Tibet, 19th c, red/gold stylized tiger meander warp face back khaden. Prov: Bill Liske; 2'8" x 5'9" (81cm x 175cm); **\$3,200-3,600**



82



83



84



85



86



87



88



89



90



91

83. Tibetan 3 panel Tsuktruk Rug; Tibet, 19th c, red bordered 3-panel. Prov: Bill Liske; 2'8" x 5'3" (81cm x 160cm); **\$2,000-2,500**

84. Tibetan Red/Gold Khaden Rug; Tibet, 19th/ early 20th c, red/gold check khaden. Prov: Bill Liske; 2'11" x 5'2" (89cm x 157cm); **\$2,000-2,500**

85. Tibetan Indigo Tsuktruk Rug; Tibet, 19th/ early 20th c, indigo blue 4-panel tsuktruk. Prov: Bill Liske; 2'8" x 5'9" (81cm x 175cm); **\$1,500-2,000**

86. Tibetan Khagangma Meditation Rug; Tibet, 19th c, red field double shou medallion. Prov: Bill Liske; 2'0" x 2'2" (61cm x 66cm); **\$1,000-1,500**

87. Tibetan Khagangma Meditation Rug; Tibet, 19th c, blue field with medallion and "frog foot" motif. Prov: Bill Liske; 2'5" x 2'8" (74cm x 81cm); **\$1,000-1,500**

88. Tibetan Khagangma Meditation Rug; Tibet, 19th c, walnut field with red crossed dorges. Prov: Bill Liske; 2'6" x 2'4" (76cm x 71cm); **\$1,000-1,500**

89. Tibetan Khagangma Meditation Rug; Tibet, 19th c, beige field with green brocade medallion. Prov: Bill Liske; 2'9" x 2'5" (84cm x 74cm); **\$600-800**

90. Tibetan Two Piece Saddle Rug; Tibet, 19th c, notched rectangle 2-piece makden saddle bottom with floral medallion and "frog foot" motif. Prov: Bill Liske; 4'1" x 2'3" (124cm x 69cm); **\$1,500-2,000**

91. Tibetan Two Piece Saddle Rug; Tibet, mid 19th c, archaic blue field notched rectangle masha/makden saddle top and bottom with "frog foot" and "Rock hill" Prov: Bill Liske; 3'9" x 1'11" (114cm x 58cm); **\$1,200-1,500**

92. Tibetan "Frog Foot" Saddle Rug; Tibet, 19th c, archaic "frog foot" makden saddle bottom. Prov: Bill Liske; 4'1" x 2'0" (124cm x 61cm); **\$1,500-2,000**



92

93. Tibetan Two Piece Saddle Rug; Tibet, 19th c, notched rectangle 2-piece makden/masho saddle top and bottom set. Prov: Bill Liske; 2'2" x 3'2" (66cm x 97cm); **\$1,600-2,000**



93

94. Tibetan Saddle Rug; Tibet, 19th c, blue field archaic medallion makden saddle bottom. Literature: HALI magazine, issue 169, Tom Cole, "Tale From the Hills". Prov: Bill Liske; 4'6" x 1'2" (137cm x 36cm); **\$2,500-3,000**



94

95. Tibetan Saddle Rug; Tibet, mid 19th c, archaic one-piece oval makden with shou and lac pearl border Prov: Bill Liske; 4'1" x 1'10" (124cm x 56cm); **\$1,500-2,000**



95

96. Tibetan Saddle Rug; Tibet, 19th c, red/gold one-piece oval makden saddle bottom with "frog foot motif and linked swastikas, stirrup wear. Prov: Bill Liske; 4'6" x 2'1" (137cm x 64cm); **\$1,400-1,800**



96

97. Tibetan Saddle Rug; Tibet, 19th c, red field oval makden saddle bottom. Prov: Bill Liske; 4'6" x 2'1" (137cm x 64cm); **\$1,600-2,000**



97

98. Tibetan Three Medallion Khaden Rug; Tibet, 19th c, archaic red field "frog foot" 3 medallion khaden with endless knot. Prov: Bill Liske; 2'7" x 4'8" (79cm x 142cm); **\$2,000-2,500**



98

99. Tibetan Three Medallion Khaden Rug; Tibet, 19th c, red field 3 medallion khaden with swastikas. Prov: Bill Liske; 4'6" x 2'1" (137cm x 64cm); **\$1,200-1,600**



099

100. Tibetan Lattice Design Khaden Rug; Tibet, late 19th-early 20th c, red field lattice design khaden. Prov: Bill Liske; 2'4" x 4'6" (71cm x 137cm); **\$2,000-2,500**



100



101



102



103



104



105



106



107



108



109

101. Tibetan Single Medallion Khaden Rug; Tibet, 19th c, brown field single medallion khaden with cloud motif. Prov: Bill Liske; 2'7" x 4'8" (79cm x 142cm); **\$2,000-2,500**

102. Tibetan Saddle Rug; Tibet, 19th c, blue field masho saddle top with "frog foot" and butterfly/bat motif. Literature: HALI magazine, issue 169, Tom Cole, "Tale From the Hills" Prov: Bill Liske; 2'2" x 3'8" (66cm x 112cm); **\$1,500-2,000**

103. Tibetan Three Medallion Khaden Rug; Tibet, 19th c, blue field three medallion with cloud motif. Prov: Bill Liske; 2'7" x 4'8" (79cm x 142cm); **\$2,000-2,500**

104. Tibetan Saddle Rug; Tibet, 19th c, blue single medallion masho top saddle rug with red and gold "frog foot" motif. Prov: Bill Liske; 1'9" x 2'2" (53cm x 66cm); **\$600-900**

105. Tibetan Three Medallion Khaden Rug; Tibet, 19th c, blue field khaden with cloud motif. Prov: Bill Liske; 2'4" x 4'6" (71cm x 137cm); **\$1,500-2,000**

106. Tibetan Three Medallion Khaden Rug; Tibet, 19th c, blue field 3 rectangular medallion khaden with green floral vine border. Prov: Bill Liske; 2'5" x 5'1" (74cm x 155cm); **\$1,400-1,800**

107. Tibetan Saddle Rug; Tibet, 19th c, red field floral masho top saddle rug with cloud motif. Prov: Bill Liske; 2'2" x 2'10" (66cm x 86cm); **\$600-800**

108. Tibetan Single Medallion Small Rug; Tibet, 19th c, blue field single medallion rug with "frog foot" motif. Prov: Bill Liske; 1'7" x 3'1" (48cm x 94cm); **\$800-1,200**

109. Tibetan Three Medallion Khaden Rug; Tibet, 19th c, red field three medallion khaden with "frog foot" motif; 2'4" x 4'1" (71cm x 124cm); **\$1,600-2,000**

110. Tibetan Three Medallion Khaden Rug; Tibet, 19th c, blue field 3 medallion rug with Escher-like linked swastika border. Prov: Bill Liske; 2'7" x 4'2" (79cm x 127cm); **\$1,600-2,200**



110



111

111. Tibetan Three Medallion Khaden Rug; Tibet, 19th c, blue field 3 round medallion khaden with green floral design border. Prov: Bill Liske; 2'3" x 4'6" (69cm x 137cm); **\$1,200-1,600**



112



113

112. Tibetan Khaden Rug; Tibet, 19th c, red/blue plied field floral pattern. Prov: Bill Liske; 2'4" x 4'9" (71cm x 145cm); **\$1,800-2,200**

113. Tibetan Two Medallion Khaden Rug; Tibet, 19th c, blue 2 medallion khaden with 2 shou. Prov: Bill Liske; 2'4" x 4'5" (71cm x 135cm); **\$2,400-2,800**

114. Tibetan Three Medallion Khaden Rug; Tibet, 19th c, blue "frog foot" 3 medallion khaden. Prov: Bill Liske; 2'7" x 4'8" (79cm x 142cm); **\$2,200-2,600**



114



115

115. Tibetan Khaden Rug; Tibet, 19th c, blue brocade design with shou and endless knot. Prov: Bill Liske; 2'10" x 5'6" (86cm x 168cm); **\$1,800-2,400**

116. Yarkand General Ma Rug; China, ca 1930. Prov: Bill Liske; 2'1" x 4'2" (64cm x 127cm); **\$2,000-2,400**



116



117

117. Tibetan Four Medallion Khaden; Tibet, 19th c, blue field with shou design. Prov: Bill Liske; 3'6" x 5'7" (107cm x 170cm); **\$1,400-1,800**

118. Tibetan Eight Accomplishments Khaden Rug; Tibet, late 19th/early 20th c, beige field with 8 accomplishments. Prov: Bill Liske; 2'10" x 5'2" (86cm x 157cm); **\$1,000-1,500**



118



119

119. Tibetan Dragon Rug; Tibet, late 19th/early 20th c, blue field double dragon design with cloud/water border. Prov: Bill Liske; 3'0" x 5'7" (91cm x 170cm); **\$1,600-2,000**



120



121



122



123



124



125



126



127



128



129



120. Tibetan Lama's Khaden Rug; Tibet, late 19th/early 20th c, orange field with dragon/phoenix design. Prov: Bill Liske; 2'8" x 5'1" (81cm x 155cm); **\$1,000-1,400**

121. Three Greek Island Embroidery Fragments; 17th-18th c, silk on linen; **\$400-600**

122. Two Greek Island Embroidered Panels; 18th c, silk floss on linen; **\$300-500**

123. Greek Island Embroidered Curtain Panel; 18th c, silk on linen; 1'4" x 7'7" (41cm x 231cm); **\$1,000-1,500**

124. Greek Island Curtain Panel; 19th c, silk floss on handspun cotton ground, excellent condition; 2'6" x 9'9" (76cm x 297cm); **\$800-1,200**

125. Pair of Silk Moghul Sleeves; India, 18th c, silk floss on cotton, excellent condition; 1'10" x 0'10" (56cm x 25cm); **\$600-900**

126. Pair of Silk Moghul Sleeves; India, 18th c, silk floss on cotton, excellent condition; 1'9" x 0'9" (53cm x 23cm); **\$600-900**

127. Pair of Silk Moghul Sleeves; India, 18th c, silk floss on cotton, excellent condition; 1'9" x 0'10" (53cm x 25cm); **\$600-900**

128. Persian Embroidered Trouser; 18th c, oxidized browns; 1'9" x 1'11" (53cm x 58cm); **\$800-1,200**

129. Pre Columbian Textile Panel; Peru, 9th-11th c, sewn to a cloth and mounted on a stretcher; 2'2"x1'7"; **\$800-1,200**

130. Pre Columbian Band; ; 8" x 72" (20cm x 182 cm), mounted; **\$3,000-4,000**

131. Pair of Chechaoen Silk Embroideries; Morocco, 18th c, silk on linen, including a geometric patterned star and a six-sided rectangular panel. For similar examples: Christies London lot 141, April 18, 2007; Christies London lot 196, October 13, 2006; 2'0" wide x 2'2" tall (61 cm x 66 cm); **\$2,000-3,000**



131



132

132. Ottoman Silk Embroidery; Turkey, 17-18th c, silk on cotton, sewn on a ground cloth and stretcher; 1'10" wide x 1'10" tall (56 cm x 56 cm); **\$1,000-1,500**

133. Ottoman Silk Embroidery; 18th c, silk floss on cotton, three panels sewn together, excellent condition, minor stains. Sewn on the back is a blue cloth label: "First Prize 1935 Powel House Exhibition of Needlework, Philadelphia" Additionally, there is a paper exhibitor label: "Rhodes Tapestry, 18th century or earlier. Exhibitor: Mrs Richard Waln Meirs" On the reverse is written the note: "For Mrs John C Martin, Chairman, Powel House Exhibit, John Wanamaker Store"; 3'9" x 6'11" (114cm x 211cm); **\$12,000-18,000**



133



134

134. Ottoman Epirus Silk Embroidery; Turkey, 17th c, silk on cotton, sewn onto ground cloth and stretcher; 1'5" wide x 2'11" tall (43 cm x 89 cm); **\$1,500-2,000**



135



136

135. Ottoman Epirus Silk Embroidery; Turkey, 17th c, silk on cotton, sewn onto ground cloth and stretcher; 1'5" wide x 3'1" tall (43 cm x 94 cm); **\$1,500-2,000**

136. Ottoman Greek Island Embroidery; Turkey, 18/19th c, silk on cotton; 3'4" wide x 1'10" tall (102 cm x 56 cm); **\$800-1,200**

137. Ottoman Greek Island Embroidery; Turkey, 18/19th c, silk on cotton; 3'2" wide x 3'1" tall (97 cm x 94 cm); **\$800-1,200**

138. Ottoman Greek Island Embroidery; Turkey, 18/19th c, silk on cotton; 3'0" wide x 4'7" tall (91 cm x 140 cm); **\$2,500-3,000**



137



138



139



140



141



142



143



144



145



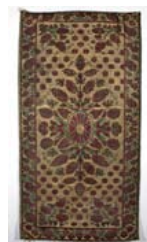
146



147



148



149



150

139. Fine Rescht Embroidery; Persia, late 19th c. Signed: "The work of master craftman Ismael Kaldooz Bash Rashti 1292" (circa 1876) French label; 5'6" x 5'5" (168cm x 165cm); **\$4,000-6,000**

140. Fine Rescht Embroidery; Persia, 18th c, silk, linen, wool; (137cm x 229cm); **\$4,000-6,000**

141. Early Bargello Textile; 16/18th c, silk on burlap ground; 3'3"x5'11"; **\$800-1,200**

142. Three Early Christian Textiles; 16th c or earlier? Silk floss on cotton ground, oxidized metal thread; 11" wide x 1'4" tall (28 cm x 41 cm); **\$2,000-3,000**

143. Early Hispano Moorish (?) Textile; Possibly 16th c, silk, mounted; 1'4" wide x 2'3" tall (41 cm x 69 cm); **\$3,000-5,000**

144. Early Continental Brocade; 18th or earlier; 1'7" x 3'3" (48cm x 99cm); **\$1,000-1,500**

145. Persian Silk Velvet; 19th c or earlier, Safavid style silk velvet; 1'8" x 2'6" (51cm x 76cm); **\$2,000-3,000**

146. Indonesian Silk and Gold Thread Panel; Indonesia, 19th c, red silk, gold thread, excellent condition; 3'x7'3"; **\$1,000-1,500**

147. Continental Silk Brocade Panel; 18th c, silk, woven metal thread selvages; 1'5"x7'7"; **\$400-800**

148. Ottoman Silk Yastik; Turkey, 18/19th c, silk and metal thread, sutures; 1'8" x 2'11" (51cm x 89cm); **\$600-900**

149. Bursa Silk Yastik; 18th c, multiple splits and tears; 2'x3'10"; **\$100-200**

150. Continental Silk Brocade; 18th c, excellent condition; 4'5" x 4'2" (135cm x 127cm); **\$400-600**

151. Continental Silk and Leather Embossed Coat of Arms; Possibly Florentine, 18/19th c or earlier, silk Chinese ground cloth, raised leather embossed areas, metal thread, European coat of arms with three crescent moons; 3'11"x5'6"; **\$2,000-4,000**



151

152. Continental Green Silk Chausible; 18th c, silk and metal thread brocade; 2'10"x4'4"; **\$400-600**



152

153. Ottoman Silk Velvet and Silver Embroidered Cape; Turkey, 19th c or earlier, green velvet ground, metal thread; 9'8" x 5'7" (295cm x 170cm); **\$800-1,200**



153



154

154. Continental Square Cloth; 19th c or earlier, cotton embroidery, madder and indigo dyes, excellent condition, minor soiling; 3'7" x 3'6" (109cm x 107cm); **\$400-600**

155. Whimsical 19th Century American Needlepoint Sampler; 19th c, silk on linen; 1'10" x 1'9". (56cm x 53cm); **\$1,000-1,500**



155

156. Turkish Marash Embroidery; Eastern Turkey, 19th c, fine cotton embroidery, natural dyes, holes, sewn to a ground cloth and mounted on a stretcher; 5'4" x 5'4". (163cm x 163cm); **\$1,000-1,500**



156

157. Qing Dynasty Li Dragon Blanket; China, 18/19th c, silk on cotton, three panels; 3'11"x6'11"; **\$4,000-5,000**



157

158. Yuan Silk Rank Badge; Possibly 12th c, silk, fragile condition; 1'0" x 1'0" (30cm x 30cm); **\$1,500-2,500**



158

159. Persian Silk and Metal Thread Brocade; 18th c or earlier, pieced gold ground textile with silk and metal thread brocade, sewn labels MFA Boston/Elizabeth McCormick; 3'4"x3'10"; **\$1,000-3,000**



159

160. Three Japanese Gold Silk Brocade Panels; Japan, 18th c, gold silk brocade; 1'3"x2'2", 1'1"x3'5", 2'2"x2'1"; **\$400-600**



160



161



162



163



164



165



166



167



168



169



170



171



172



173

161. Japanese Gold Silk Brocade Panel; Japan, 19th c or earlier, silk; 1'3" x 5'3" (38cm x 160cm); **\$400-600**

162. Japanese Silk Panel; Japan, 18th c, silk, hemp; 1'11" x 6'3" (58cm x 191cm); **\$400-600**

163. Marash Embroidery; Turkey, 19th c, natural dye cotton embroidery; 4'6" x 7'4" (137cm x 224cm); **\$1,200-1,800**

164. Japanese Indigo Cloth; 19/early 20th c, cotton; 5'3" x 5'8" (160cm x 173cm); **\$200-300**

165. Kashmir Shawl; Persia, 19th c, black center, holes, inscription; 6'0" x 6'5" (183cm x 196cm); **\$800-1,200**

166. Kashmir Shawl; Persia, 19th c, black center, inscription; 6'6" x 6'6" (198cm x 198cm); **\$800-1,200**

167. Kashmir Shawl; Persia, 19th c, black center, inscription; 5'11" x 5'10" (180cm x 178cm); **\$800-1,200**

168. Swedish Reverse Weave Flatweave; Signed and dated: "O J 1900"; 4'0" x 4'4" (122cm x 132cm); **\$400-600**

169. Continental Wool Needlepoint; 18th c, holes; 4'11" x 8'8" (150cm x 264cm); **\$200-300**

170. Silk on Silk Floral Embroidery; China, 19th c; 4'10" x 10'2" (147cm x 310cm); **\$400-600**

171. European Silk and Metal Thread Panel; 19th c, silk, metal thread; 4' x 6' (122cm x 183cm); **\$200-300**

172. Six Chinese Rondels; China, 19th c, velvet, brocade, embroidery, 3 pair; 12" (30cm); **\$200-300**

173. Japanese Silk and Metal Thread Panel; Japan, 19th c, silk and metal thread; 1'6" x 5' (46cm x 152cm); **\$400-600**

174. Three Gujurati Metal Thread Brocades; India, 19th, silk, metal thread. Prov: McCormick Collection; 3'7"x3'7", 15'2"x10"; **\$500-700**



174



175

175. Two Chinese Textiles; China, 19th c or earlier, voided velvet panel, kesi panel with insects; 1'11"x2'5", 1'4"x1'9"; **\$600-900**

176. Chinese Green Silk Scarf; China, 19th c, silk embroidered with auspicious symbols; 1'6" x 3'4" 46cm x 102cm).; **\$400-600**



176



177

177. Syrian Silk Tapestry Woven Bag; Syria, 19th c, silk tapestry weave; 5" x 6" (13cm x 15cm); **\$400-600**

178. Four Chinese Textiles; China, 3 rank badges, 1 paper mounted embroidery; 1'6"x 4'1", 2'1"x 1'11" (46 cm x 125 cm , 64 cm x 58 cm); **\$200-300**



178



179

179. Pair of Asian Textiles; Early 20th c, calligraphed silk umbrella, satin stitched silk banner. (Includes letter explaining umbrella); 5'2" x 4'2" (157cm x 127cm); **\$500-700**

180. Three Turkmen Robes; Early-mid 20th c, embroidered silk and cotton, excellent condition; **\$500-700**



180



181

181. Two Persian Textiles; 19th c, silk, Qajar brocade and Persian embroidery; **\$300-400**

182. Five 18th c European Textiles; 18th c, damage, stains, losses, darning and cobbling; **\$200-300**



182



183

183. Three Middle Eastern Cloaks; 19th and early 20th c, 3 cloaks, camel hair with gold thread, black silk with silver thread, purple silk with gold thread; **\$800-1,200**

184. Kashmir Shawl; Persia, c 1860, black center; 5'8" x 5'8" (173cm x 173cm); **\$800-1,200**



184



185



186



187



188



189



190



191



192



193



194



195

185. Tashkent Suzani; Uzbekistan, 19th c, silk, cotton; 3'4" x 6'10" (102cm x 208cm); **\$1,000-2,000**

186. Safavid/Qajar Silk Textile; Persia, textile pastiche of Safavid and Qajar silk; 2'11" x 2'2" (89cm x 66cm); **\$800-1,200**

187. Persian Silk Textile; Persia, 18th c? pieced together with MFA Boston/McCormick labels; 2'4" (71cm); **\$300-400**

188. Two Southeast Asian Textiles; 19th c, Indian Kalamkari and printed textile; 3'3" x 9'10" (99cm x 300cm); **\$800-1,200**

189. Modernist Cubist Tapestry; Early to mid 20th c, woven of wool roving; 5'2" x 5'9" (157cm x 175cm); **\$200-400**

190. Hausa Robe and Pants; Nigeria, early/mid 20th c, handspun cotton; 5'8" x 3'9" (173cm x 114cm); **\$500-700**

191. Hausa Robe; Nigeria, early to mid 20th c, patches, indigo dye transfer on handspun cotton; 7'11" x 6'8" (241cm x 203cm) (open); **\$300-500**

192. West African Wrap; Mali-Senegal, early 20th c, narrow strips, sewn, handspun cotton and indigo dye, several patches; 3'10" x 5'4" (117cm x 163cm); **\$200-300**

193. West African Wrap; Senegal, early 20th c, narrow strips, ikat pattern, handspun cotton and indigo dye; 3'5" x 5'4" (104cm x 163cm); **\$200-300**

194. West African Wrap; Mali-Senegal, early 20th c, narrow strips, sewn, handspun cotton and indigo dye; 4'2" x 7'4"; **\$800-1,200**

195. North African Kilim; Circa 1900, sewn in five panels, combination naturally dyed wool and handspun cotton, stains; 3'1" x 7'8" (94cm x 234cm); **\$400-600**

196. West African Wrap; Mali-Senegal, ten narrow strips, sewn, handspun cotton and indigo dye, stains; 3'7" x 6'0" (109cm x 183cm); **\$400-600**



196



197

197. North African Kilim; Circa 1900, sewn in five panels, combination naturally dyed wool and handspun cotton, areas of oxidized brown; 4'3" x 8'0" (130cm x 244cm); **\$400-600**



198

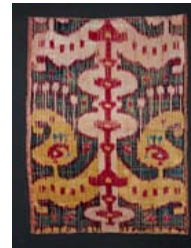


199

198. Two West African Mud Cloths; Mali, early 20th c, areas of wear; 4'0" x 5'9" (122cm x 175cm); **\$200-300**

199. Greek/Macedonian Cloak; Greece/Macedonia, 19th/early 20th c, wool and cotton decorated cloak, excellent condition.; **\$400-600**

200. Uzbek Silk Velvet Panel; Uzbekistan, 19th c, silk velvet, sewn to a ground cloth and nicely mounted; 1'7"x1'11"; **\$300-400**



200



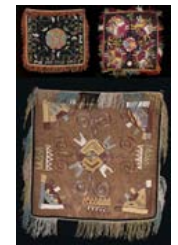
201

201. Uzbek Embroidery; Uzbekistan, circa 1900, silk, cotton, sewn to a ground cloth and nicely mounted; **\$600-800**

202. Pair of Uzbek Embroideries; Uzbekistan, early 20th c, silk, cotton; 1'10"x2'3", 2'1"x2'1"; **\$200-300**



202



203

203. Three Lakai Embroideries; Uzbekistan, early 20th c, silk, cotton; 1'6"x1'7", 1'7"x1'7", 1'10"x1'9"; **\$400-600**

204. Three Lakai Embroideries; Uzbekistan, early 20th c, silk, cotton; 1'2"x1'4", 1'1"x1'10", 2'3"x2'4"; **\$300-500**



204



205

205. Silk Uzbek Petit Point; Uzbekistan, early 20th c, silk, cotton; 1'2"x1'5"; **\$200-300**

206. Three Uzbek Embroideries; Uzbekistan, early 20th c, silk, cotton; 2'2"x2'4", 2'5"x2'3", 2'3"x2'3"; **\$600-800**



206



207

207. Central Asian Boots and Belt; 19th c, silk velvet and metal thread; 4"x20", 10"x18"; **\$300-500**



208



209



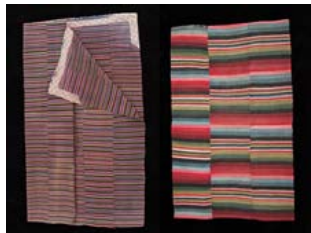
210



211



212



213



214



215



216



217



218

208. Two Suzanis and a Bokche; Uzbekistan, 19th-early 20th c, silk, cotton, including a fine 19th c suzani, a 19th c bokche, and an early 20th c suzani; 6'6"x7'2", 4'7"x6'11", 9'2"x9'9"; **\$1,000-1,500**

209. Two Silk Ikat Kaftans; Uzbekistan, circa 1900, silk with cotton lining; **\$400-600**

210. Four Middle Eastern/Asian Cloaks and Vests; 19th/early 20th c, wool, silk, cotton; **\$600-800**

211. Six Silk Lakai Embroidered Panels; Uzbekistan, circa 1900, silk, cotton; Longest: 46"; **\$400-600**

212. Five Silk Lakai Embroidered Panels; Uzbekistan, circa 1900, silk, cotton, silver; Longest: 42" (120cm); **\$400-600**

213. Two Tibetan/Nepali Blankets; Tibet/Nepal, early 20th c, wool, cotton; 4'x7', 2'1"x2'9"; **\$200-300**

214. Five Turkmen Child's Tunics; Turkmenistan, early to mid 20th c, silk, cotton, wool, amulets; Tallest: 20" (50cm); **\$1,000-1,500**

215. Five Tekke Turkmen Textiles; Turkmenistan, early to mid 20th c, silk, cotton, wool, including: one child's tunic, 2 child's collars, 1 silk shawl, 1 silk embroidered band; **\$600-900**

216. Collection of Nine Vintage Santal Scrolls; India, 19th to mid 20th c, ink, handmade paper; varying lengths up to 15 feet (450cm); **\$600-800**

217. Two Pre Columbian Textiles; Peru, including a pre Columbian mounted fragment and cocoa bag; 11"x19", 9"x9"; **\$400-600**

218. Yanktonai (Sioux) Beaded Leather Dress; United States, early 20th c, beaded leather dress, sinew sewn. Made by "Mrs Hairy Chin" ex Susan Power collection; Ht: 3'7" (109cm); **\$1,000-2,000**

219. Nez Perce Corn Husk Bag; United States, early to mid 20th c, decorated on both sides, purchased near Clear Water Ridge, Idaho (original tag); 8" x 10" (20cm x 25cm); **\$300-400**



219



220

220. Plains Indians Beaded Straps; United States, early to mid 20th c, decorated with buffalo, thunderbirds and geometric designs; 2" x 27" (5cm x 69cm); **\$200-300**



221



222

221. Navajo Dayughi Blanket; Ca 1890, Navajo Dayughi blanket, small stains, minor reweaves; 4'2" x 6'4" (127cm x 193cm); **\$1,200-1,800**

222. Navajo Crystal Rug; Ca 1910, small stains; 3' x 4'10" (91cm x 147cm).; **\$800-1,200**



222B



223

222B. Eastern Reservation Navajo Rug, circa 1910. Dimensions: 6'5" x 3'9"; **\$1,000-2,000**

223. Navajo Chinle Rug; Ca 1940, revival blanket; 4'2"x6'10"; **\$600-800**

224. Plains Pipebag; 1880's, leather and glass beads (blue*), dry, losses to fringe, length; 7"x2'7"; **\$2,000-3,000**



224



225

225. Plains Pipebag; 1910's, leather, quills, glass beads (white), losses to quill work; 7"x2'6"; **\$400-600**

226. Pair Apache Ladies Moccasins; 19th c, leather and glass beads, open seams, bead loss; 11"x8"; **\$600-900**



226



227

227. Pair Beaded Iroquois Picture Frames; Ca 1900, glass beads; 7"x1'1"; **\$300-400**

228. Iroquois Frame and Boot Whimsy; Ca 1900, glass beads, frame; 8"x12, boot: 7" tall.; **\$200-400**



228



229

229. Five Plains Beaded Items; 19th/20th c, beaded gauntlets, beaded umbilical fetish, 3 loom beaded fobs; **\$300-500**

230. Navajo Rug; Circa 1900; 4'5" x 6'5" (135cm x 196cm); **\$800-1,200**



230



231



232



233



234



235



236



237



238



239



240



240A



240B



241

231. Huron Bag and Medallion Case; 19th c, Huron bag and medallion case; 6"x7",3"x3"; **\$200-300**

232. Bessarabian Kilim; Romania, circa 1900, wool, excellent condition; 6'0" x 8'10" (183cm x 269cm); **\$2,000-3,000**

233. Bao Tou Carpet; China, 19th c; 2'4" x 4'2" (71cm x 127cm); **\$800-1,200**

234. Senneh Kilim; Persia, late 19th c, small patches, oxidized browns; 4'2" x 5'9" (127cm x 175cm); **\$600-900**

235. Pirot Kilim; Serbia, circa 1900, excellent condition; 7'6" x 9'7" (229cm x 292cm); **\$600-900**

236. Bessarabian Kilim; Romania, circa 1900, excellent condition; 2'6" x 5'8" (76cm x 173cm); **\$600-900**

237. Bessarabian Kilim; Romania, late 19th c, fraying; 5'1" x 9'10" (155cm x 300cm); **\$400-600**

238. Pirot Coat of Arms Kilim; Serbia, circa 1900, excellent condition; 4'10" x 7'0" (147cm x 213cm); **\$400-600**

239. Pirot Prayer Kilim; Serbia, mid 19th c, wear, oxidized browns, sewn and mounted on a stretcher; 3'2" x 5'2" (97cm x 157cm); **\$2,000-3,000**

240. Ushak Carpet Fragment; Turkey, 17th c; 3'4" x 4'5" (102cm x 135cm); **\$1,500-2,000**

240A. 17th Century Ghiordes Prayer Rug; Turkey, 17th c, Ghiordes Prayer rug, with missing elements composed of 18th and 19th c patches, splits, sewing; 3'10" x 4'10"; **\$2,000-3,000**

240B. 17th Century Spanish Alcaraz Carpet; 17th Century Alcaraz Carpet, Spain; 4'3" x 8'2" (130cm x 249cm); **\$14,000-18,000**

241. West Anatolian Village Rug; Turkey, 19th c, old repairs to kilim ends and selvages; 2'8" x 4'0" (81cm x 122cm); **\$2,000-3,000**

242. West Anatolian Village Rug; Turkey, 19th c, original kilim ends, good overall pile; 4'3" x 5'2" (130cm x 157cm); **\$10,000-15,000**



242

243. Konya Yastik; Turkey, 19th c, good overall pile, areas of wear to selvages and kilim ends; 1'10" x 2'10" (56cm x 86cm); **\$1,500-2,500**



243

244. Central Anatolian Yastik; Turkey, 19th c, missing kilim ends, missing selvedge, high pile; 1'9" x 2'4" (53cm x 71cm); **\$1,500-2,500**



244

245. Bergama Village Rug; Turkey, 19th c, high pile, original kilim ends; 5'1" x 6'7" (155cm x 201cm); **\$6,000-8,000**



245

246. West Anatolian Village Rug; Turkey, Yuntdag area, good overall pile, vivid natural dye palette, original kilim ends, minor old repairs; 5'8" x 7'4" (173cm x 224cm); **\$8,000-12,000**



246



247

247. Bergama Rug; Turkey, 19th c, high pile, original kilim ends; 6'9" x 7'4" (206cm x 224cm); **\$8,000-12,000**

248. Mejidieh Milas Rug; Turkey, 19th c, old repairs, oxidized browns; 3'8" x 5'4" (112cm x 163cm); **\$1,000-1,500**



248



249

249. Milas Rug; Turkey, 19th c, old repairs, oxidized browns; 3'6" x 4'11" (107cm x 150cm); **\$2,000-3,000**

250. Konya Prayer Rug; Turkey, late 19th c, old repair and rewoven ends, high pile; 3'8" x 7'2" (112cm x 218cm); **\$1,000-1,500**



250



251

251. East Anatolian Kurdish Long Rug; Turkey, 19th c, wear, missing end, vivid natural dye palette; 3'2" x 11'9" (97cm x 358cm); **\$1,000-1,500**

252. East Anatolian Kurdish Rug; Turkey, 19th c, high pile, several old repairs, area of missing selvedge; 4'3" x 8'0" (130cm x 244cm); **\$1,500-2,000**



252



253



254



255



256



257



258



259



260



260A



261



262



263



264



265

253. Three Small Rugs; 19th-early 20th c: Turkish Kirshehir sampler, NW Persian bagface, Baluchi balisht(complete); 1'6"x2'3", 1'6"x1'6", 1'6"x3'6"; **\$500-700**

254. Tulu Rug; Central Turkey, mid 20th c, full pile; 4'9" x 6'5" (145cm x 196cm); **\$400-600**

255. Tulu Rug; Central Turkey, mid 20th c, full pile; 4'9" x 8'2" (145cm x 249cm); **\$400-600**

256. Tulu Rug; Balkans, late 19th c, madder red field, two panels; 4'9" x 5'11" (145cm x 180cm); **\$400-600**

257. Siirt Kilim; Eastern Turkey, early 20th c; 4'7" x 6'8" (140cm x 203cm); **\$100-200**

258. Tulu Rug; Central Turkey, early 20th c, full pile; 4'7" x 8'1" (140cm x 246cm); **\$400-600**

259. Tulu Rug; Central Turkey, early 20th c, areas of wear; 4'5" x 6'5" (135cm x 196cm); **\$200-300**

260. Tulu Rug; Central Turkey, mid 20th c, full pile; 4'7" x 8'0" (140cm x 244cm); **\$400-600**

260A. Moroccan Long Rug; Moroccan Long Rug. Morocco, early 20th c, saffron field, good overall pile; 4'5" x 10'10"; **\$1,000-1,500**

261. Konya Kilim; Central Turkey, 19th c, oxidized browns, several small holes; 48"x59" (121cmx149cm); **\$2,000-3,000**

262. Central Anatolian Kilim; Turkey, 19th c, two panels, vivid natural dye palette; 5'4" x 11'4"; **\$1,000-1,500**

263. Konya Obruk Kilim; Turkey, late 19th c, stain; 3'9" x 4'8"; **\$400-600**

264. Central Anatolian Kilim; Turkey, late 19th c, vivid natural dye palette; **\$1,000-1,500**

265. Reyhanli Kilim; Turkey, late 19th c, two panels; 5' x 10'6"; **\$1,000-1,500**

266. Afyon Kilim; Turkey, circa 1900, areas of minor wear; 6'6" x 11'; **\$600-900**



266

267. East Anatolian Kurdish Cicim; Turkey, late 19th c, five panels, stains; 6'4" x 11'9" (193cm x 358cm); **\$1,000-1,500**



267

268. Anatolian Cicim; Turkey, circa 1900, minor areas of wear; 3'5" x 3'10"; **\$200-300**



268

269. Karabagh Dragon Carpet Fragment; Caucasus, 17th c, mounted on frame; 1'7" x 2'6" (48cm x 76cm); **\$1,000-1,500**



269

270. Karabagh Memling Gul Kazak Rug; Caucasus, 19th c, good overall pile, original ends; 4'3" x 8'6" (130cm x 259cm); **\$4,000-6,000**



270

271. Kasim Ushag Rug; Caucasus, late 19th c, good overall pile, original ends; 4'8" x 8'0" (142cm x 244cm); **\$4,000-6,000**



271

272. Kuba Long Rug; Caucasus, late 19th c, good overall pile, areas of minor wear; 3'3" x 11'8" (99cm x 356cm); **\$5,000-7,000**



272

273. Shirvan Rug; Caucasus, circa 1900, good overall condition; 4'7" x 6'4" (140cm x 193cm); **\$2,500-3,500**



273

274. Chi Chi Rug; Caucasus, 19th c, repairs, splits, dry areas; 4'0" x 6'0" (122cm x 183cm); **\$1,000-2,000**



274

275. Shirvan Prayer Rug; Caucasus, circa 1900, worn condition; 3'1" x 4'3" (94cm x 130cm); **\$200-300**



275

276. Chi Chi Rug; Caucasus, circa 1900, good overall pile, areas of minor wear; 3'10" x 6'0" (117cm x 183cm); **\$1,000-1,500**



276

277. Kuba Rug; Caucasus, circa 1900, good overall piles, missing ends; 4'0" x 6'0" (122cm x 183cm); **\$800-1,200**



277

278. Bordjalu Kazak Rug; Caucasus, 19th c, areas of wear, tear; 5'4" x 6'3" (163cm x 191cm); **\$1,000-2,000**



278



279



280



281



282



283



284



285



286



287



288



289



290



291

279. Talish Rug; Caucasus, 19th c, extensive old repairs; 3'9" x 9'2" (114cm x 279cm); **\$800-1,200**

280. Kazak Rug; Caucasus, 19th c, crease wear, areas of missing pile; 4'10" x 6'3" (147cm x 191cm); **\$1,000-2,000**

281. Kazak Rug; Caucasus, late 19th c, one crease wear with broken warps, minor wear, original macrame kilim ends; 3'10" x 5'2" (117cm x 157cm); **\$800-1,200**

282. Kazak Rug; Caucasus, 19th c, areas of wear, splits, old repairs; 5'0" x 6'9" (152cm x 206cm); **\$1,000-2,000**

283. Kazak Rug; Caucasus, circa 1900, areas of wear; 5'5" x 7'3" (165cm x 221cm); **\$1,000-1,500**

284. Kazak Rug; Caucasus, circa 1900, areas of wear; 4'9" x 5'4" (145cm x 163cm); **\$600-900**

285. Eagle Kazak Rug; Caucasus, 19th c, old repair; 4'3" x 7'4" (130cm x 224cm); **\$3,000-4,000**

286. Eagle Kazak Rug; Caucasus, 19th c, areas of wear, missing end, old repairs; 4'1" x 9'5" (124cm x 287cm); **\$2,000-3,000**

287. Eagle Kazak Rug; Caucasus, circa 1900, areas of wear, old repair; 3'8" x 6'4"; **\$1,000-2,000**

288. Eagle Kazak Rug; Caucasus, 19th c, areas of wear, oxidized browns, applied fringes; 3'10" x 6'3" (117cm x 191cm); **\$1,000-1,500**

289. Kazak Rug; Caucasus, 19th c, oxidized browns; 3'5" x 5'8"; **\$2,000-3,000**

290. Gendje Kazak Rug; Caucasus, 19th c, crease wears, oxidized browns; 5'4" x 8'4" (163cm x 254cm); **\$2,000-3,000**

291. Gendje Kazak Rug; Caucasus, late 19th c, good overall pile, original ends, creases; 3'11" x 7'1" (119cm x 216cm); **\$1,000-1,500**

292. Shirvan Rug; Caucasus, late 19th c, overall low pile; 3'1" x 5'3" (94cm x 160cm); **\$1,000-1,500**



292



293

293. Kazak Rug; Caucasus, 19th c, areas of wear, damages; 5'5" x 7'6" (165cm x 229cm); **\$1,000-1,500**



294



295

294. Fachralo Kazak Rug; Caucasus, 19th c, worn areas; 4'7" x 8'0" (140cm x 244cm); **\$600-900**

295. Karachop Kazak Rug; Caucasus, 19th c, very worn, missing ends; 6'0" x 7'3" (183cm x 221cm); **\$600-900**

296. Karachop Kazak Rug; Caucasus, 19th c, worn areas; 5'6" x 7'8" (168cm x 234cm); **\$600-900**



296



297

297. Kuba Rug; Caucasus, 19th c, oxidized browns; 3'1" x 5'2" (94cm x 157cm); **\$600-900**

298. Karabagh Kazak Rug; Caucasus, 19th c, heavily oxidized browns; 4'4" x 7'3" (132cm x 221cm); **\$400-600**



298



299

299. Armenian Kazak; Caucasus, late 19th c, worn; 5'3" x 7'6" (160cm x 229cm); **\$600-900**

300. Derbend Pinwheel Rug; Caucasus, 19th c, wear, holes, oxidized browns; 5'4" x 8'4" (163cm x 254cm); **\$400-600**



300



301

301. Kazak Rug; Caucasus, circa 1900, good overall pile; 4'1" x 7'8" (124cm x 234cm); **\$1,000-1,500**

302. Zakatala Long Rug; Caucasus, circa 1900, several old repairs, inscription; 4'0" x 10'10" (122cm x 330cm); **\$600-900**



302



303

303. Kazak Double Niche Prayer Rug; Caucasus, circa 1900, low areas; 4'2" x 6'10" (127cm x 208cm); **\$1,000-1,500**

304. Karabagh Kazak Rug; Caucasus, circa 1900, overall low pile, areas of wear; 4'1" x 6'11" (124cm x 211cm); **\$600-900**



304



305



306



307



308



309



310



311



312



313



314



315



316

305. Kuba Lattice Rug; Caucasus, circa 1900, old repair, good overall pile; 4'11" x 7'2" (150cm x 218cm); **\$800-1,200**

306. Tree Kazak Rug; Caucasus, circa 1900, old repairs, areas of wear; 5'0" x 7'10" (152cm x 239cm); **\$600-900**

307. Kazak Rug; Caucasus, circa 1900, areas of wear, creases, low pile; 4'2" x 6'8" (127cm x 203cm); **\$400-600**

308. Shirvan Band Kilim; Caucasus, 19th c, combination kilim and sumakh weave, small areas of oxidized browns, vivid natural dye palette, including aubergine, shades of apricot; 3'4" x 9'; **\$2,000-3,000**

309. Shah Sevan Horse Cover; Caucasus, circa 1900, kilim and sumakh weave, six panels, original sides and ends, two small patches, excellent condition; 4'10" x 4'3" (147cm x 130cm); **\$2,000-3,000**

310. West Persian Horse Cover; Persia, early 20th c, combination flatweave and pile, excellent condition, tassels; 5'10" x 4'10" (178cm x 147cm); **\$1,000-1,500**

311. Pair of Sumakh Bag Faces; Caucasus, circa 1900; 1'10" x 1'9" (56cm x 53cm); **\$200-300**

312. Four Sumakh Panels; Caucasus, late 19th c.; **\$600-900**

313. Shah Savan Besik; Caucasus, circa 1900; 5'5" x 4'1" (165cm x 124cm); **\$500-1,000**

314. Sumakh Carpet; Caucasus, circa 1900, areas of oxidized browns; 8'0" x 9'1" (244cm x 277cm); **\$1,000-1,500**

315. Sumakh Carpet; Caucasus, 19th c, holes; 5'6" x 9'11" (168cm x 302cm); **\$1,000-1,500**

316. Verneh Carpet; Caucasus, late 19th c, two panels, original tassel ends; 5'5" x 7'2" (165cm x 218cm); **\$1,000-1,500**

317. Verneh Carpet; Caucasus, circa 1900, two panels; 5'4" x 5'8" (163cm x 173cm); **\$1,000-1,500**



317



318

318. Verneh Rug; Caucasus, circa 1900, wool and cotton highlights, oxidized browns; 3'0" x 4'10" (91cm x 147cm); **\$600-900**



319



320

319. Fine West Persian Kilim; Persia, circa 1900, excellent condition, vivid natural dye palette; 4'6" x 9'3"; **\$1,000-1,500**

320. Kurdish Kilim; Syria, circa 1900; 3'9"x7'6"; **\$200-300**

321. Shirvan Kilim; Caucasus, late 19th c; 5'3"x11'7"; **\$1,000-1,500**



321



322

322. Shirvan Kilim; Caucasus, late 19th c; 4'10"x10'2"; **\$1,000-1,500**

323. Kuba Kilim; Caucasus, circa 1900, excellent condition; 5'11"x11'9"; **\$1,000-1,500**



323



324

324. Veramin Kilim; West Persia, circa 1900, excellent condition; 5'2"x9'11"; **\$800-1,200**

325. Shah Sevan Kilim; Caucasus, circa 1900, excellent condition, cotton highlights; 7'2"x10'8"; **\$1,000-1,500**



325



326

326. Shah Sevan Kilim; Caucasus, circa 1900, excellent condition; 5'1"x6'8"; **\$800-1,200**

327. Shah Sevan Kilim; Caucasus, circa 1900, minor color run; 7'x9'3"; **\$600-900**



327



328

328. Kuba Kilim; Caucasus, circa 1900, excellent condition; 5'8"x10'11"; **\$1,000-1,500**

329. Shah Sevan Kilim; Caucasus, circa 1900, excellent condition; 6'9"x10'; **\$800-1,200**



329



330

330. Verneh Rug; Caucasus, circa 1900, excellent condition; 5'11"x7'7"; **\$600-900**

331. Verneh Rug; Caucasus, early 20th c, excellent condition.; 4'6"x7'5"; **\$400-600**



331



332

332. Gashgai Kilim; Persia, circa 1900, cotton highlights; 5'3"x 9'7"; **\$800-1,200**



333



334



335



336



337



338



339



340



341



342



343



344



345



346

333. Verneh Panel; Caucasus, circa 1900; 2'x3'9"; **\$400-600**

334. Caucasian Sumakh Saddlebag; Caucasian Sumakh Saddlebag, Caucasus, early 20th c.; 1'4" x 3'7"; **\$200-300**

335. Turkmen Flatwoven Namazlyk; Turkmenistan, late 19th c.; 2'6" x 1'2"; **\$400-600**

336. Tekke Torba; Turkmenistan, 19th c, several old repairs.; 3'8" x 1'6"; **\$1,000-1,500**

337. Ersari Jollar; Afghanistan, circa 1900, fraying, good pile; 5'4" x 1'9" (163cm x 53cm); **\$1,000-1,500**

338. Tekke Main Carpet; Turkmenistan, circa 1870, small patch, sewn tear, stain; 6'6" x 7'1" (198cm x 216cm); **\$3,000-5,000**

339. Yomud Main Carpet; Turkmenistan, 19th c, areas of extensive wear; 5'4" x 9'10" (163cm x 300cm); **\$1,000-2,000**

340. Tekke Main Carpet; Turkmenistan, late 19th c, high pile, original kilim ends, several small old repairs; 6'6" x 9'10" (198cm x 300cm); **\$6,000-8,000**

341. Belouch Rug; Afghanistan, circa 1900, good pile; 3'4" x 5'10"; **\$400-600**

342. Belouch Rug; Afghanistan, circa 1900, good pile, fraying ends; 3'5" x 6'5" (104cm x 196cm); **\$300-400**

343. Ersari Main Carpet; Afghanistan, 19th c, extensive moth damage, tears; 6'9" x 8'2" (206cm x 249cm); **\$400-600**

344. Ersari Chuval; Afghanistan, circa 1900, missing areas, stain; 4'5" x 3'4"; **\$200-300**

345. Ersari Rug; Afghanistan, circa 1900, good pile; 3'3" x 5'11" (99cm x 180cm); **\$600-800**

346. Yomud Torba; Turkmenistan, circa 1900, sumakh weave, good condition; 2'7" x 1'4" (79cm x 41cm); **\$200-300**

347. Pair of Yomud Saddle Bags; Turkmenistan, circa 1900, mixed pile and flatweave, good condition; 1'7" x 3'6" (48cm x 107cm); **\$400-600**



347

348. Gashgai Bag; Persia, late 19th c, original back, sumakh end finish; 2'3" x 1'10" (69cm x 56cm); **\$800-1,200**



348

349. Kurd Jaffe Bagface; Persia, circa 1900, wear; 1'11" x 1'6" (58cm x 46cm); **\$100-200**



349



350

350. Veramin Rug; Persia, circa 1900, good pile; 2'5" x 2'7" (74cm x 79cm); **\$600-900**

351. Gashgai Rug; Persia, circa 1900, good overall condition, high pile; 4'11" x 6'9" (150cm x 206cm); **\$3,000-4,000**



351



352

352. Gashgai Rug; Persia, circa 1900, good overall condition, minor wear; 3'4" x 6'5" (102cm x 196cm); **\$1,500-2,500**

353. West Persian Kurd Rug; Persia, late 19th c, uneven pile, damages; 5'1" x 7'8" (155cm x 234cm); **\$400-600**



353



354

354. Gashgai Rug; Persia, circa 1900, low areas, missing ends; 4'5" x 6'4" (135cm x 193cm); **\$600-900**

355. Lori Rug; Persia, circa 1900, crease wear; 4'8" x 13'1" (142cm x 399cm); **\$800-1,200**

356. Afshar Rug; Persia, circa 1900, areas of wear, oxidized browns; 4'7" x 5'6" (140cm x 168cm); **\$400-600**

357. Serab Runner Rug; Persia, early 20th c, good overall pile, original ends; 3'2" x 10'10" (97cm x 330cm); **\$800-1,200**

358. Small Agra Carpet; India, late 19th c, stain; 4'1" x 6'8" (124cm x 203cm); **\$1,500-2,000**

359. Afshar Rug; Persia, late 19th c, oxidized browns, small hole; 4'7" x 6'7" (140cm x 201cm); **\$600-800**



355



356



357



358



359



360



361



362



363



364



365



366



367



368



369



370



371



372

360. Serab Rug; Persia, late 19th c, camel ground field, floating medallion, good overall pile; 4'7" x 5'6"; **\$600-900**

361. Khorassan Kurd Rug; Persia, circa 1900, old repairs, good overall pile; 5'6" x 6'2" (168cm x 188cm); **\$800-1,200**

362. Afshar Rug; Persia, late 19th c, low areas, oxidized browns; 4'3" x 5'9"; **\$1,000-1,500**

363. Mahal Corridor Carpet; Persia, circa 1900, good overall pile; 4'10" x 10'4" (147cm x 315cm); **\$1,000-1,500**

364. Fine Karadja Serapi; Persia, circa 1900, good overall condition, ends missing a few knot rows; 4'7" x 6'2" (140cm x 188cm); **\$3,000-4,000**

365. Heriz Carpet; Persia, circa 1900, all over low pile, old repairs; 7'2" x 11'5" (218cm x 348cm); **\$2,500-3,500**

366. Zeigler Mahal Carpet; Persia, circa 1900, good overall condition; 6'0" x 6'11" (183cm x 211cm); **\$2,000-3,000**

367. Fine Tebriz Rug; West Persia, late 19th c, supple handle, areas of minor wear; 5'5" x 9'5" (165cm x 287cm); **\$4,000-6,000**

368. Fine Silk Kashan Carpet; Persia, circa 1900, full pile, excellent condition; 4'4" x 6'8" (132cm x 203cm); **\$4,000-6,000**

369. Silk Keshan Mat; Persia, circa 1900, worn, dry; 2'1" x 2'6" (64cm x 76cm); **\$200-300**

370. Lavar Kirman Carpet; Persia, circa 1900, good overall pile, supple handle; 4'3" x 5'0" (130cm x 152cm); **\$1,500-2,000**

371. Fine Hadji Jalil Tebriz Rug; Persia, circa 1900, fraying selvedge, good pile; 2'0" x 2'8" (61cm x 81cm); **\$1,000-1,500**

372. Fine Hadji Jalil Tebriz Rug; Persia, circa 1900, excellent condition, full pile; 4'1" x 5'11" (124cm x 180cm); **\$4,000-6,000**

373. Sarouk Ferahan Carpet; Persia, circa 1900, low overall condition; 8'9" x 12'2" (267cm x 371cm); **\$2,000-3,000**



373

374. Tebriz Carpet; Persia, circa 1900, overall pattern, good condition, areas of minor wear. Prov: F J Hakimian, New York (label on back) 11'3"x17'5" (344cmx535cm); **\$4,000-6,000**



374

375. Ushak Carpet; Turkey, circa 1890, light fading at one end, stains, cobbled bell hole; 12'x18' (365cm x 548cm); **\$6,000-8,000**



375



376

376. Sultanabad Carpet; Persia, circa 1900, areas of extensive wear, missing pile. Prov: Princeton University, Princeton, NJ; 14'7"x21'9" (432cmx667cm); **\$1,500-2,500**

377. Heriz Carpet; Persia, circa 1900, overall design, areas of wear, missing ends; 8'10" x 10'10". (270cmx332cm); **\$1,500-2,000**



377



378

378. Kashan Carpet; Persia, early 20th c, areas of minor wear, inscriptions in border; 9'x12' (274cmx365cm); **\$1,500-2,000**

379. Mahal Carpet; Persia, early 20th c, red field with navy border, evenly low; 8'7"x11'11" (265cmx362cm); **\$1,000-1,500**



379



380

380. Khorasan Carpet; Persia, circa 1900, deep navy field with birds; 12'6"x16'2" (381cmx490cm); **\$1,500-2,000**

381. Bidjar Carpet; Persia, circa 1900, wool warp, red field with floating medallion, overall low; 13'x 19'7" (396cmx594cm); **\$4,000-6,000**



381



382

382. Classical Ushak Carpet; Turkey, circa 1800, extensive reweaves and old repairs; 7'9"x13'7" (237cmx412cm); **\$1,000-2,000**

383. Sarouk Carpet; Persia, circa 1910, signed Gazhan. Scattered low areas accentuated by uneven "American paint". Applied fringe; 11'10" x 22'; **\$3,000-5,000**



383



384

384. Deco Chinese Carpet; China, circa 1940, full pile, light sculpting, small stains/furniture marks; 11'10" x 14'; **\$600-800**

Terms and Conditions of Sale

The property offered and sold through New Material Culture, Inc.'s (hereinafter MC) public auctions (hereinafter the Property) shall be offered and sold pursuant to the terms and conditions set forth below (hereinafter the Agreement). This Agreement constitutes the complete statement of the terms and conditions pursuant to which all Property is offered for sale. By bidding at the auction, whether in person, by agent, in writing, by telephone, internet bid or any other means, the buyer of the Property (hereinafter the Buyer) agrees to be bound by this Agreement.

PROPERTY SOLD AS IS. All Property is sold as is, where is, with all faults. Neither MC nor any consignor makes any guarantees, warranties or representations, expressed or implied with respect to the Property or the correctness of the catalogue or any other description of the Property. In no event shall MC or the consignor be responsible for the correctness, nor be deemed to have made any representation or warranty, of description, genuineness, authorship, attribution, provenance, period, culture, source, origin or condition of the Property. No statement made at the sale, or in the bill of sale, or invoice or elsewhere shall be deemed such a guarantee, warranty or representation.

WITHDRAWAL OF PROPERTY. MC reserves the right to withdraw any Property at any time for any reason and to default any sale in the event of an error or dispute.

COPYRIGHT AND REPRODUCTION RIGHTS. MC and its consignors make no warranty or representation, express or implied, that the Buyer will acquire any copyright or reproduction rights to any Property sold. MC expressly reserves the right to reproduce any image of the Property sold in the catalogue. The copyright in all images, illustrations and written material produced by or for MC relating to Property, including the contents of the catalogue, is, and shall remain at all times, the property of MC and shall not be used by the Buyer, nor by anyone else, without MC's prior written consent.

EXAMINATION OF PROPERTY. All Property is available for examination prior to bidding. The Buyer's bidding signifies that the Buyer has examined the Property as fully as desired or has chosen not to examine the Property. MC recommends that prospective bidders examine all items in which they have an interest prior to bidding.

BIDDING.

RESERVES. Some of the Property in the sale is offered subject to a reserve. The reserve is a confidential minimum price agreed upon by the consignor and MC below which the lot will not be sold. In most cases, the reserve will be set below the estimated range, but in no case will it exceed the estimates listed. If Property is offered with a reserve price the bidding will begin at that price. Otherwise, bidding will begin at a price appropriate in the auctioneer's discretion. The auctioneer always reserves the right to withdraw Property for any reason he deems appropriate. At the auctioneer's discretion, no bid of less than one half the low estimate will be accepted from any source, including but not limited to: phone bidding, absentee bidding, internet bidding or bidding in person at the auction.

ORDER OF BIDS. Unless otherwise announced by the auctioneer, all bids are per lot as numbered in the catalogue. MC reserves the right to determine any and all matters regarding the order, precedence or appropriate increment of bids or the constitution of lots.

ABSENTEE AND PHONE BIDDING. Absentee and phone bidding are permitted by prospective bidders who cannot be present at the auction. Please complete the Absentee Bid and/or Phone Reservation form. Absentee bids are executed competitively and confidentially. All reservations for phone bidding are held in the strictest confidence and must be received by 5 pm EST the day before the auction. No additional phone bids will be accepted at such time including additions when speaking with a staff person on the phone. Written absentee bids may be submitted on the Absentee Bid Form up to 30 lots before the item comes up for auction. Leaving an absentee or phone bid on a lot indicates your willingness to open the bidding at one half the printed estimate, and gives the auctioneer the authority to open the bidding at that level, or to open the bidding on a lot with a printed reserve at the reserve price.

In the case of identical absentee bids, the bid received first will prevail. Bids left on liveauctioneers.com are not executed until the item is offered in the live auction and the order in which they are received is not a factor.

CUT BIDS. We do not accept cut bids, (bids less than the last interval) from the floor or from absentee bidders including phone and internet bidders. Thus, it is possible that a lot could go to another bidder for less than an absentee bid. For example, if the bids are progressing in \$10 dollar increments and an absentee falls at a \$5 increment we will not take the bid since it is less than the \$10 increment. Following are general guidelines for bidding increments:

\$0-\$500 \$25 increments

\$500-\$1,000 \$50 increments

\$1,000-\$3,000 \$100 increments

\$3,000-\$10,000 \$200 or \$500 increments

\$10,000-\$50,000 \$1,000, \$2,000 or \$5,000 increments

Above \$50,000 auctioneer's discretion

HIGHEST BIDDER. The highest bidder as determined by the auctioneer shall be the Buyer. In the case of a disputed bid, the auctioneer shall have sole discretion in determining the Buyer and may also, at his or her election, withdraw the Property or reoffer the Property for sale. The auctioneer shall have sole discretion to refuse any bid, or refuse to acknowledge any bidder. At such time as the auctioneer has declared Property sold to a given Buyer, said Buyer thereupon assumes full risk and responsibility for the Property, agrees to sign any requested confirmation of purchase, and agrees to pay the full price, plus Buyer's Premium, therefore or such part, upon such terms as MC may require.

PAYMENT. Payment must be made by cash, approved check, wire transfer, Mastercard or Visa credit cards. MC reserves the right to require bank checks for purchases over \$5,000. Personal checks will be acceptable only if credit has been established with MC or if a bank authorization has been received guaranteeing a personal check. MC reserves the right to hold Property purchased by personal check until the check has cleared the bank. Buyer agrees to pay MC a handling charge of \$25.00 for any check dishonored by the drawee. MC reserves the right to not issue a Buyer's number or to withhold merchandise if appropriate credit has not been established. Credit arrangements must be made by the Friday prior to the day of auction so bank statements can be verified. Any bidder that plans on spending in excess of \$100,000 should make arrangements with the MC accounting department at least five (5) days in advance of the sale, as a deposit may be required to participate.

All Property purchased must be paid for no later than 5 pm EST on the seventh business day following the sale. MC may impose, and the Buyer agrees to pay, a monthly interest charge of 1.5% of the purchase price of any Property not paid by the Buyer within thirty (30) days of the date of sale. MC reserves the right to rescind any sale of Property in the event payment is not received within thirty (30) days of sale.

BUYER'S PREMIUM. A Buyer's premium of 22% will be applied to the purchase price of all Property.

REMOVAL OF PROPERTY. All Property purchased must be removed from the premises within ten (10) business days of the auction. MC may impose, and the Buyer agrees to pay, a monthly storage charge of 1.5% of the purchase price of any Property or portion of Property not removed by the Buyer within ten (10) business days after the date of sale. No Property may be removed from MC's premises until the Buyer has paid in full the purchase price including Buyer's premium. MC shall have no liability for any damage to Property left on its premises after the auction. A defaulting Buyer will be deemed to have granted and assigned to MC a continuing security interest of first priority in any Property or money of, or owing to such Buyer in MC's possession, and MC may retain and apply such Property or money as collateral security for the obligations due to MC. MC shall have all of the rights accorded a secured party under the Pennsylvania Uniform Commercial Code.

PACKING AND SHIPPING. Buyer agrees that packing and shipping are done at the Buyer's risk and that Buyer will pay in advance all packing expenses, materials, carrier fees and insurance charges. Shipping is the sole responsibility of the Buyer. MC will have no liability for any loss or damage to shipped items. Upon request, MC will provide a list of shippers who deliver to destinations within the United States and overseas.

TAXES. All purchases are subject to Pennsylvania sales tax unless the Buyer possesses a Pennsylvania sales tax exemption number. Exemption numbers from other states are accepted in Pennsylvania if presented with a business card or letterhead. Dealers, museums, and other qualifying parties can apply for a Pennsylvania exemption number prior to the auction. Buyer is responsible for any and all tariffs, taxes and assessments that might be made on the Property. International Buyers are responsible for tariffs, taxes, or assessments of shipped items to the Buyer's country.

IMPORT/EXPORT RESTRICTIONS. Some property that is sold at auction can be subject to laws governing export from the United States, such as items that include material from some endangered species. Import restrictions from foreign countries are subject to these same governing laws. Granting of licensing for import or export of Property from local authorities is the sole responsibility of the Buyer. Denial or delay of licensing will not constitute cancellation or delay in payment for the total purchase price of said Property.

BUYER'S BREACH. If the Buyer breaches any of its obligations under this Agreement, including its obligation to pay in full the purchase price of all Property for which it is the highest successful bidder, MC may exercise all of its rights and remedies under the law including, without limitation, (a) cancelling the sale and applying any payments made by the Buyer to the damages caused by the Buyer's breach, and/or (b) offering at public auction, without reserve, any lot or item for which the Buyer has failed to pay in full the purchase price, holding the Buyer liable for any deficiency plus all costs of sale.

GOVERNING LAW. These conditions of sale shall be governed by the laws of the Commonwealth of Pennsylvania (excluding the laws applicable to conflicts or choice of law). The Buyer agrees that any suit for the enforcement of this Agreement may be brought, and any action against MC in connection with the transactions contemplated by this Agreement shall be brought, in the courts of the Commonwealth of Pennsylvania or any federal court sitting therein. The Buyer consents to the nonexclusive jurisdiction of such courts and waives objections that it may now or hereafter have to the venue of any such suit.

AMENDMENTS TO TERMS AND CONDITIONS. No claimed modification or amendment of this Agreement on the part of any party shall be deemed extant, enforceable or provable unless it is in writing that has been signed by the parties to this Agreement. No course of dealing and no delay or omission on the part of MC in exercising any right under this Agreement shall operate as a waiver of such right or any other right and waiver on any one or more occasions shall not be construed as a bar to or waiver of any right or remedy of MC on any future occasion.



Lot 37. Ming Carved Gilt Buddha